



Learning in ELP during
Autumn 1

Welcome parents and carers

Welcome

We are very excited about the year ahead and are looking forward to having your child at Winterbourne Nursery Enhanced Learning Provision

This is the beginning of your child's new educational journey and we looking forward to getting to know your child and working together with you.

We will have a Keeping in Touch termly to keep you all informed of the topics we are covering and giving you the opportunity to ask any questions you may have.

Our topic this term is: Things I can do



This is the over-arching theme for this term.

We use this theme to support teaching in other areas of the curriculum

We pay close attention to the children's interests and their developmental needs and next steps.

What will be taught within each area

Literacy

Communication and Language

Maths

Expressive Arts and Design

Physical Development

Understanding
the World

Personal, Social, Emotional
Development
PSED

Things I can do

Working together



This is the over-arching theme for this term.

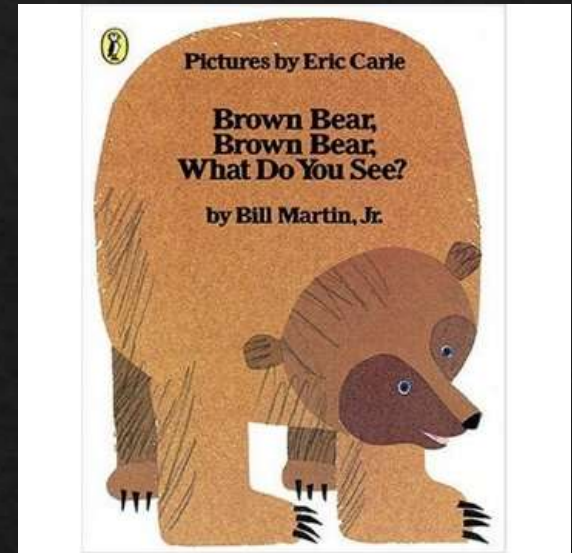
Literacy

Brown Bear, Brown Bear, What Do You See?

By Bill Martin

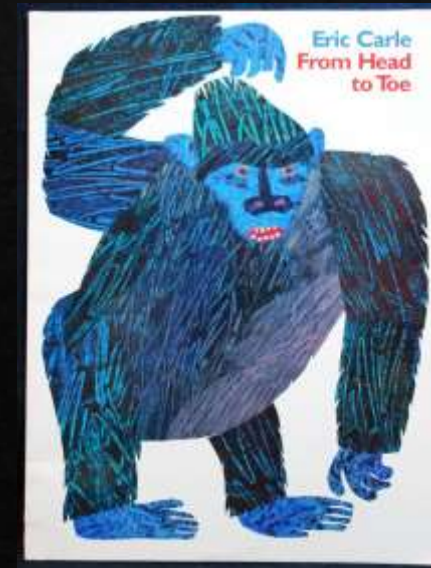
Focus: To listen to stories with increasing attention and recall.

To enjoy the story of Brown Bear, Brown Bear
Begin to fill in the words at the end of familiar lines
and to recognise different animals and colours.



Books: From Head to Toe
By Eric Carle

Focus: To describe main story settings, events
and principle characters beginning to be
aware of the way a story is structured



Literacy

At 'good morning' time, children and adults will be shown their picture name cards. Adults will model recognising their own card and will place it on the board.

Each child will be supported in recognising their card and placing it on the board. We will introduce Brown Bear, Brown Bear at circle time. All adults to join in with text and signing in Makaton.

Maths

All adults will model counting up to ten to introduce, 'tidy up' time.

Adult will count out crisps at snack time.

Number rhymes during free play and circle time.

Adults to model name and signing of colours during focus book 'Brown Bear' and to reinforce during colour focus Attention Builders.

Maths

Adults to model counting objects, children etc. and to write the corresponding numeral. This will be reinforced at every opportunity.

During Attention Building activities involving numbers and objects e.g. spooky spiders and sand shower using templates.

We will provide number displays and props for number rhymes.

Children will see writing numbers modelled during free play and during circle times where appropriate.

Expressive Arts and Design

Each child will be encouraged to explore various 'messy' activities at 'Group work' Adults will provide materials such as sand, dry rice, shaving foam and paint. adults will encourage exploration by modelling, using hands, fingers and simple tools such as paint brushes, combs styluses etc.

Adults will model singing and actions to songs and rhymes at circle time and during free play.

Your children will join the main nursery classes for a singing session once a week.

Understanding the World

All adults will use visual prompts and sung cues as well as Makaton signing to warn each child when an activity is coming to an end and what is going to happen next. We will use reduced consistent language.

We will support each child in moving to different areas of the nursery to complete various activities such as hanging up coat or apron, using the toilet, coming to circle/bucket time etc. all adults will use reduced consistent language to reinforce action.

Introduce white board, count up to ten and tidy up song. Adults will lead each child to 'tidy up table' and will support them by modelling activity or using 'hand over hand' support where needed.

Personal, Social, Emotional Development PSED

Children will be received by staff calmly and quietly using consistent, reduced language and visual prompts as they support each child in coming into class.

Your children will become familiar with the predictable routine and sung cues. These will be used throughout the morning to support children's understanding of their new environment.

Children will be encouraged to come to 'good morning time' where a song will be used to introduce all the children and adults daily.

Bucket Time has been introduced where we use using highly visual, exciting toys to encourage shared attention.

Turn taking drama games that involve moving around the classroom. Adult to model having a turn first and support children in moving from chair to having a turn and back again.

After circle time attention building activity, adult will introduce the group work activity by using the white board and then demonstrating the activity, including taking the lid off the box. The adult will then give a box to a second adult and say, "take it to the table". Second adult will do so and model removing lid and completing activity. Each child will then be given a box and told, "take it to the table". All adults will decrease the support as appropriate.

Adults will use Turn Taking Song at circle time and in free play indoors and outside to indicate the beginning and end of each turn. Children will take part in fast moving adult led activity such a 'Marble Run' and click clack.

Communication and Language

Adults will engage individual children in simple games such as blowing bubbles or making a car race across the floor. Adults will pause before blowing bubbles or releasing the car in order to encourage eye contact.

Some equipment will be placed out of reach but in view to encourage communication.

Adult will name item or action as she gives it to the child.

Adult will offer two items (toys or snack) to a child. The child will be given time to make choice by naming, reaching or pointing.

We have Introduced your children to PECS (Picture Exchange Communication System)

Communication and Language

Introduce Skill School, involving 1 single task e.g. posting coins into jar/posting shapes into sorter/completing inset puzzle.

Adult to model first and then use hand over hand to prompt child to complete task.

Continue with whiteboards and visual prompts. Children will initially be given hand over hand support to use these. Support will be decreased as children become familiar with the routine.

Continue with Phase One of PECS.

Communication boards in classroom and outside areas for children to request equipment and play actions.

Physical Development

Each child will be encouraged to explore the climbing apparatus and outdoor equipment in all outside areas. We will offer support where it is needed and will model how to use the equipment safely.

Children will be offered different mark making activities including, white boards and pens, salt tray, paint and brush, shaving foam etc. Adults will model mark making where appropriate.

Children will be encouraged to have a go at putting arms in sleeves and pulling up zips.

Children will be provided with opportunities to remove lids from boxes, turn, press and slide switches. Use loop in coat to hang on peg.

Children will participate in different drama games such as throwing bean bags or hoop on stick,

The importance of reading regularly

Reading for pleasure

Developing Confidence

Supporting writing skills

Special time

The books we are reading this term are Brown Bear, Brown Bear What Do You See? and From Head To Toe. You can purchase these from [Amazon.co.uk](https://www.amazon.co.uk) to read along with your child.

**The more that you read,
The more things you will know.
The more that you learn,
The more places you'll go.
-Dr. Seuss**

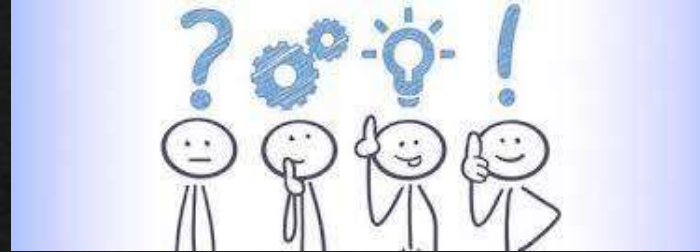
Green contact book.

In your child's school bag there is a green contact book.

In this book you will find a newsletter every Monday giving a brief summary of what we will be covering in the coming week.

This contact book is also for you to write to us. If your child has had a bad night's sleep, let us know, if they have not had breakfast, let us know, let us know what you all got up to over the weekend. If your child did something amazing let us know.

Questions or queries?



You are still able to email your child's class teacher directly.

elp.teachers@winterbourne-inf.croydon.sch.uk