

Monday 19th February 2024

WOW DAY

Let's have a parade in the hall!





LQ: Can I engage in memorable experiences?



Steps to success

- I can share my ideas.
- I can talk about what explore means.
- I can talk about insects and natural materials.

Star Words



parade



insects/ minibeasts



face paint



nature/ woodland



This half term our new topic is called:



Today is our WOW Day and we will be doing lots of exploration activities.

TP: What does explore mean?

Explore means to look at (something) in a careful way to learn more about it



LQ: Can I engage in memorable experiences?

What do you think you might find in
this woodland?



TP: I think that I will find
_____ in this woodland.

LQ: Can I engage in memorable experiences?

Here are some animals and natural materials that might live in these woodlands.

black
woodlouse



oblong
pebbles



slimy
slug



beautiful
butterflies



spotty
ladybird



long
dragonfly



tall, green
tree



TP: Can you describe the **natural materials and insects** using adjectives?

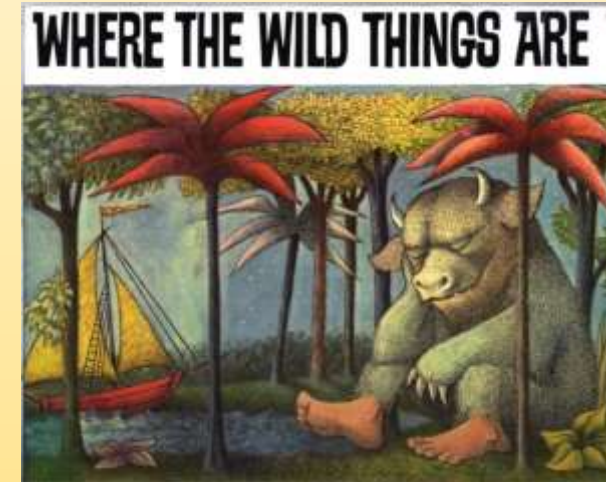
LQ: Can I engage in memorable experiences?

What insects and natural materials
can you spot in 'The Gruffalo'
story?



<https://www.bbc.co.uk/iplayer/episode/b00pk64x/the-gruffalo>

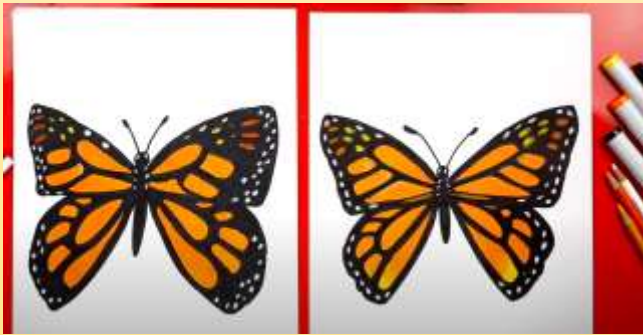
We will be focusing on the story
'Where The Wild Things Are'.
What insects and natural materials
can you spot



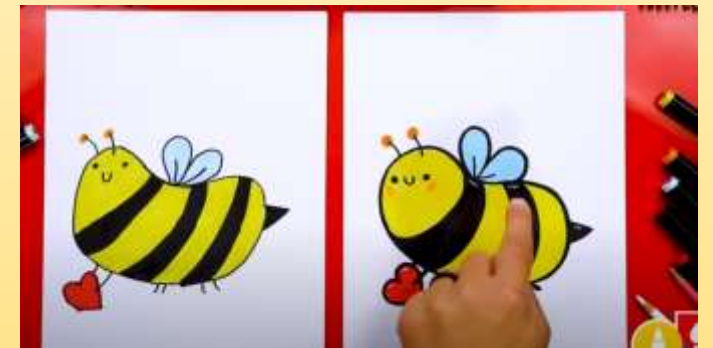
<https://www.youtube.com/watch?v=ALmNPxNehYE>

Lets draw! Pick a clip to watch.

<https://www.youtube.com/watch?v=88K3ytkQlek>



<https://www.youtube.com/watch?v=NLWNOafqfh0>



<https://www.youtube.com/watch?v=KXnW7t1-Vq0>

Charades

Think of a insect and
pretend to be it.



Stem: I think he/she is a ____.

LQ: Can I engage in memorable experiences?

Monday 19th February 2024

Leaf printing

You will need:

- Paper
- Paint
- Paintbrush
- leaves

Collect leaves from the playground and describe the colour, shape and size of it. We will then explore prints using the leaves and paint colours.

TP: This leaf is _____.



LQ: Can I engage in memorable experiences?

Bug hunt



Let's visit the secret garden and explore using magnifying glasses and observation skills.

TP: What do you think you will find in the secret garden?

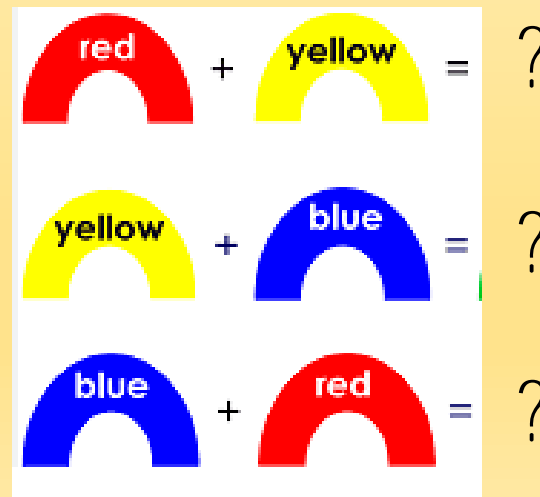
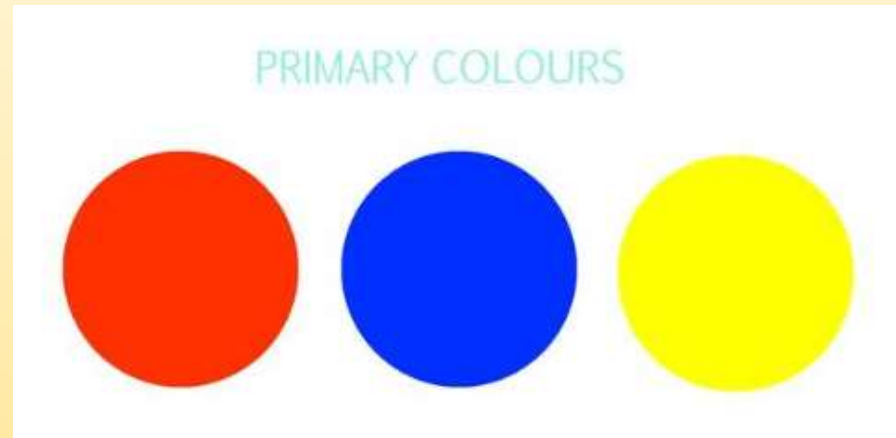


Stem: I think I will find _____.

Colour mixing

Choose two primary colours to make a secondary colour.

TP: What two colours are you going to choose?



LQ: Can I engage in memorable experiences?

Minibeasts videos

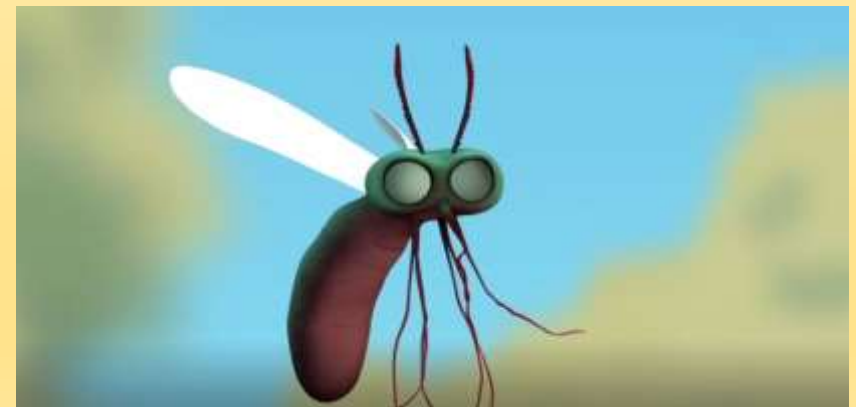
What did you find out?

Stem: I found out that

_____.



<https://www.bbc.co.uk/bitesize/articles/zbwvhcw>



<https://www.bbc.co.uk/bitesize/articles/z7jcbqt>

Tuesday 20th February 2024

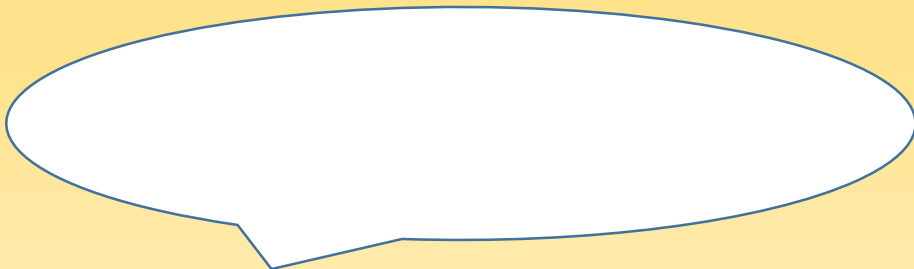
dazzled

To shine brightly and sparkle.

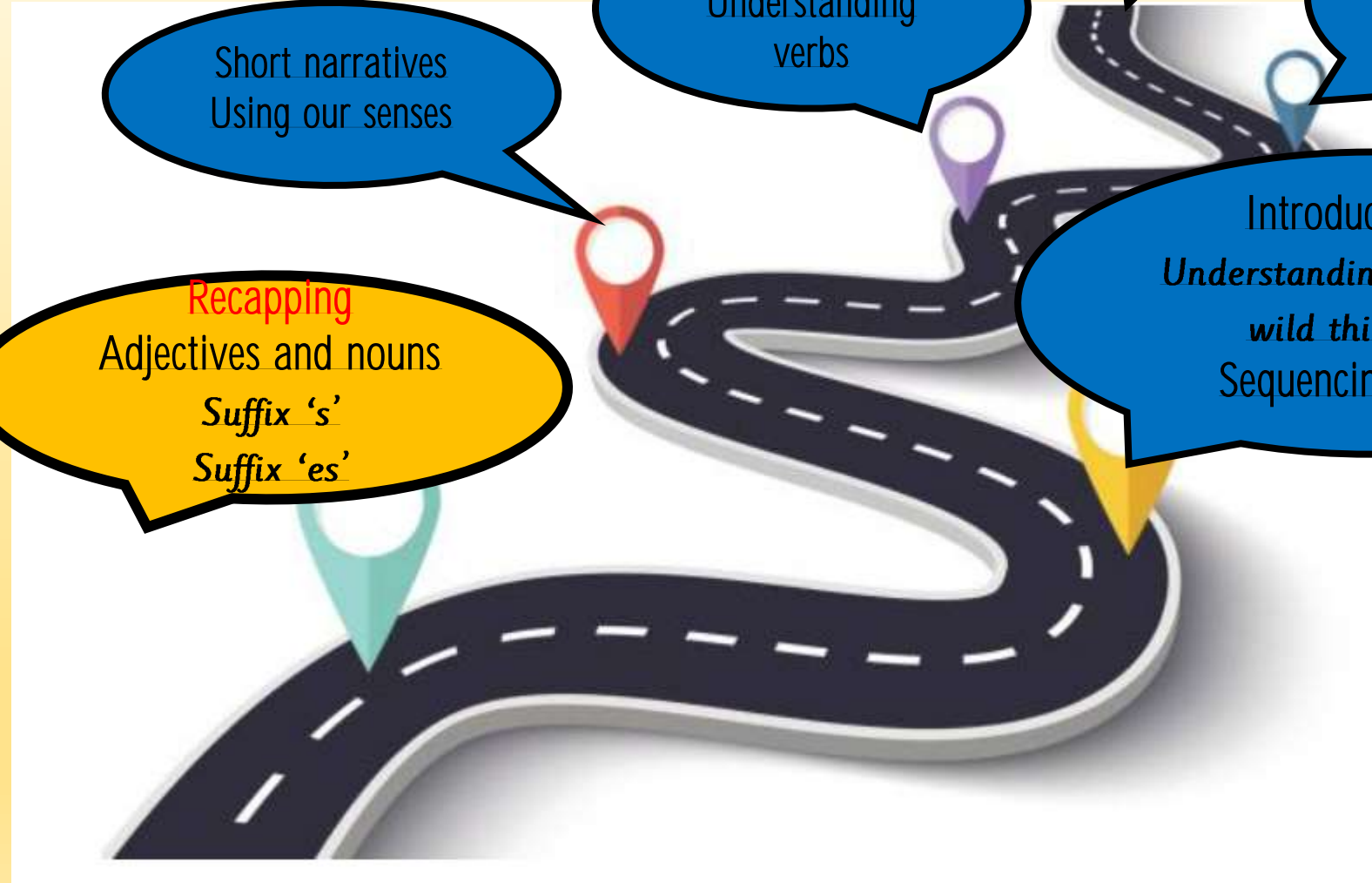
Sentence

"The boy was dazzled by the sun."

TPs- Can you use it in a sentence?



Our English Learning Journey



Key vocabulary:

Adjectives and noun
Suffix 's' and 'es'
Setting description
Mischievous
Imagination
wild
Forest
Woodlands
Adjectives
Verbs

Recapping
Adjectives and nouns
Suffix 's'
Suffix 'es'

Short narratives
Using our senses

Using adjectives
Understanding
verbs

Edit
publish

Relate to the character
Shared write
Writing a short
narrative

Introduce genre
Understanding 'Where the
wild things are'
Sequencing a story



LQ: Can I use nouns and adjectives in a sentence.



Steps to success

- I can use an noun.
- I can use an adjective.
- I can write a sentence.

Star Words

noun



write



adjectives



Recap

TP: What is a noun?

Person



Place



Thing



Animal



TP: Can you use a noun in a sentence using
the conjunction 'and'.

Recap

TP: What is an adjective?

An adjective **describes** the noun.

Old, happy



Colorful, busy



Shiny, hot



Sly, orange



TP: Can you think of an adjective to describe nouns

Adjectives

TP: What nouns did you spot?

How did they describe the nouns?



<https://www.youtube.com/watch?v=kVTjug9uaP4>

The boy has pink hair and a black coat.

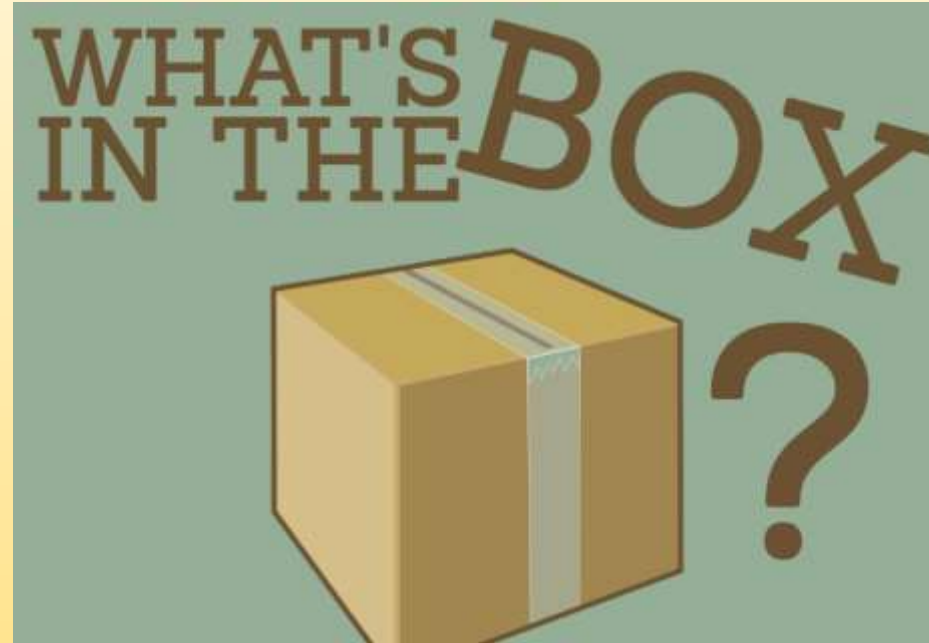
Spot the nouns and adjectives.

What's in the box!

I have hidden objects in the box. They are all nouns (things) can you use adjectives to describe the nouns.

Smooth, cold, spikey,
soft, hard, fluffy.

TP: It feels_____.



Task

Use your whiteboards to write sentences using adjectives to describe nouns. Challenge yourself by using the conjunction to describe the nouns more than one way.

Self Assessment

Do you understand what you have to do?



LQ: I can use nouns and adjectives in a sentence.

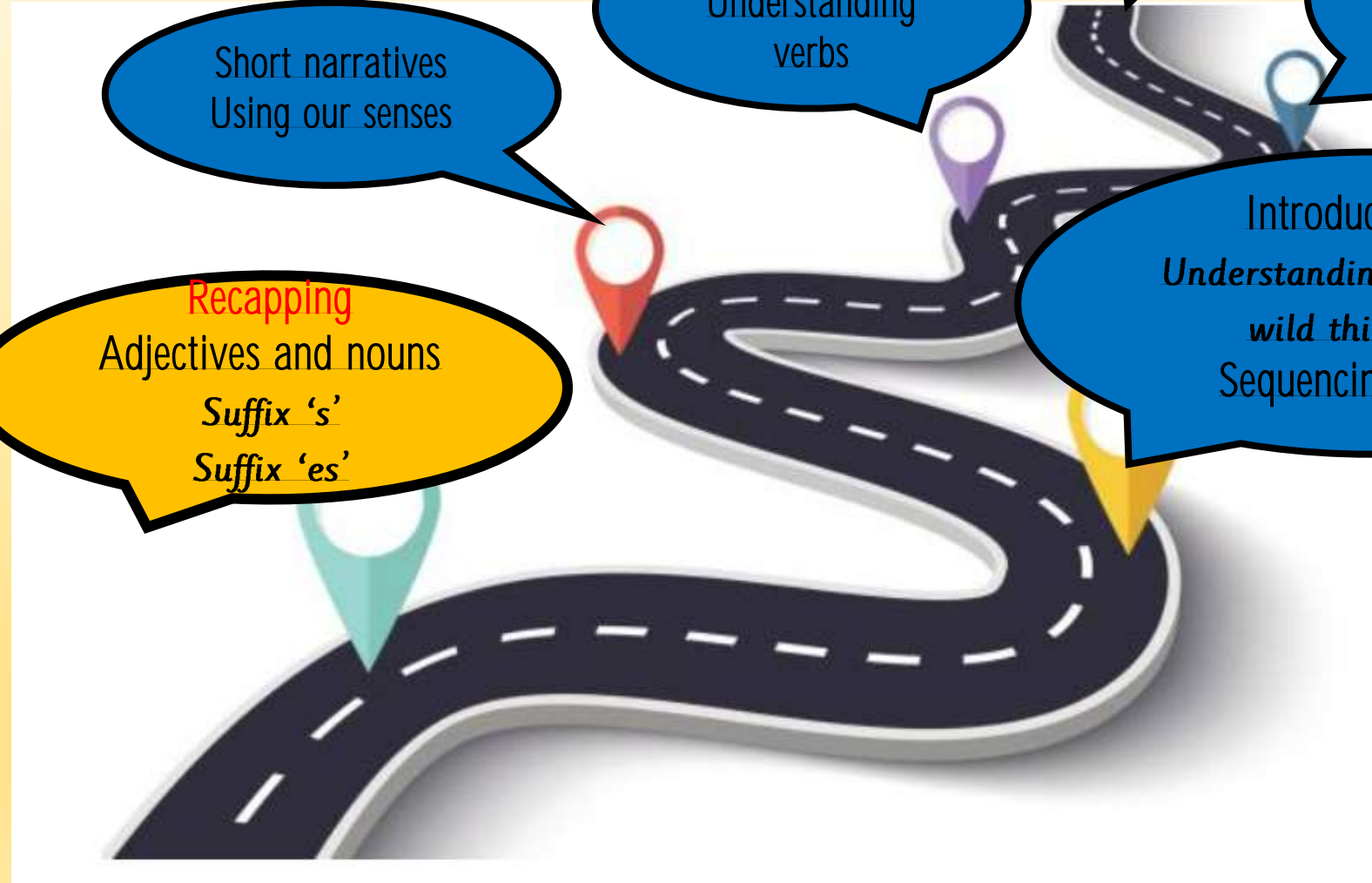
Tuesday 20th February 2024

Task



Wednesday 21st February 2024

Our English Learning Journey



Short narratives
Using our senses

Using adjectives
Understanding
verbs

Edit
publish

Relate to the character
Shared write
Writing a short
narrative

Introduce genre
*Understanding 'Where the
wild things are'*
Sequencing a story

Recapping
Adjectives and nouns
Suffix 's'
Suffix 'es'

Key vocabulary:

Adjectives and noun
Suffix 's' and 'es'
Setting description
Mischievous
Imagination
wild
Forest
Woodlands
Adjectives
Verbs



LQ: Can I add the suffix 's'?



Steps to success

- I can decode words.
- *I can add the suffix 's' at the end of the word.*
- I can read the new word.

What is a suffix?



<https://www.youtube.com/watch?v=duZ-eu0aI7E>

A **suffix** is a word ending that is added to the **end** of a root word. It changes the word and makes it **plural** (more than one).

What is a plural?

Plural means 'more than one'.



TP: To make the word plural we add an _____.

Singular = 1		Plural = more than 1
One dog	→	Lots of dogs
One door	→	Lots of doors
One pencil	→	Lots of pencils
One lamp	→	Lots of lamps

Add the suffix 's'

TP: The plural is_____.

A desk



3 desks



Add the suffix 's'

TP: The plural is_____.

A train



Two trains



Add the suffix 's'

TP: The plural is_____.

A pen



Lots of pens



LQ can I add the suffix 's'?

Wednesday 21st February 2024

Root word

Suffix

dogs



TP: The **root word** is _____.

TP: The **suffix** is _____.

There is a rule!

Wednesday 21st February 2024

If the word ends with one of these sounds we cannot add an 's' we have to add an 'es'.

sh

ch

ss

s

x

z

LQ can I add the suffix 's'?

Wednesday 21st February 2024

Which words do we add
the suffix 's'?

train

book

bench

Remember the rule!

TP: We add the suffix 's' to _____.

sh

ch

ss

s

x

z

LQ can I add the suffix 's'?

Wednesday 21st February 2024

Which words do we add
the suffix 's'?

box

cat

desk

Remember the rule!

sh

ch

ss

s

x

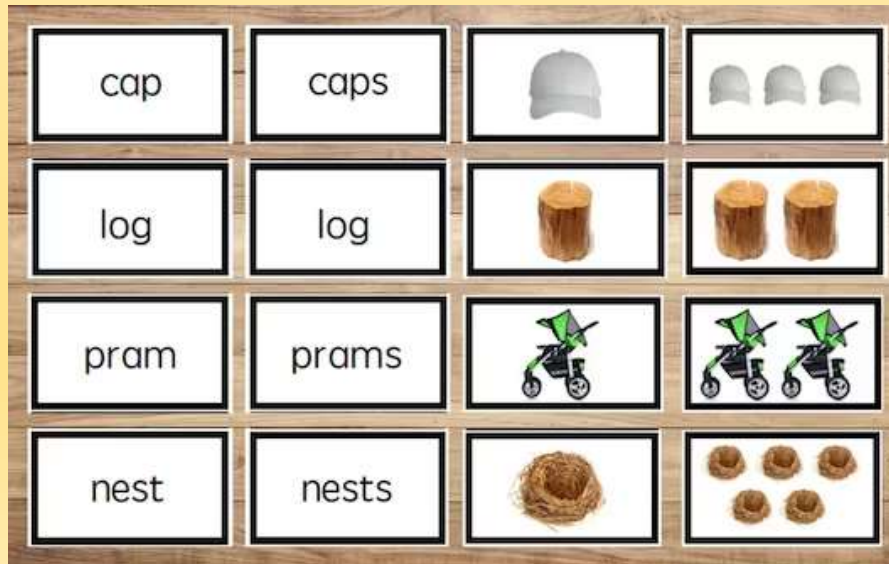
z

TP: We add the suffix 's' to _____.

Task

<u>singular</u>	<u>plural</u>
boy	boys
hands	hand

Today we will pick a picture card and write the root word in our book. We will then re-write the word adding the suffix 's' at the end making it a plural.



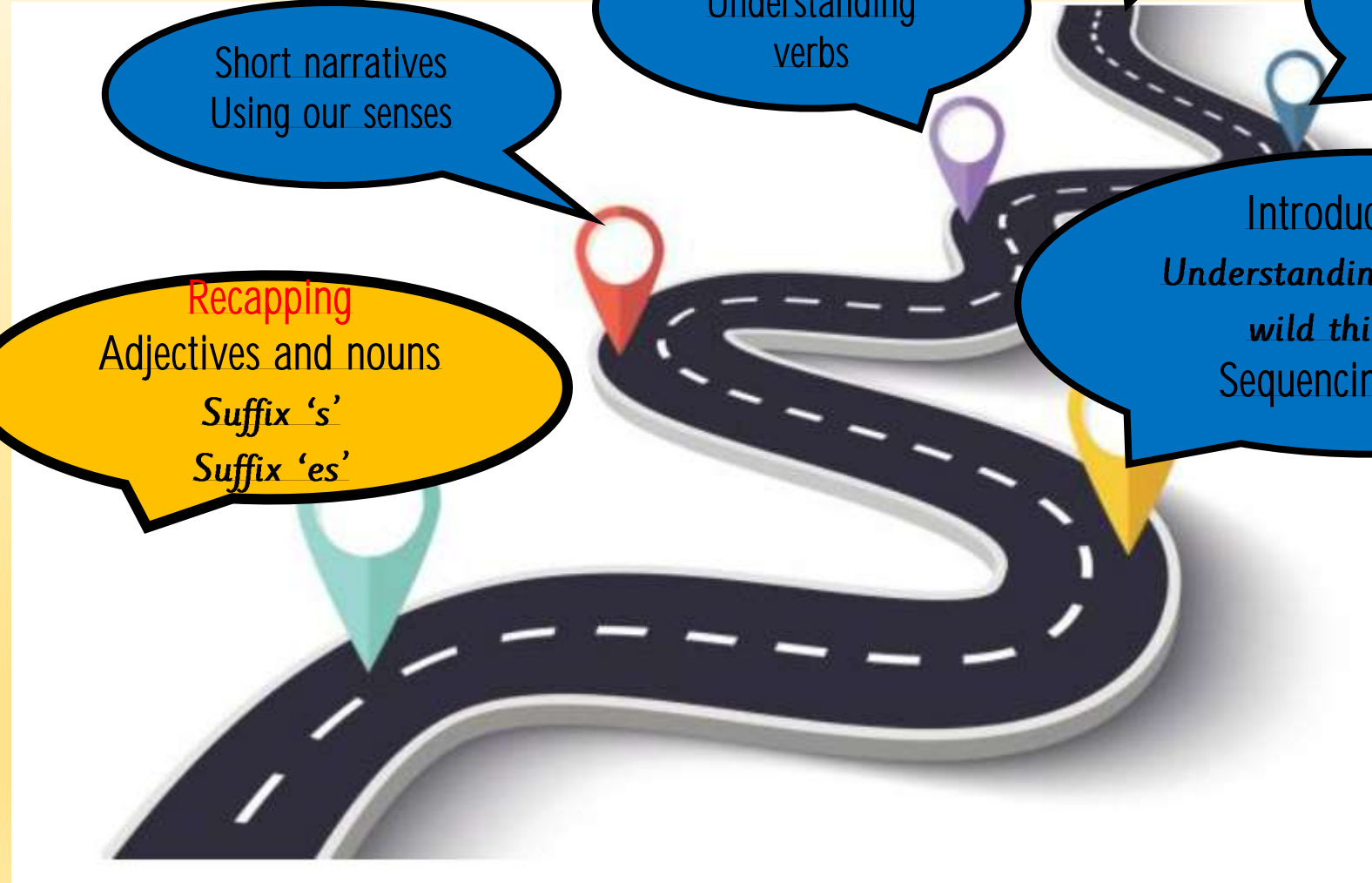
Self Assessment

Do you understand what you have to do?



Thursday 22nd February 2024

Our English Learning Journey



Key vocabulary:

Adjectives and noun
Suffix 's' and 'es'
Setting description
Mischievous
Imagination
wild
Forest
Woodlands
Adjectives
Verbs

Short narratives
Using our senses

Using adjectives
Understanding
verbs

Edit
publish

Relate to the character
Shared write
Writing a short
narrative

Introduce genre
*Understanding 'Where the
wild things are'*
Sequencing a story

Recapping
Adjectives and nouns
Suffix 's'
Suffix 'es'



LQ: Can I add the suffix 'es'?



Steps to success

- I can decode words.
- *I can add the suffix 'es' at the end of the word.*
- I can read the new word.

Recap

What is a suffix?

A **suffix** is a word ending that is added to the **end** of a root word. It changes the word and makes it **plural** (more than one).

Which word is plural?

Pen

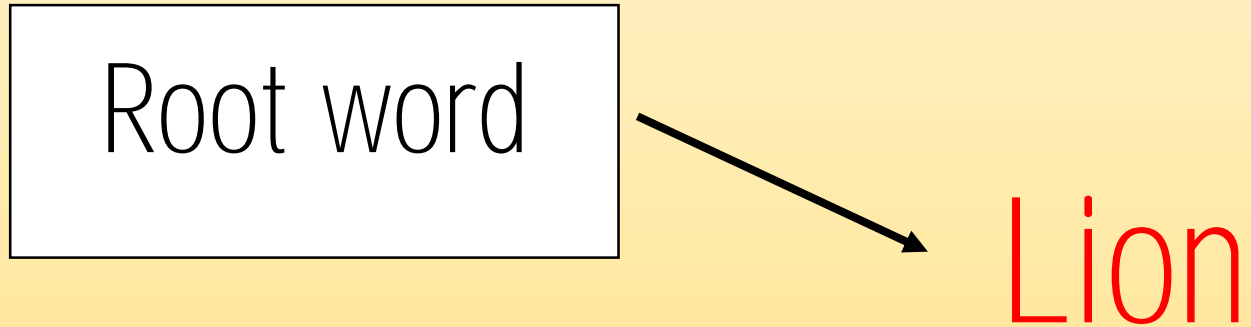
Pens

LQ can I add the suffix 'es'?

Thursday 22nd February 2024

Recap

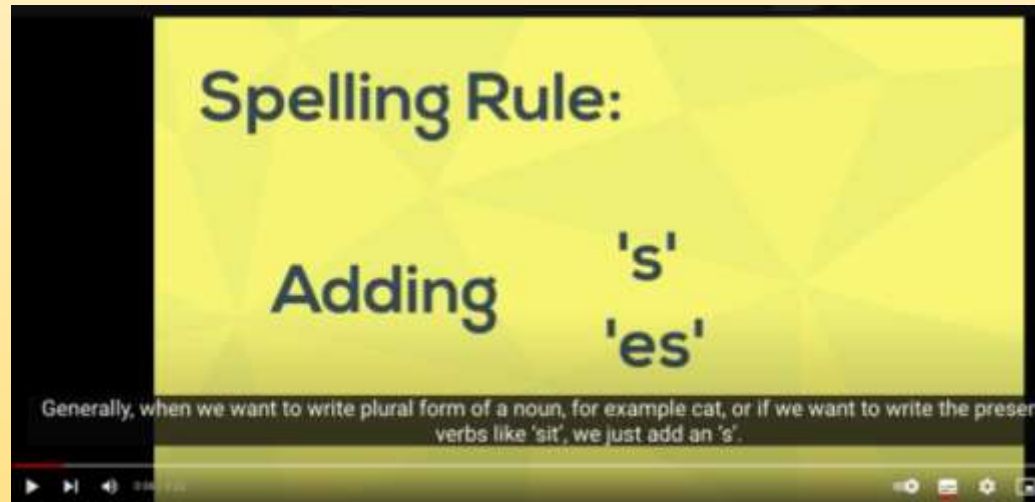
Where does the suffix go?



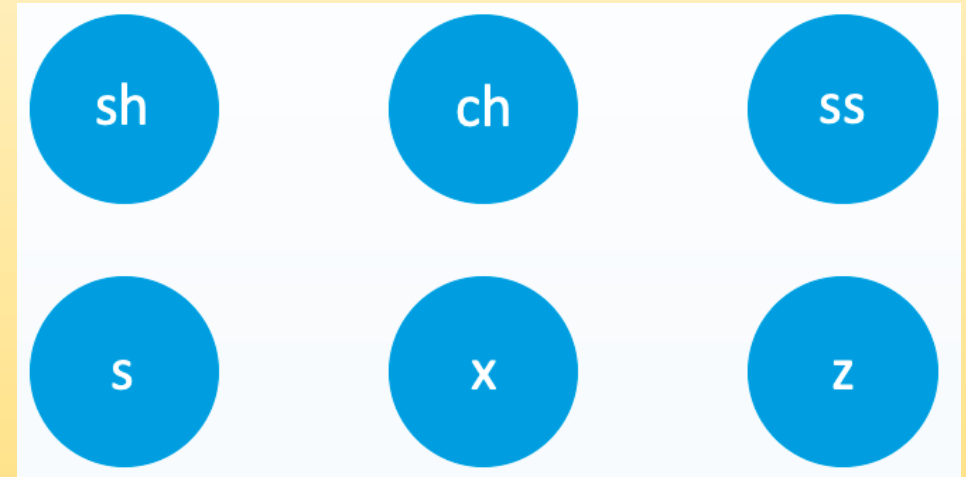
TP: The suffix goes at the _____ of the root word.

What is the spelling rule?

Which words can we not add the suffix 's' to?

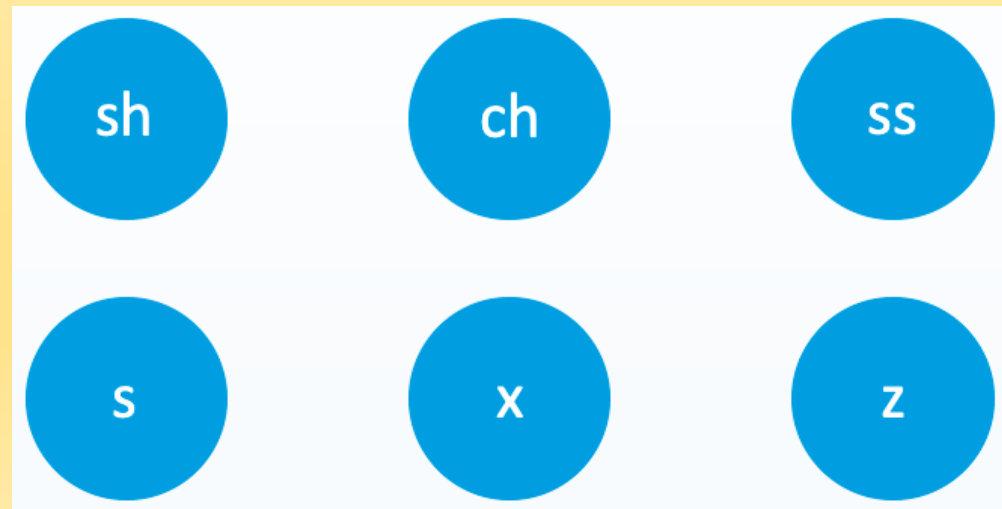


<https://www.youtube.com/watch?v=RhPubTi8GHQ>

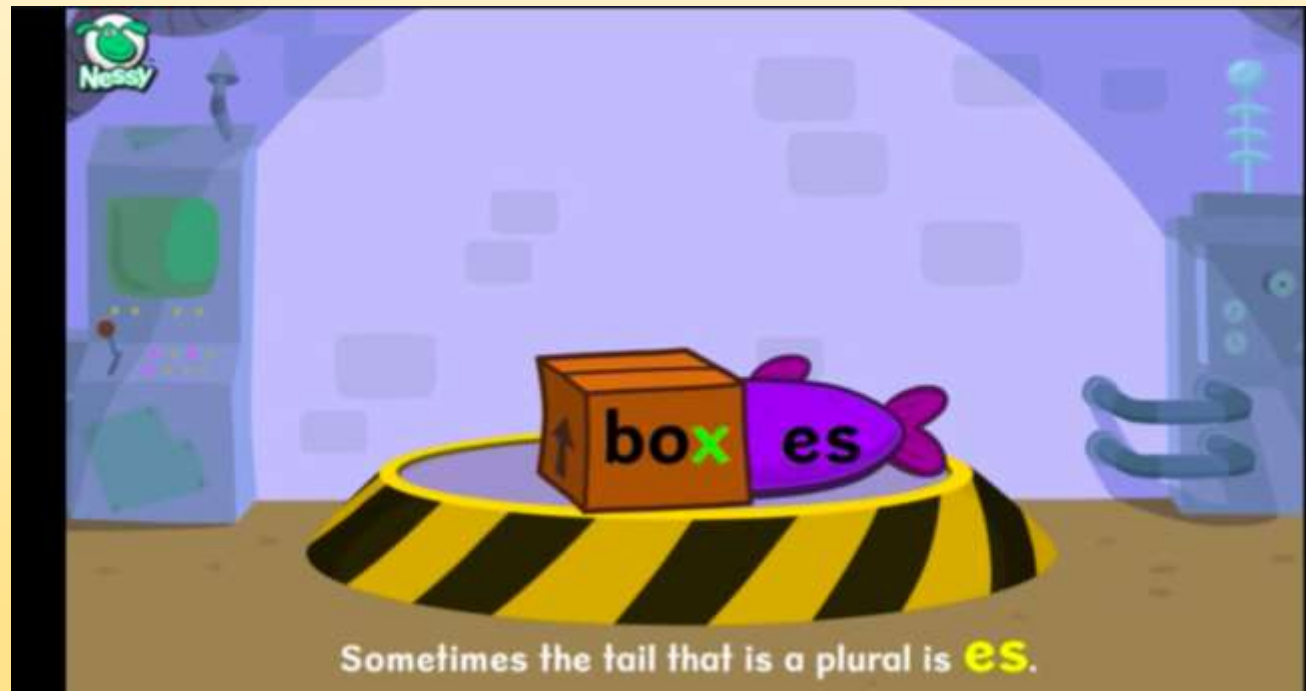


Yesterday we focused on adding the suffix 's'. Today we will learn how to use another suffix 'es'.

Can you remember when we can use the suffix es?



Suffix 'es'



<https://www.youtube.com/watch?v=ID1OaD4FBqM>

Add the suffix 'es'

TP: The plural is_____.

A church



Two churches



Add the suffix 'es'

TP: The plural is_____.

A brush



Lots of brush^{es}



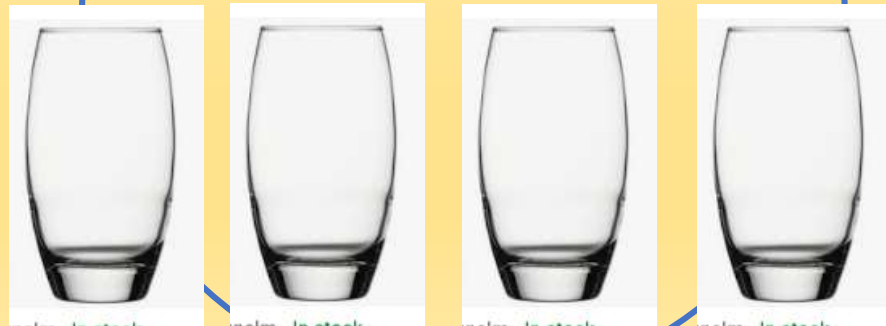
Add the suffix 'es'

TP: The plural is_____.

A glass



Four glasses



LQ Can I add the suffix 'es'?

Thursday 22nd February 2024

Which words do we add
the suffix 'es'?

bus

book

bench

Remember the rule!

TP: We add the suffix 'es' to _____.

sh

ch

ss

s

x

z

LQ Can I add the suffix 'es'?

Thursday 24th February 2023

Which words do we add
the suffix 'es'?

buss

buzz

shoe

Remember the rule!

TP: We add the suffix 'es' to _____.

sh

ch

ss

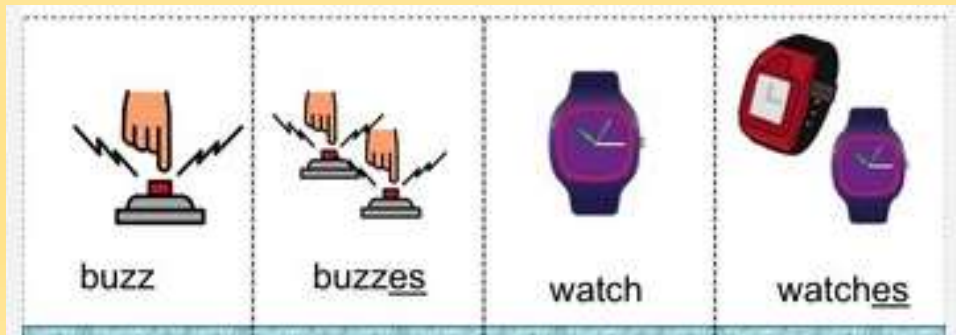
s

x

z

Task

Today we will pick a picture card and write the root word in our book. We will then re-write *the word adding the suffix 'es' at the end* making it a plural.



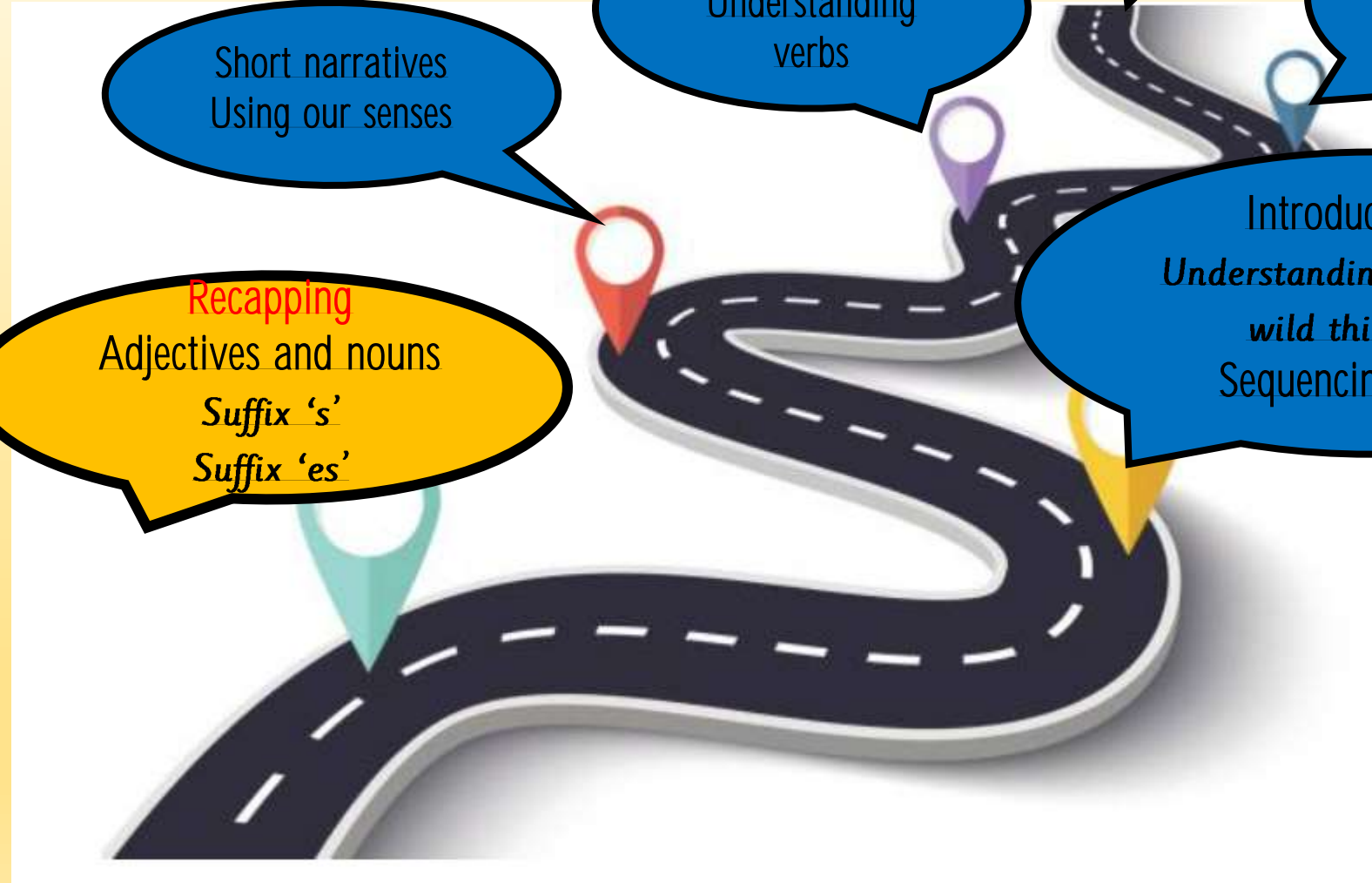
Self Assessment

Do you understand what you have to do?



Friday 23rd February 2024

Our English Learning Journey



Short narratives
Using our senses

Using adjectives
Understanding
verbs

Edit
publish

Relate to the character
Shared write
Writing a short
narrative

Introduce genre
*Understanding 'Where the
wild things are'*
Sequencing a story

Recapping
Adjectives and nouns
Suffix 's'
Suffix 'es'

Key vocabulary:

Adjectives and noun
Suffix 's' and 'es'
Setting description
Mischievous
Imagination
wild
Forest
Woodlands
Adjectives
Verbs



LQ: Can I write a sentence?



Steps to success

- I can remember what makes a good sentence.
- I can write a sentence.
- I can re-read my work.

Recap

What is a suffix?

A **suffix** is a word ending that is added to the **end** of a root word. It changes the word and makes it **plural** (more than one).

What suffixes have we learnt?

‘s’

‘es’

Finger spaces



Full stops



Capital letters

A B C

[illegible]

Is this a good sentence?



<https://www.bbc.co.uk/bitesize/articles/zsv64qt#z97fcxs>

Is this a good sentence?

iamhappytoday

I am happy today.

TP: It is a **good** sentence because _____.

TP: It is **not a good** sentence because _____.

Is this a good sentence?

The big black cat

The big black cat.

TP: It is a **good** sentence because _____.

TP: It is **not a good** sentence because _____.

Is this a good sentence?

The Tasty Chocolate cake.

The **t**asty **c**hocolate cake.

TP: It is a **good** sentence because _____.

TP: It is **not a good** sentence because _____.

Is this a good sentence?

There is a bee on my nose.

TP: It is a **good** sentence because _____.

TP: It is **not a good** sentence because _____.

Nicole says, this sentence is a good sentence. Do you agree?

I like to go to London Bridge with my brother Jess.

Task

Today we will create and write simple sentences remembering our must haves. Chose a picture and think of sentences to write.



Self Assessment

Do you understand what you have to do?

