

Winterbourne Nursery and Infant School
*Inspire – Learn -
Be Proud*

Welcome parents and carers

Year 2

Topics and coverage during the
Spring 2 half term.



Year 2 Topics

This is where we are right now.

Autumn 1	Autumn 2	Spring 1	Spring 2	Summer 1	Summer 2
					
Discovery and Determination	Hardworking Humans	Fire ! Fire !	Street Detectives	The sea, sand & the sun	Joyful journeys

Our current topic

Sand, Sea & Sun

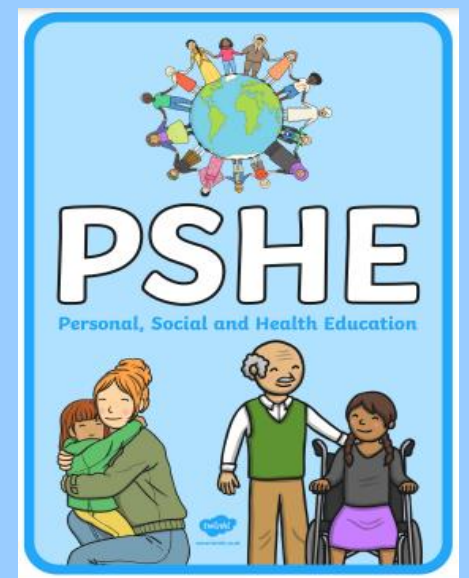
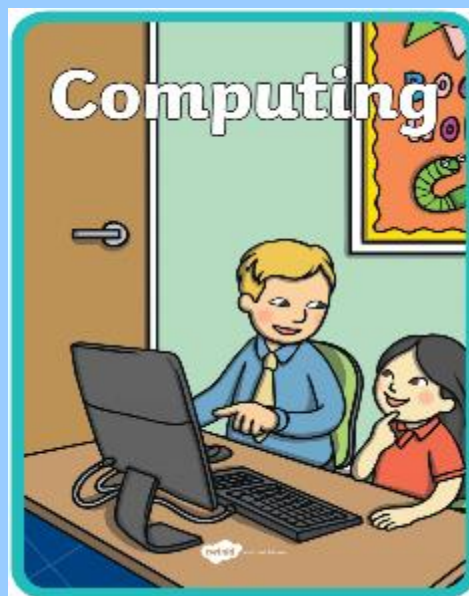
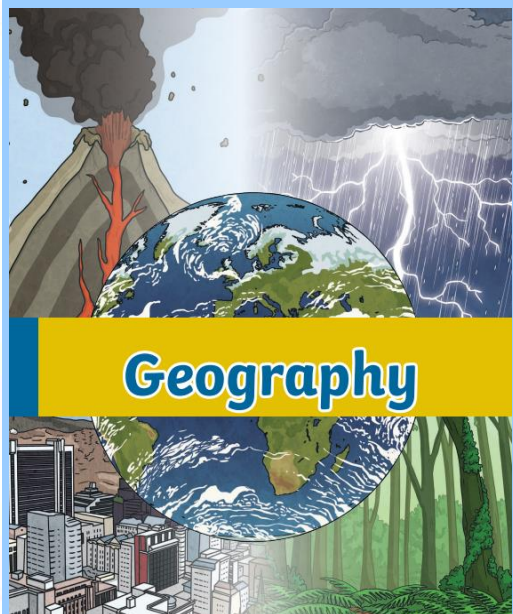
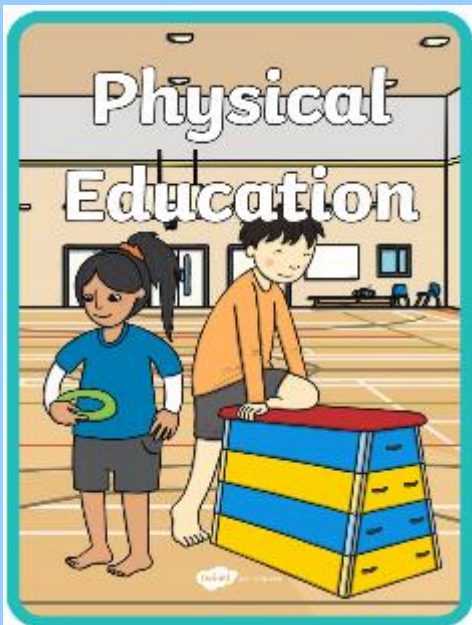
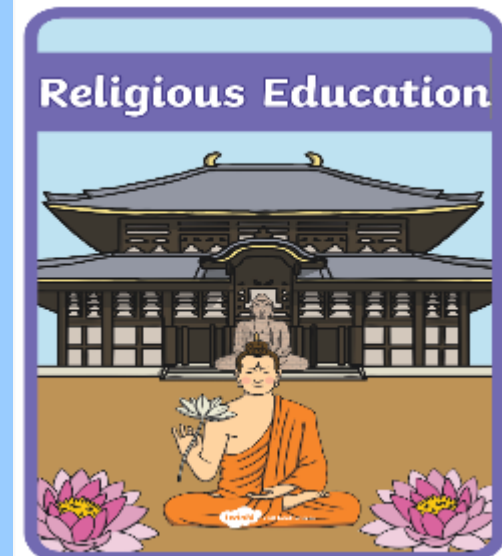
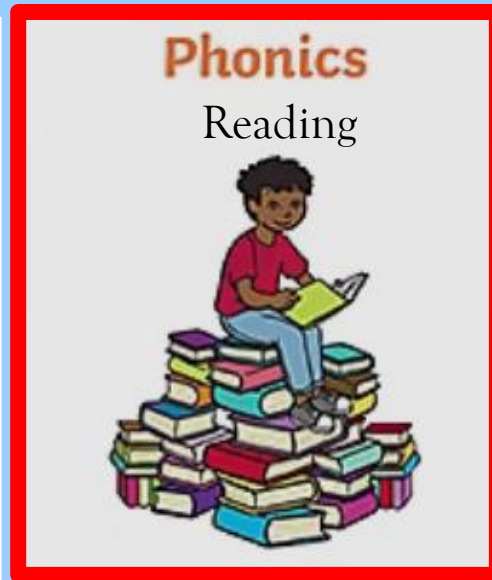
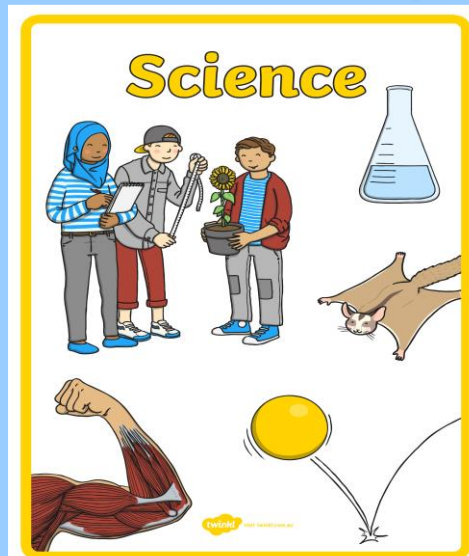
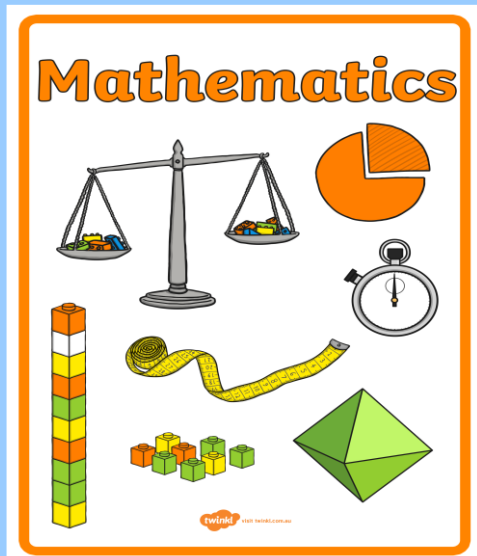
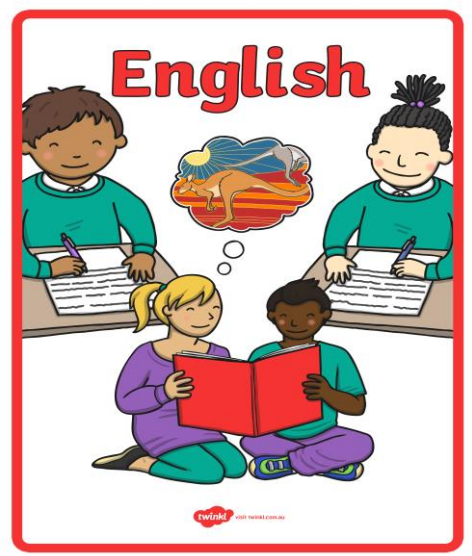


We use this topic to support teaching in all areas of the curriculum.

In this topic the children will:

- Discuss and explore human and physical features of local area and England (Geography).
- Observe and describe how seeds and bulbs growing into the plants. (Science).
- Design and create a greenhouse (DT).

This term these are the subjects that are taught within the school day



English

We will be writing long narrative.

The children will be recapping the features of S.T.O.R.Y. based on the beach setting, using time conjunctions, chronological order and expressing emotions, describing senses.

They will then publish their work from their teacher's feedback and self-editing to produce their final piece of long narrative.

This term we will continue to follow 'No nonsense spelling' and learning new strategies to spell more High frequency and Common exception words.

Our reading focus is using the text to find the answer to questions.

Sand, Sea & Sun
Long Narrative



Summer 1

Key Vocabulary

S.T.O.R.Y, adjectives, adverbs, commas, conjunctions, nouns, verbs, past tense, present tense, suffixes, prefixes, narrative, sentences, question, exclamation, command











No Nonsense
Spelling



Phonics

We follow the Little Wandle Letters and Sounds' programme. We are learning phase 5 sounds.

The children will continue learn the different letters that make one sound as well as the different sounds a group of letters can make.

 ai ay a a-e eigh aigh ey ea	 ee ea e e-e y ey	 igh ie i i-e y	 oa o o-e ou oe ow	 oo ue u-e ew ou ui
 or aw au aur oor	 ur er ir or	 ow ou	 oi oy	 ear ere eer

Maths

Fractions, Times

We will continue learning how to recognise, find, name and write fractions $\frac{1}{3}$, $\frac{1}{4}$, $\frac{2}{4}$, $\frac{3}{4}$ of a length, shape, set of objects or quantity, understanding that all parts must be equal.

We will choose and use appropriate standard units to estimate and measure capacity (litres/ml) to the nearest appropriate unit, use measuring vessels, compare and order volume/capacity and record the results using $>$, $<$ and $=$; tell and write the time to five minutes, including quarter past/to the hour and draw the hands on a clock face to show these times, know the number of minutes in an hour and the number of hours in a day.

Maths

Summer 1

This half term we will focus on:

Time: O'clock, half past, quarter past, quarter to

Volume

60 seconds = 1 minute

60 minutes = 1 hour

24 hours = 1 day

7 days = 1 week

365 days = 1 year

52 weeks = 1 year

10 years = 1 decade

100 years = 1 century

1000 years = 1 millennium



Key Vocabulary

Time: hands, face, hour, minute, analogue, o'clock, past, to, half past, quarter past, quarter to, quarter of an hour

Volume – volume, capacity, larger, largest, smaller, smallest, fills, holds, less, more, $>$, $<$, $=$, full, half, three-quarters, a quarter, identical, hold, millilitre, litre, scale

Science

Plants

Science

Plants



Summer 1

Key Vocabulary

Flower, stem, roots, seeds, healthy, light, bulbs, deciduous, evergreen, mature, experiment, predict, observe, plant, seeds, water, sunlight, soil, temperature, deciduous, evergreen, beans.

We will be exploring, observe and describe how seeds and bulbs grow into mature plants; find out, describe how plants need water, light and a suitable temperature to grow and stay healthy. Working scientifically: observing closely, using simple equipment, performing simple tests, using their observations and ideas to suggest answers to questions and gathering and recording data to help in answering questions.

Geography

Human and Physical Features



port

canal

Summer 1

Key Vocabulary

City, Country, beach, Town, cliff, Village, Coast, Sea, Ocean, Environment, Port, Physical features, Human features, Beach, Google Earth, Mountains, Hills.

Geography

Discuss human and physical features in their local area/ London.

Use Google Earth to explore the physical and human features of a contrasting non-European country.

Discuss similarities and differences between their local area/ London and a contrasting Non-European country.

Talk about how people can affect the local environment they live in.

Geography

Brighton

Explore and investigate

We are going to have a school trip to Brighton. We will explore human and physical features.





Greenhouses



Summer 1

Key Vocabulary

Greenhouse, Transparent, Growing, Plants, Glass,
Sturdy, Structure

DT

Greenhouse

This term the children will be learning how to design the green house and make it. We will be designing the green house for a real-life plants. It is related to Science topic 'Plants'.

RE

In R.E the children will learn:

What is important to people?

What a child needs to know and remember by the end of the unit:

- Describe how different religions worship.
- Know what worship can mean for different religions.




ALL: Talk about what many people think about what God is like.

MOST: Describe how religious people worship God at home and places of worship, compare to see what is the same.

SOME: Explain why people worship God. What is worship?

(Our school used the 'Croydon Agreed Syllabus' to support the teaching of RE)

Religious Education
Worship
Why is it important to people?



Five Pillars of Islam

Sabbath Prayers

Bible Reading

Year 2 - Spring 2

worship	praise	honour
God	Hymn	Deity

RE

Trip - Croydon Mosque and Islamic Centre

Trip dates:

May 7th





Physical Education (PE)

This half term the children will learn–Athletics

Children will learn:

To further develop hand eye coordination, gross motor skills and aim

To develop their understanding of sportsmanship and working as a team

To recognise what is successful

They will take part in relay races, sprints, press pushes, throwing and
jumping



Music



Children have a specialist teacher who will teach the child how notations and beats.

INDONESIAN GAMELAN

To look at the reasons why Gamelan music is played. To explore different instruments in the orchestra and create using team work.

Singing, Call and response, Listening, Baris - Gong Kebyar of Peliatan, Composing ,Whole class orchestra creation, Creating rhythms and holding rhythm as a group.

Computing

We follow Kapow Program

In computing we will be learning about animation.

An animation is a series of still images shown in quick succession to give the appearance of a moving image; just like an optical illusion.

We will be creating flip books after that we will use these skills to create animation.

★

STAR WORDS



animation



flipbook

frame



moving image

still image

zoetrope

thaumatrope



Personal, Social, Health Education (PSHE)

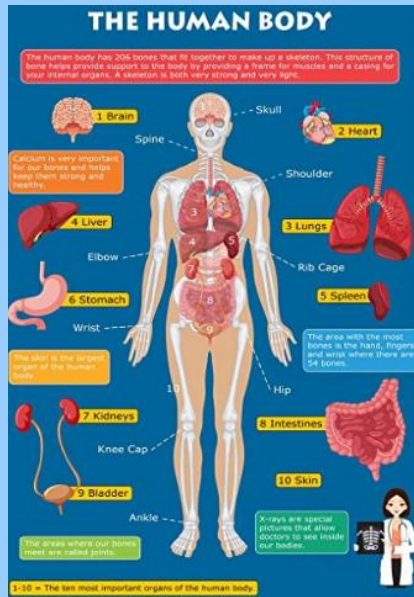


Healthy Me

This terms PSHE topic is all about healthy lifestyle choices.

The children will learn about having a balanced diet, the importance of staying physically active and to keep themselves and others safe.

The children will also discuss ways medicine safety to understand how medicines work their body and how important it is to use them safely.

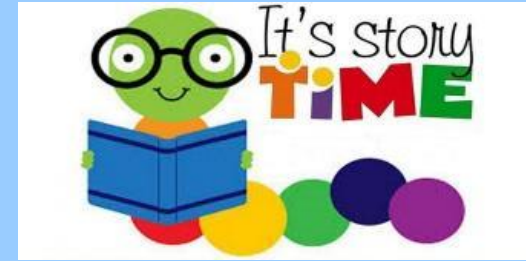


Reading

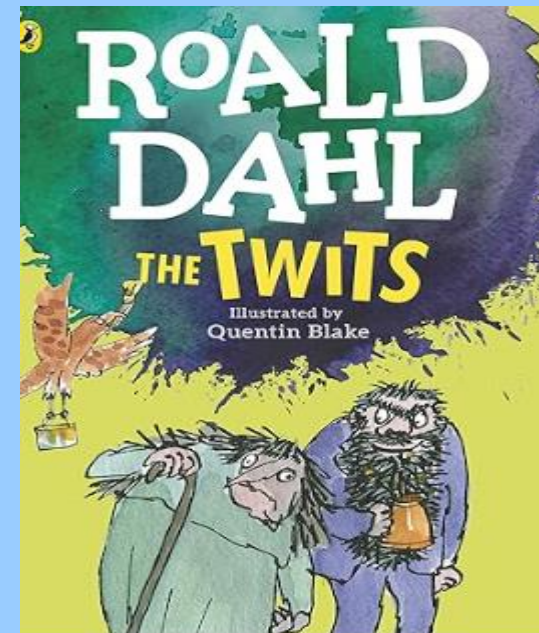
The children reads with and adult x3 a week in a small group. In the groups they are taught to:

- Identify diagraphs/trigraphs within words.
- Read fluently.
- The meaning of new unfamiliar words.
- Answer questions using the text to help them.
- Explain their answers.
- Opportunities to review books
- Read with expression taking into account of the punctuation.

Daily story time at the end of the day



Weekly reading assembly



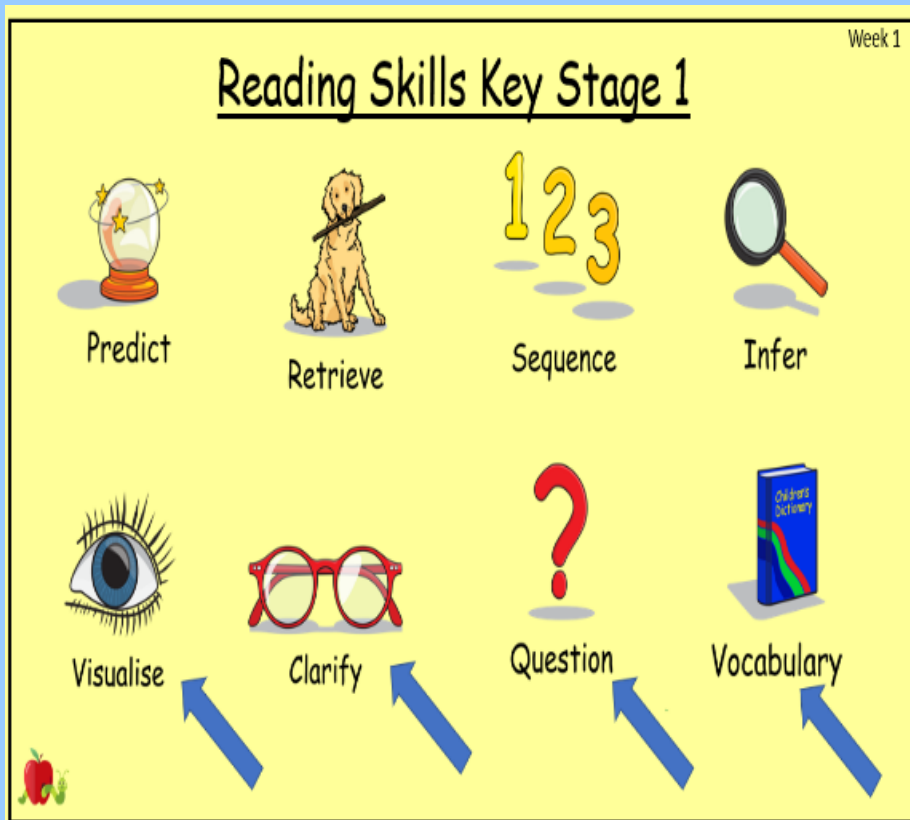
The importance of reading regularly

Supporting writing skills

Gaining and improving key skills

Reading for pleasure

**The more that you read,
The more things you will know.
The more that you learn,
The more places you'll go.**
-Dr. Seuss



- Children will change their books every week. We collect books on a Tuesday and send home books on a Thursday.
- Read with them daily.
- Ask them questions about the story e.g. What has happened? How does the character feel? How would you feel? What would you do?
- Encourage them to find the answer to the question in the text.

Friday Morning Reading

We are inviting parents and carers to come into their child's classroom and read from 8.35 – 9am every Friday morning.

This will be time to speak with their teachers about reading strategies such as:

- Support to help with decoding.
- Explaining the meaning of new words.
- Talking about the text using open questions.



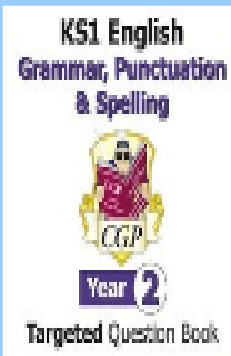
Other Information

Maths

- On a Monday children will practicing methods solve arithmetic paper as a class.
- They will discuss which methods they find easiest and how they found their answers.
- The children will then sit the same arithmetic paper on a Friday independently.
- This paper will be sent home on a Friday and their teacher will record their score.
- Helps their mental maths.

Homework

- Children will receive CGP books.
- The pages they must complete will be highlighted on the newsletter.
- Their homework will relate to what they have been learning in class that week.
- Make it an enjoyable experience.
- The answers are in the middle or back of the books. Please mark them with your child.



Useful links



<https://www.bbc.co.uk/bitesize/primary>



<https://www.twinkl.co.uk/>



Key stage 1 past papers

Resources include:

- 2022 key stage 1 test materials
- 2019 key stage 1 test materials
- 2018 key stage 1 test materials
- guidance on scaled scores

<https://www.gov.uk/government/collections/national-curriculum-assessments-practice-materials>



Questions or queries?

You are still able to email your child's class teacher directly.

Lewis class: lewisclass@winterbourne-inf.croydon.sch.uk

Carroll class: carrollclass@winterbourne-inf.croydon.sch.uk

Andersen class: andersenclass@winterbourne-inf.croydon.sch.uk

Dahl class: dahlclass@winterbourne-inf.croydon.sch.uk