

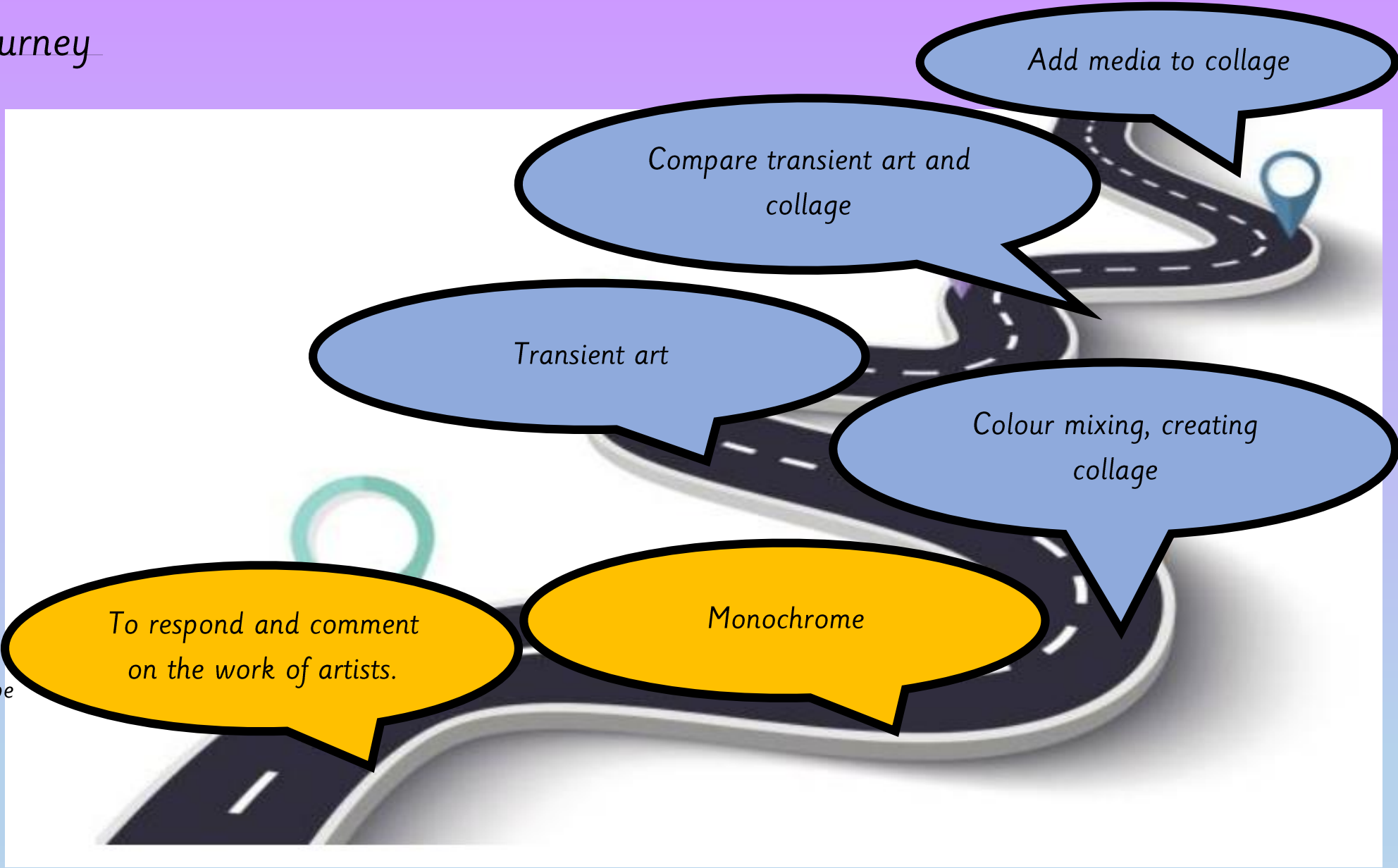


Week 2

Our Art Learning Journey

Key Vocabulary

- Bright
- Tone
- Cold colours
- Transient
- Collage
- Cut
- Moveable
- Permanent
- Dark
- Light
- Primary colours
- Secondary
- Shade, lines, circles, spirals, shape
- Materials





LQ: Can I respond to buildings around me by creating observational drawings?

Steps to success



All: I can use mark making tools

Most: I can use simple drawing techniques to represent buildings

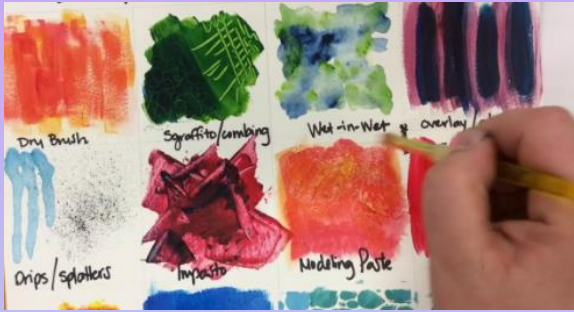
Some: I can make accurate studies of buildings using a range of shapes and lines



techniques

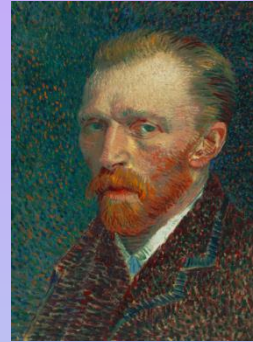


Star words



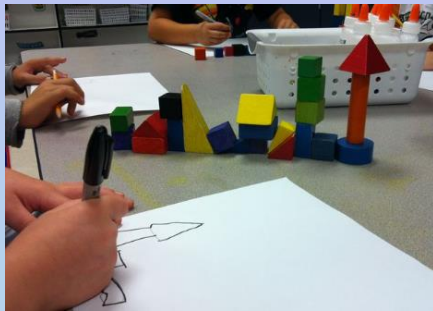
Vincent Van Gogh

Laurence Stephen Lowry



observational drawing

buildings



Line, swirl, zig-zag, wavy, spiral, spotty, dashes, dots, shape, enclosure



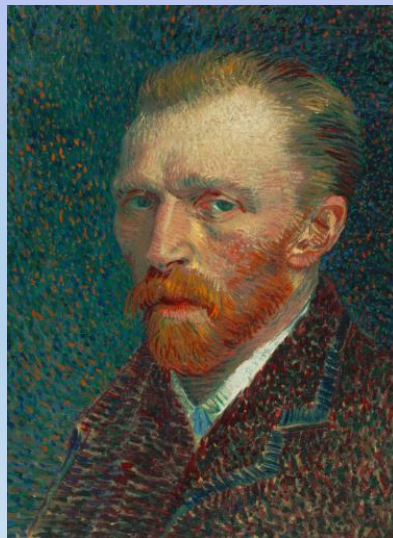
horizontal	vertical	zig zag	curves
curly	spiral	thick thin	shapes

Recap

LQ: Can I respond to buildings around me by creating observational drawings?

What artists did we focus on last week that were inspired by buildings?

Vincent Van Gogh



Laurence Stephen Lowry



Recap

LQ: Can I respond to buildings around me by creating observational drawings?

TP: What does the word artist mean?

An artist is a person who creates paintings and drawings or sculptures using different materials.

An artist is a person who creates_____.



TP: What are buildings?

A structure with a roof and walls, such as a house or factory.



LQ: Can I respond to buildings around me by creating observational drawings?

Thursday 25th April 2024

Today we will look at **monochrome** art and images. Monochrome art focuses on **a single colour** (such as a grey pencil). When using monochrome we explore tones using a single colour; shading lightly for a lighter colour and pressing down for a darker shade.



What colours can you see?

What are the images of?

What lines can you see?

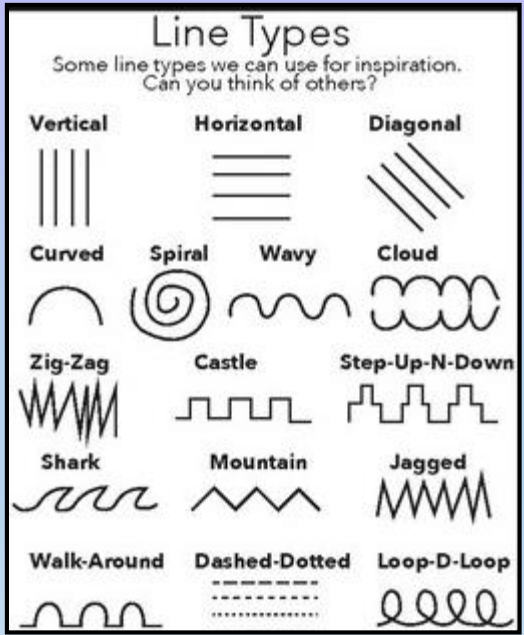
What tones did they use?

LQ: Can I respond to buildings around me by creating observational drawings?

Let's go on a walk around the school and observe buildings. We will talk about what lines we observed, remembering to use our star words to explain ourselves.

line swirl zig-zag wavy spiral
spotty dashes dots shape enclosure

Dots	
Circle chain	
Zig-zag	
Dashes	
Clouds	
Hills	
Loops	
Waves	
Mouse ears	
Lighting	
Swirl	
Castle	



TP: I saw _____.

Teacher to take pictures of the buildings so children can use them for their observational drawing.

Self assessment
 Do you understand what monochrome art is?

LQ: Can I respond to buildings around me by creating observational drawings?

Thursday 25th April 2024

Task

In our books we will complete an observational drawing of a building we saw on our walk. We will use monochrome art, using our pencil to draw the buildings using various lines, tones and shades to create our monotone drawing.



Self assessment

Do you understand the task?

