

# Our Geography Learning Journey

Key vocabulary:

Map

Towns

City

Village

Human feature

Physical feature

United Kingdom

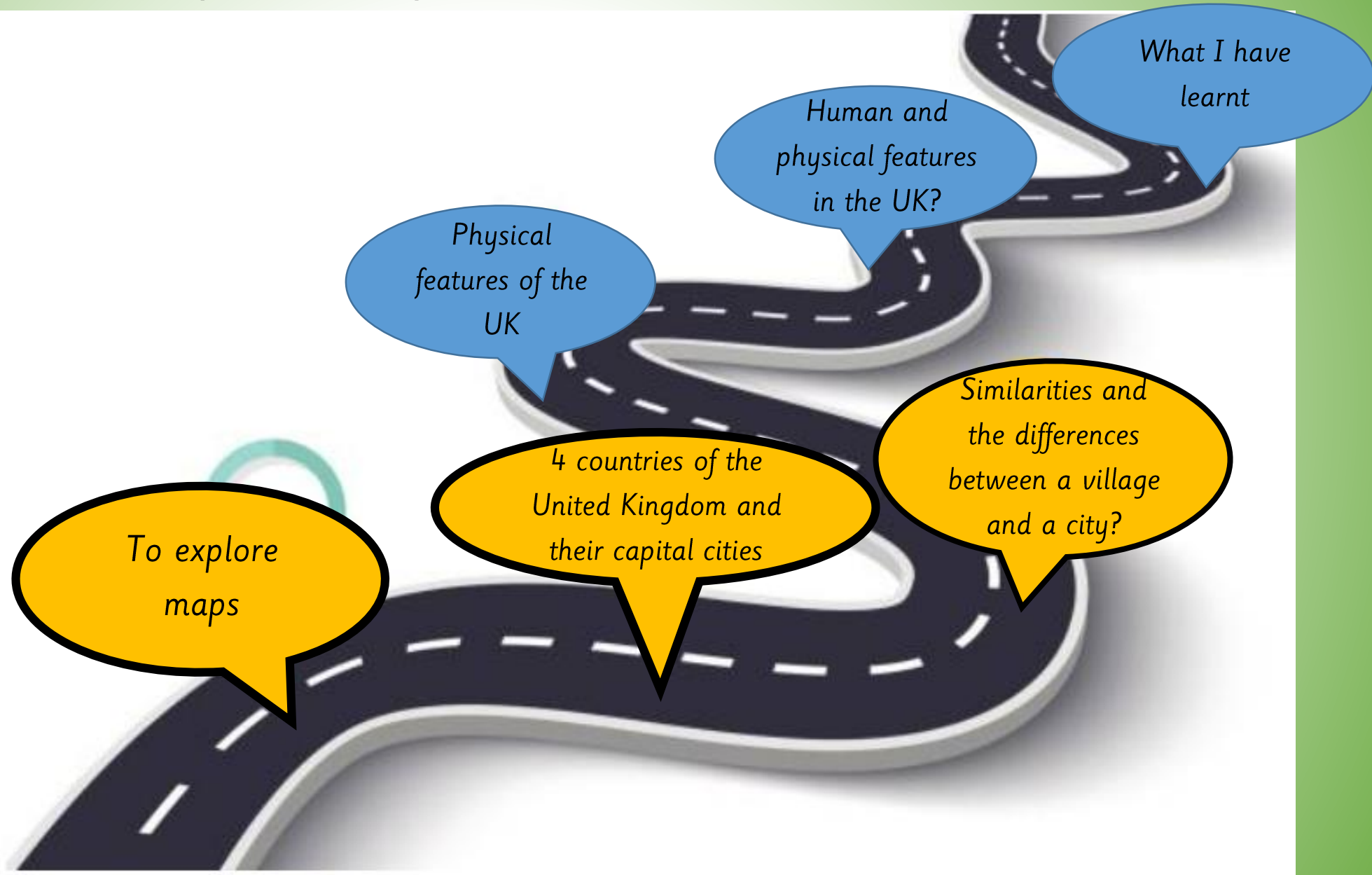
England

Scotland

Northern Ireland

Wales

Capital cities





*LQ: Can I explain the similarities and the differences between a village and a town?*

## *Steps to Success*



*All: I can name the 4 countries of the United Kingdom and the capital cities.*

*Most: I can discuss what a valley, village and town is.*

*Some: I can explain the similarities and the differences between a village, valley and a town?*

# STAR WORDS



*city*



*town*



*village*



*map of United Kingdom / UK*



*countries*





LQ: Can I explain the similarities and the differences between a village and a town?

Tuesday 30th April 2024

## Recap



Where is Scotland?

Where is Wales?

Where is England?

Where is Northern Ireland?

What is the capital city of England? What is the capital city of Scotland? What is the capital city of Northern Ireland? What is the capital city of Wales?

LQ: Can I identify and locate the 4 countries of the United Kingdom and their capital cities?

We live in the **United Kingdom (UK)**, which is made up of **4 smaller countries**. Do you remember the 4 countries in the United Kingdom and their capital cities?



<https://www.bbc.co.uk/teach/class-clips-video/geography-ks1-ks2-the-united-kingdom/zhtgrj6>

A capital city is the home to the government and ruler of a country.

England



London

Northern Ireland



Belfast

Scotland



Edinburgh

Wales



Cardiff

# LQ: Can I explain the similarities and the differences between a village and a town?

Tuesday 30th April 2024

<https://www.bbc.co.uk/teach/class-clips-video/geography-ks1--ks2-cities-towns-villages/zjn492p>

## village



- Small settlement
- Few 100 people
- Farms
- Countryside's
- A place of worship
- A few shops.

**A village** – a village is a community made up of a small number of houses, usually in a country area. A village is bigger than a **hamlet** but smaller than a town or city. The number of people can range from a few hundred to a few thousand.

**A hamlet** is a very small settlement with just a group of houses.





*LQ: Can I explain the similarities and the differences between a village and a town?*

*Tuesday 30th April 2024*

*town*



- *Larger settlement*
- *A few thousand*
- *More shops and more homes*
- *Leisure facilities*
- *Town hall*
- *Schools*

***A town** – a town is a larger area with streets, more houses, and buildings such as shopping centre, primary schools and leisure facilities. A town is larger than a village but usually smaller than a city, usually home to a population of a few thousand people.*



LQ: Can I explain the similarities and the differences  
between a village and a town?  
city

Tuesday 30th April 2024



- Bigger settlement
- Millions of people
- Lots of houses, flats, apartments
- Lots of shops
- Lots of cinemas
- Lots of restaurants
- Museums
- schools
- Very busy

**A city** – a city is the largest type of settlement, containing lots of buildings and lots of people. They usually have hospitals, sports facilities, universities, shops, offices, many houses and often a cathedral.





LQ: Can I explain the similarities and the differences between a village and a town?

Tuesday 30th April 2024

TP: What kind of settlement is Thornton Heath and why? Is it a city, a town, or a village? How do you know?



### Self Assessment

Do you understand what the similarities and the differences between a village and a town?



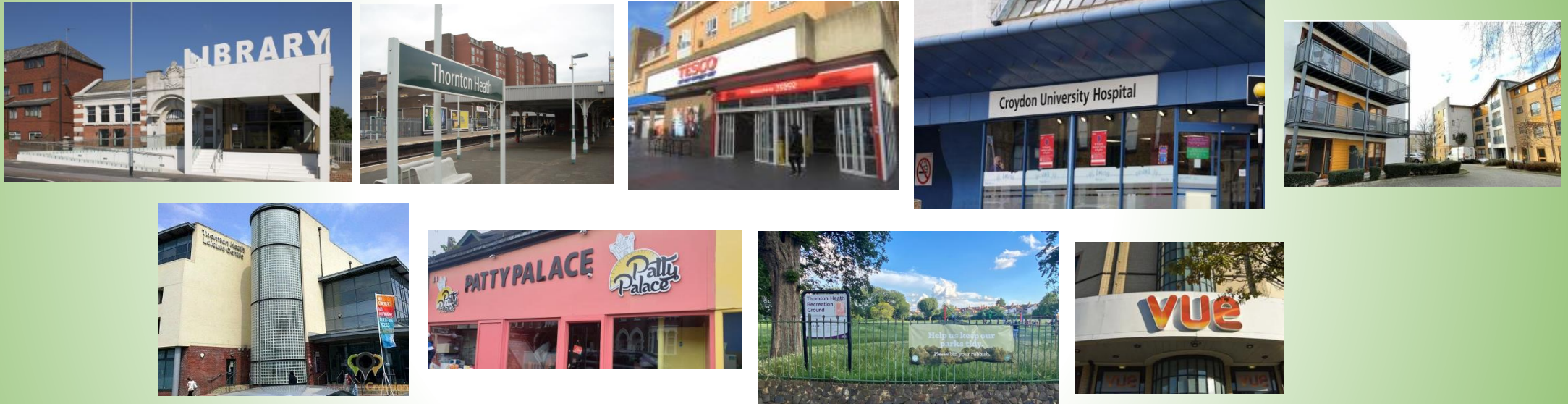


Tuesday 30th April 2024

LQ: Can I identify and locate the 4 countries of the United Kingdom and their capital cities?

## TASK

Children to choose and draw a feature of Thornton Heath.  
Write sentences/words to describe the feature.



NS

EXP/GD: What is a valley?

WTS: What is a town?

SEN: Have 2 pictures stuck in. Chn to circle the correct one. **Which picture shows a town?**

**Self Assessment**

Do you understand the task?

