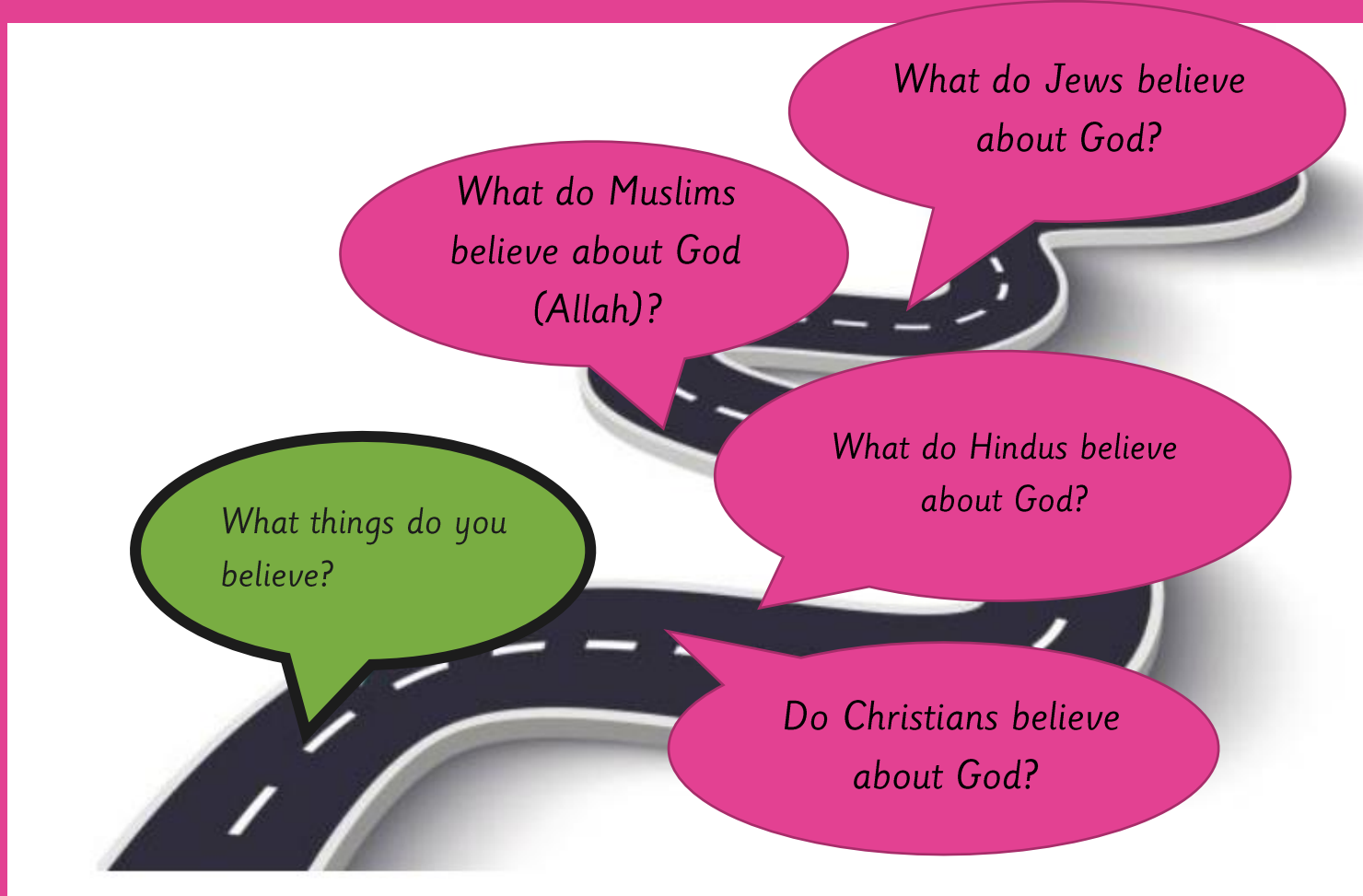


Our R.E Learning Journey

What do many people believe about God?

Key vocabulary

- **Authority**
- **Respect**
- **Belief**
- **God**
- **Creator**
- **Deity**



What things do you believe?

What do Muslims believe about God (Allah)?

What do Jews believe about God?

What do Hindus believe about God?

Do Christians believe about God?

Friday 6th September 2024



LQ: What things do you believe?

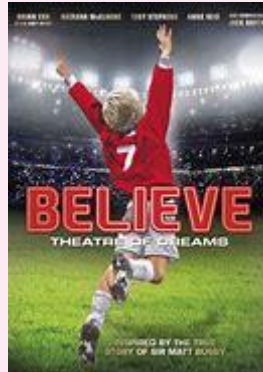
Steps to Success

- I can talk about who is special to me.
- I know that many religious people believe in God as an authority figure.
- I can explain what some people think about God.



★ *Star words* ★

believe



special

authority



God



LQ: What things do you believe?

TP: Who do you trust?

We often trust authority figures and people who are special to us, because we expect them to behave well and think of the needs of others.

This can be our parents, our teachers or other people with responsibility.

LQ: What things do you believe?

Authority figures

See if you recognize these people or the job they do. Do you trust them? Why?



LQ: What things do you believe?

Respect

TP: What does it mean to respect someone?

Do you have to respect everyone?

Do people need to earn your respect?

Do we need to show respect to the authority figures we have talked about so far?

Yes or no:

The police, our parents, celebrities, teachers.

LQ: What things do you believe?

Task

Make a list of qualities that we think an authority figure has... kind, strict, nice...?



Self Assessment

Do you understand what you have to do?



LQ: What things do you believe?

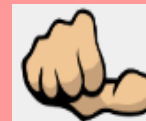
Task 2

Look at your list and decide which qualities can be applied to God. Make a word wall – each brick can have one word to describe God.



Self Assessment

Do you understand what you have to do?



LQ: What things do you believe?

Quiz

Can you decide which one you think is the best answer?



Authority figures should be truthful.

Authority figures should be kind.

Authority figures should be rich.