



*Week 3*

# Our Art Learning Journey

## Key vocabulary:

explore, lines, marks, features, face, eyes, nose, ears, mouth, head, eye brows, tone, colour, shades, portrait, self-portrait, artists, collage, abstract

Identify facial features

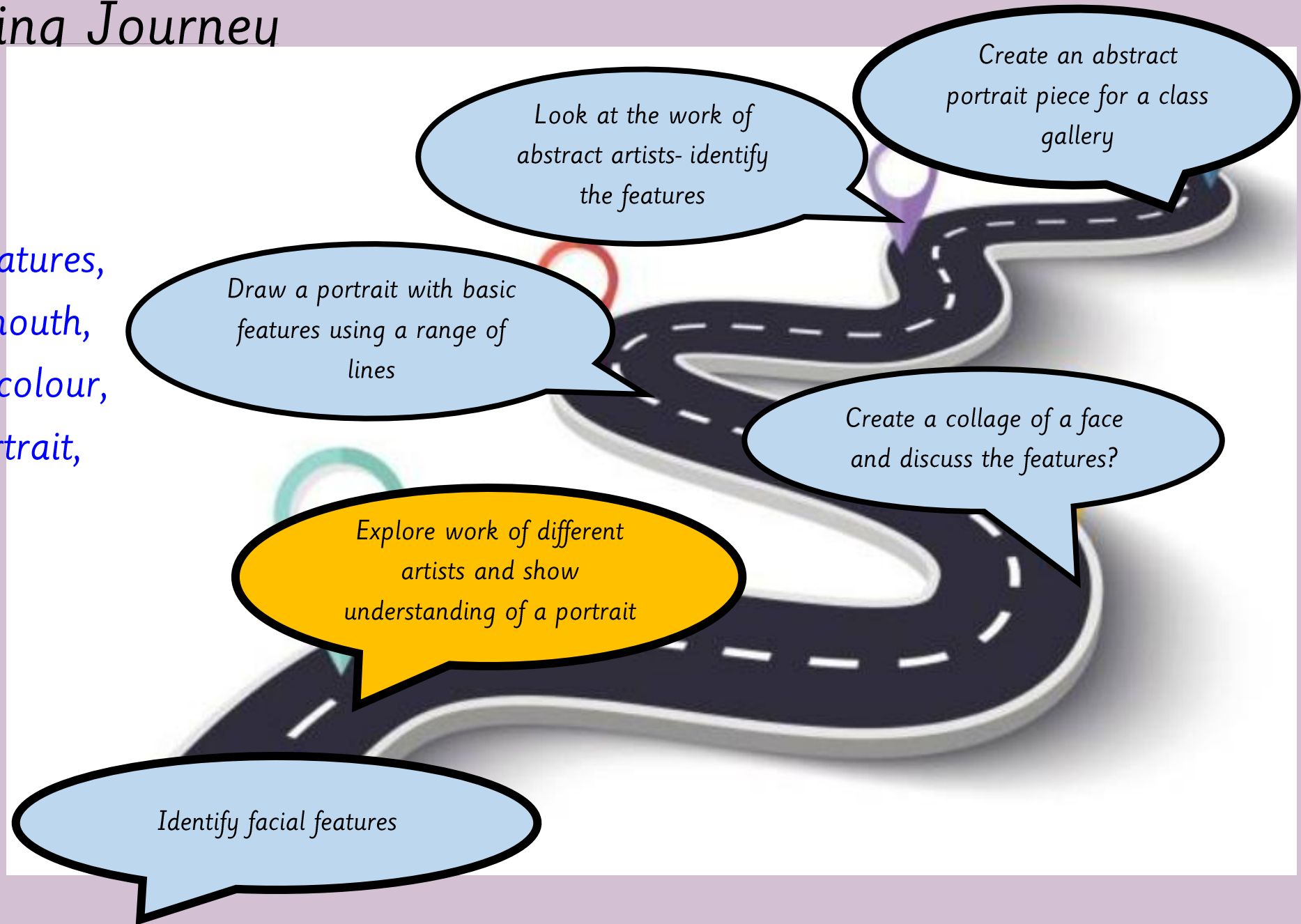
Explore work of different artists and show understanding of a portrait

Draw a portrait with basic features using a range of lines

Look at the work of abstract artists- identify the features

Create a collage of a face and discuss the features?

Create an abstract portrait piece for a class gallery





*LQ: Can I look at the work of different artists and show some understanding of a portrait?*

*Steps to success*

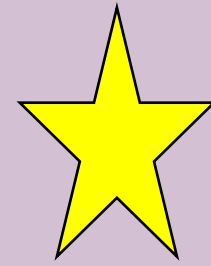
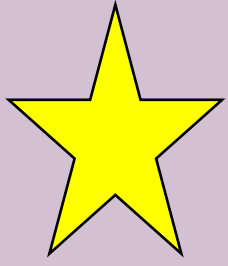


*All – I can say what I see on different art work.*

*Most – I can describe the lines and marks the artists has used.*

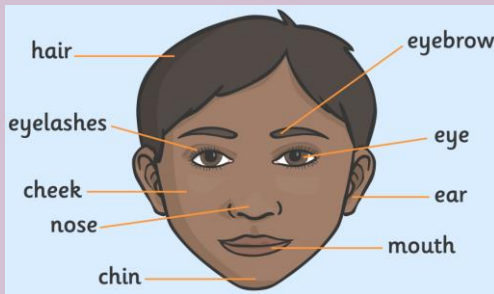
*Some – I can describe the tones and expressions.*

# Star words



*face*

*artist*



*features*

*portrait*

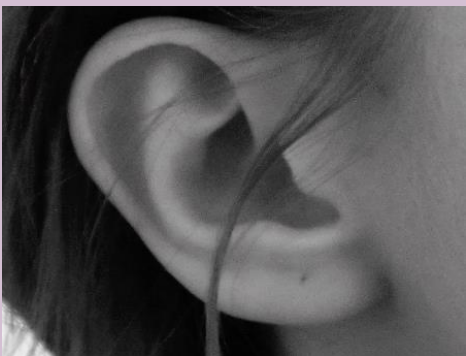
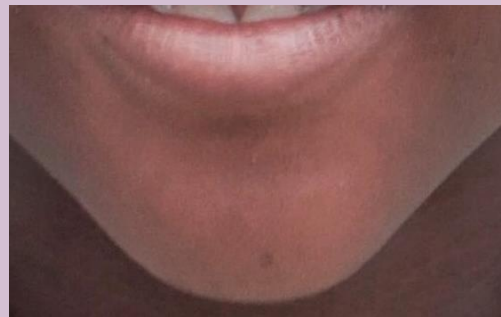


Revisit

## TPs: What are facial features?

**Facial features are the main areas on the front of the face.**

*Name the features.*



Self assessment

Do you understand what facial features are?



Revisit

## TPs: What is a portrait?

A portrait is a picture of a person or a group of people.  
Images of faces are called portraits.



Self assessment

Do you understand what a  
portrait is?



Revisit

## TPs: What are lines, marks and tones?

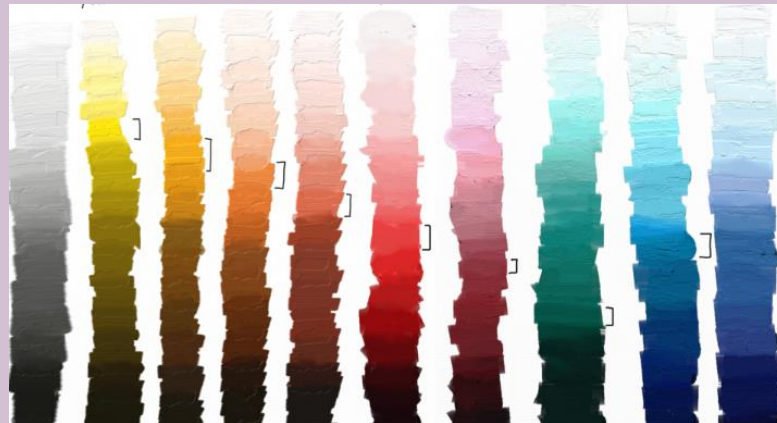
A line is a mark made by a drawing tool or a brush.



A mark describes the different lines, dots, marks, patterns, and textures we create in an artwork.



“Tone” is the word we use to describe light and dark.



Self assessment

Do you understand what lines, marks and tones are?



*Today we are going to look at different artwork of portraits created by lots of different artists.*



*Toyin Ojih Odutola*



*Pablo Picasso*



*Nelson Makamo*



*Frida Kahlo*

LQ: Can I look at the work of different artists and show some understanding of a portrait?

Wednesday 17th September 2025

Art by Toyin Ojih Odutola

TPs: What lines, marks and tones has the artist used?

How is this person feeling? How do you know?



'First Night at Boarding School' - 2017



'The Ruling Class - Eshu' - 2019



'Eastern Entrance'

## Task

**Let's take a look at different artwork of portraits.**

When you talk about the artwork, think about the facial features and expressions on their face, how they are feeling and the lines and tones the artist has used.

### Questions:

What lines and marks has the artist used?

What tones and colours has the artist used?

How would you describe the expression on \_\_\_ faces?

How are they feeling? How do you know?

What do you like/dislike about this art? Why?

How does this art make you feel?

Note: This is a discussion based lesson (No recording in books).

Take note of children who make a comment on the artwork to highlight in their books.

Take one photo of children looking at artwork during discussion and display on working wall with pupil voice for evidence.

Self assessment

Do you understand the task?

