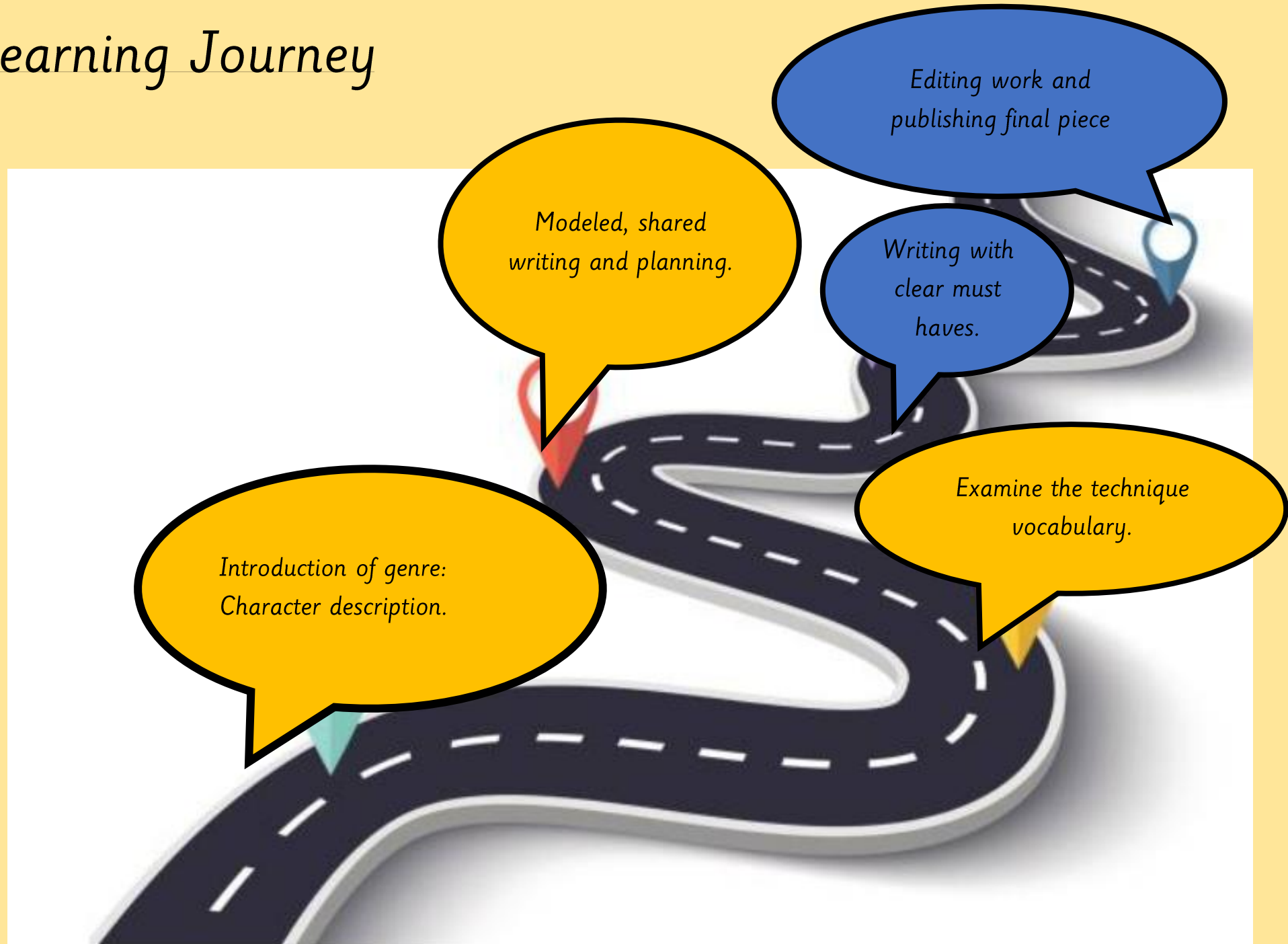


Our English Learning Journey



Key vocabulary:

Prediction
Character
Character description
Describe
Noun
Adjective
Appearance
Action
Behaviour



Monday 10th November 2025-
Science Day

Tuesday 11th November 2025

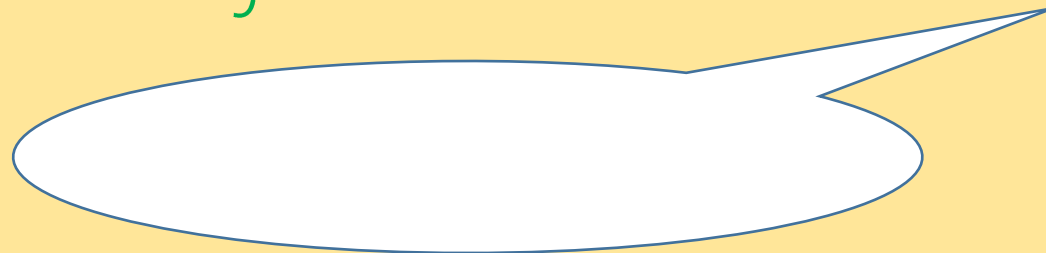
Noun

A noun is a name of a person, place, animal or thing.

Sentence

“A pen is a noun.”

TPs- Can you use it in a sentence?



Phase 4 tricky words





LQ- Can I identify nouns?



Steps to success

- *I can understand what a noun is.*
- *I can identify a noun.*
- *I can categorise nouns.*

Star Words



noun

A noun is a person, place, animal, or thing.

Person	Place	Animal	Thing
girl boy	school	dog	book
Mom Dad	home	bee	flower
Grandma	playground	frog COW	tree
Grandpa	zoo	lizard	pen
Mrs. Jones			paint





TPs- Can you think of a person?

_____ is a noun.

Name of a Person



Scarlett

footballer

doctor

teacher

boy

popstar



TPs- Can you think of a place?

_____ is a noun.

Name of a Place



school

London

shop

church

swimming pool

beach



TPs- Can you think of a thing
(animal or object)?

A _____ is a
noun.

Name of a Thing



book

cat

pencil

television

ball

chair



Task

We are going on a **noun** hunt. We are going around our class and the school to identify nouns.

person **place** **thing**

person	place	thing

Self Assessment

Do you understand what you have to do?



Wednesday 12th November 2025



LQ- Can I identify adjectives?



Steps to success

- *I can understand what an adjective is.*
- *I can identify an adjective.*
- *I can share my ideas and use an adjective in a sentence.*

Review

Wednesday 12th November 2025

TPs- What is a noun?



A noun is a ____

<https://www.youtube.com/watch?v=9cu7C07pNbA>

Star Words

describe

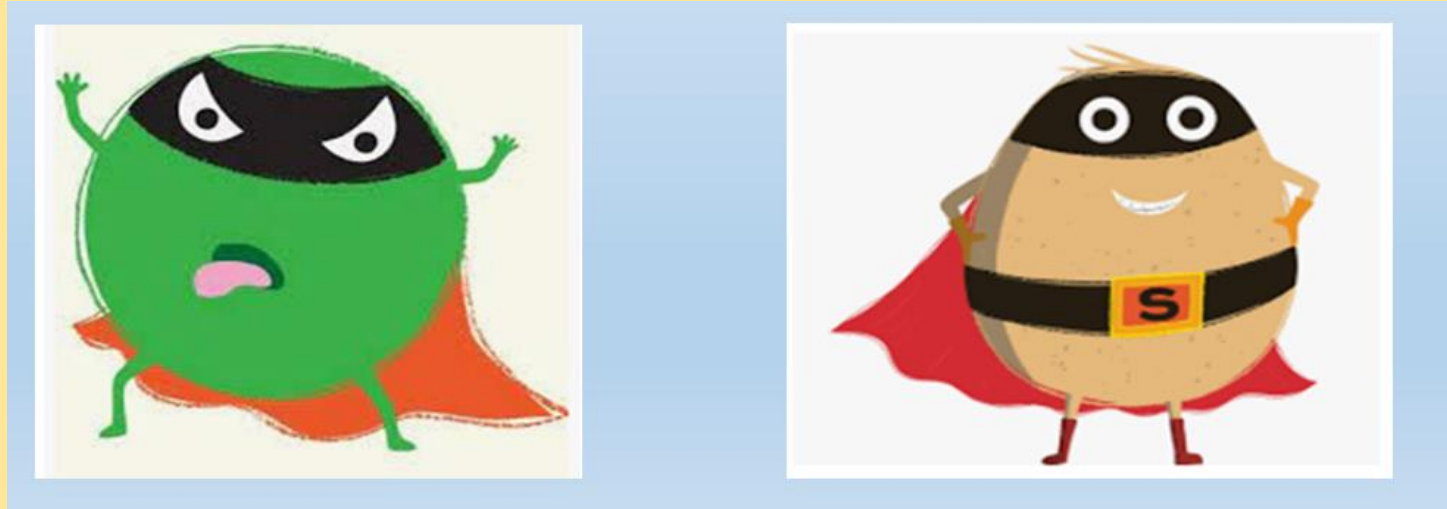


adjective



LQ: Can I identify adjectives ?

Wednesday 12th November 2025



Last week, we described characters in the Supertato story and discussed how they **looked**, **felt** and **behaved**. Today we are going to use similar words to **describe** nouns. These words are called **adjectives**.

LQ: Can I identify adjectives ?

Wednesday 12th November 2025

<https://www.bbc.co.uk/bitesize/topics/zrqqtfr/articles/zy2r6yc>



An adjective is a **describing** word.

There was a bee in the bathroom.



Nice to meet you!
My name is Adam
Adjective. I love to
describe things in
lots of detail and
make writing even
more exciting.



+adjectives

There was a **huge, hairy** bee in the bathroom.

An adjective is a **describing** word.

I found a ladybird on a leaf.



+adjectives

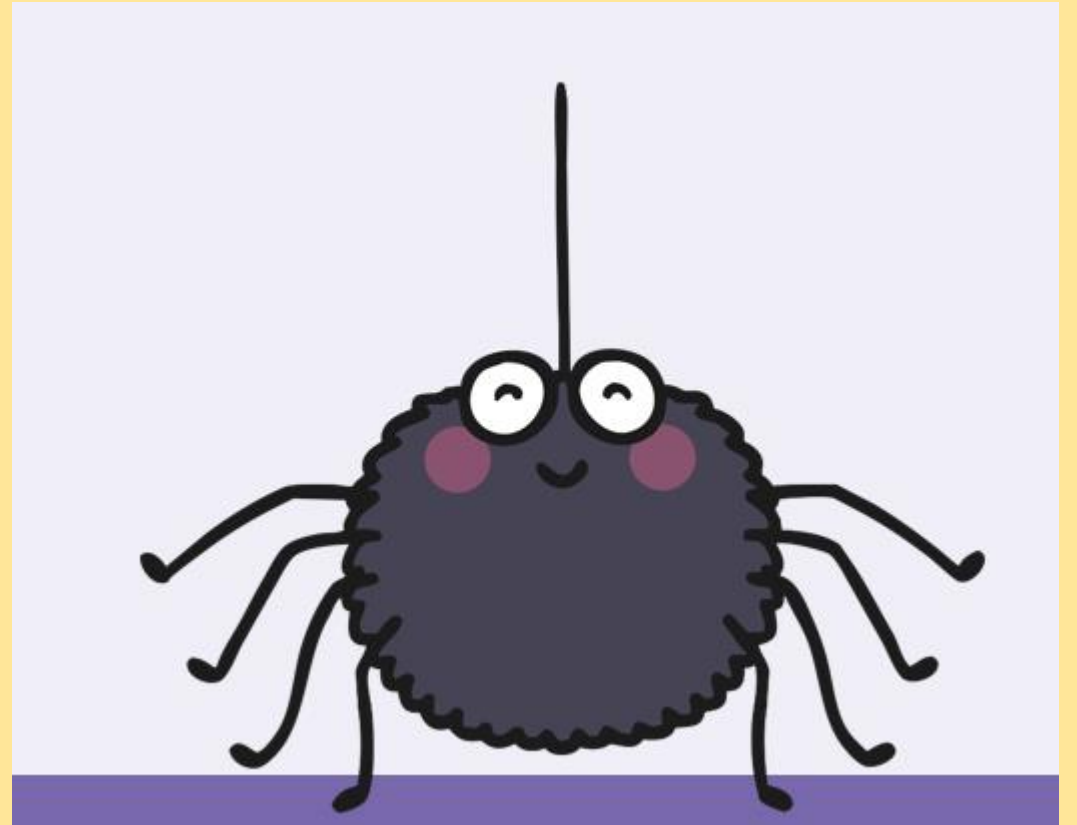
I found a **tiny** ladybird on a **big** leaf.

LQ: Can I identify adjectives ?

Wednesday 12th November 2025

TPs- Can you think of an adjective
to describe this spider?

A _____ spider.



LQ: Can I identify adjectives ?

Wednesday 12th November 2025

TPs- Can you think of an adjective to describe this butterfly?

A _____ butterfly.



LQ: Can I identify adjectives ?

Wednesday 12th November 2025

Which adjective best describes these boots?



black

colourful

big

Why have you chosen this adjective?

LQ: Can I identify adjectives ?

Wednesday 12th November 2025

Which adjective best describes this man?

tall

angry

happy

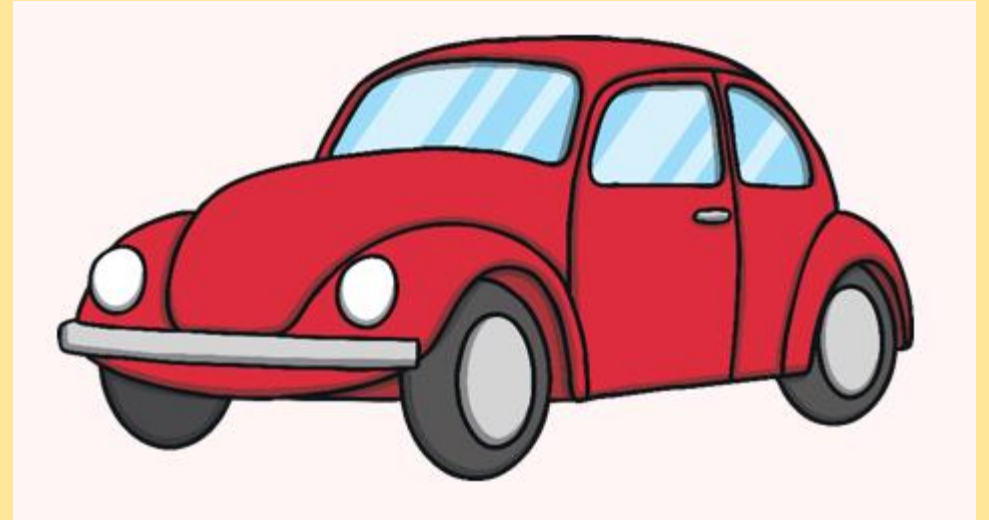
Why have you chosen this adjective?



LQ: Can I identify adjectives ?

Wednesday 12th November 2025

Which adjective best describes this car?



tiny red scary

Why have you chosen this adjective?

Task

Today you are going to work in pairs and match nouns to their correct *adjective*. The word that *describes* the noun.

Self Assessment

Do you understand what you have to do?



tall

short

Thursday 13th November 2025

Review



TPs- What is an adjective?

*An adjective is a _____
word.*

*It is a word that _____ a
noun.*



LQ- Can I think of adjectives ?



Steps to success

- *I can identify an adjective.*
- *I can understand how to use an adjective.*
- *I can think of an adjective.*

Star Words

adjective

bitter cuddly deafening indigo

ADJECTIVES:
describe, identify or further define nouns and pronouns

sparse narrow old rapid

DICTIONARY

noun

A noun is a person, place, animal, or thing.

Person	Place	Animal	Thing
girl boy	school	dog	book
Mom Dad	home	bee	flower
Grandma	playground	frog	shoe
Grandpa	zoo	cow	pen
Mrs. Jones		lizard	paint

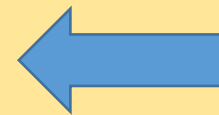
LQ: Can I think of an adjective ?

Yesterday we learned how to describe **nouns** using **adjectives**. We learned that a describing word is called an **adjective**.

adjective



tall



noun

The **tall** giraffe.

LQ: Can I think of an adjective ?

On Monday we went on a **noun** hunt, today we are going to think of **adjectives** to describe those nouns.

person	place	thing

Remember an **adjective** is a describing word and gives more detail/ information about the **noun**.

<https://www.youtube.com/watch?v=HWB8rTg0jzQ>

When thinking of *adjectives*, you can use your 5 senses.



What does it **look** like?

What does it **sound** like?

What does it **taste** like?

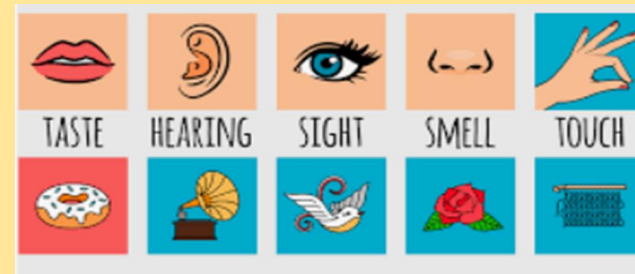
What does it **smell** like?

How does it **feel**?

I am going to ask someone to collect an object in the classroom.

In talk partners, use your **5 senses** to think of **adjectives** to describe it.

TPs- What **adjective** can I use to describe this object. Think about how it looks, feels, sounds, smells and tastes.



Let's put it in a sentence.....

The _____ is

(Repeat with another object from the classroom.)

LQ: Can I think of an adjective?

Thursday 13th November 2025

(Using a child's book from Monday's lesson- noun hunt)

TPs- How can I describe this noun?

The _____ is _____.

(Write answers / full sentences in shared write with the class.)



Writing Checklist

Writing/genre focus: Sentence

- Say it out loud, does it make sense?
- Use your phonics sounds to write.
- Start with a capital letter.
- Write on the line.
- Use finger spaces.
- End with a full stop.

LQ: Can I think of an adjective?

Task

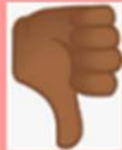
Thursday 13th November 2025

Use your noun hunt list from Tuesday to write a descriptive sentence, using an *adjective* to describe the *noun*.

The _____ is _____.

Self Assessment

Do you understand what you have to do?



Friday 14th November 2025

What have we learnt this week?

noun

TPs- What is noun?

A noun is_____.

<https://www.youtube.com/watch?v=aPeMKdEzGDs>

adjective

TPs- What is an adjective?

An adjective is _____ word.

<https://www.bbc.co.uk/bitesize/topics/zrqqtfr/articles/zy2r6yc>

Friday 14th November 2025



LQ- Can I describe a character?



Steps to success

- *I can discuss the characters in the story.*
- *I can think of adjectives.*
- *I can describe a character using adjectives.*

Star Words



adjective

describe

characters



LQ: Can I describe a character?

This is a **noun**. It's a character we know called Supertato. Let's think of **adjectives** to describe him.

TPs- How does he act ?
How does he move?
How does he behave?



(Shared write on A3 paper to go on learning wall)

This is also a **noun**. It's a character we know called Evil Pea. Let's think of **adjectives** to describe him.

TPs- How does he act ?

How does he move?

How does he behave?



(write descriptions given by children on a paper to go on learning wall)

Task

Decide between Supertato or Evil Pea and write sentences describing that character, using *adjectives*.



Supertato is _____.

Evil Pea is _____.

Self Assessment

Do you understand what you have to do?

