



# PSHE

## Week 3



# Starter

*Have the signs **yes/no** at either end of your classroom.*

*Ask questions such as do you like pizza.  
Children hop to either **yes** or **no** depending  
on their answer.*

Tuesday 18th November  
2025



*L.Q Can I describe what bullying is?*



*Steps to success*

*I understand how being bullied might feel.*

*I know what do to if someone was being bullied.*

L.Q Can I describe what bullying is?

Tuesday 18th November  
2025

Calm me

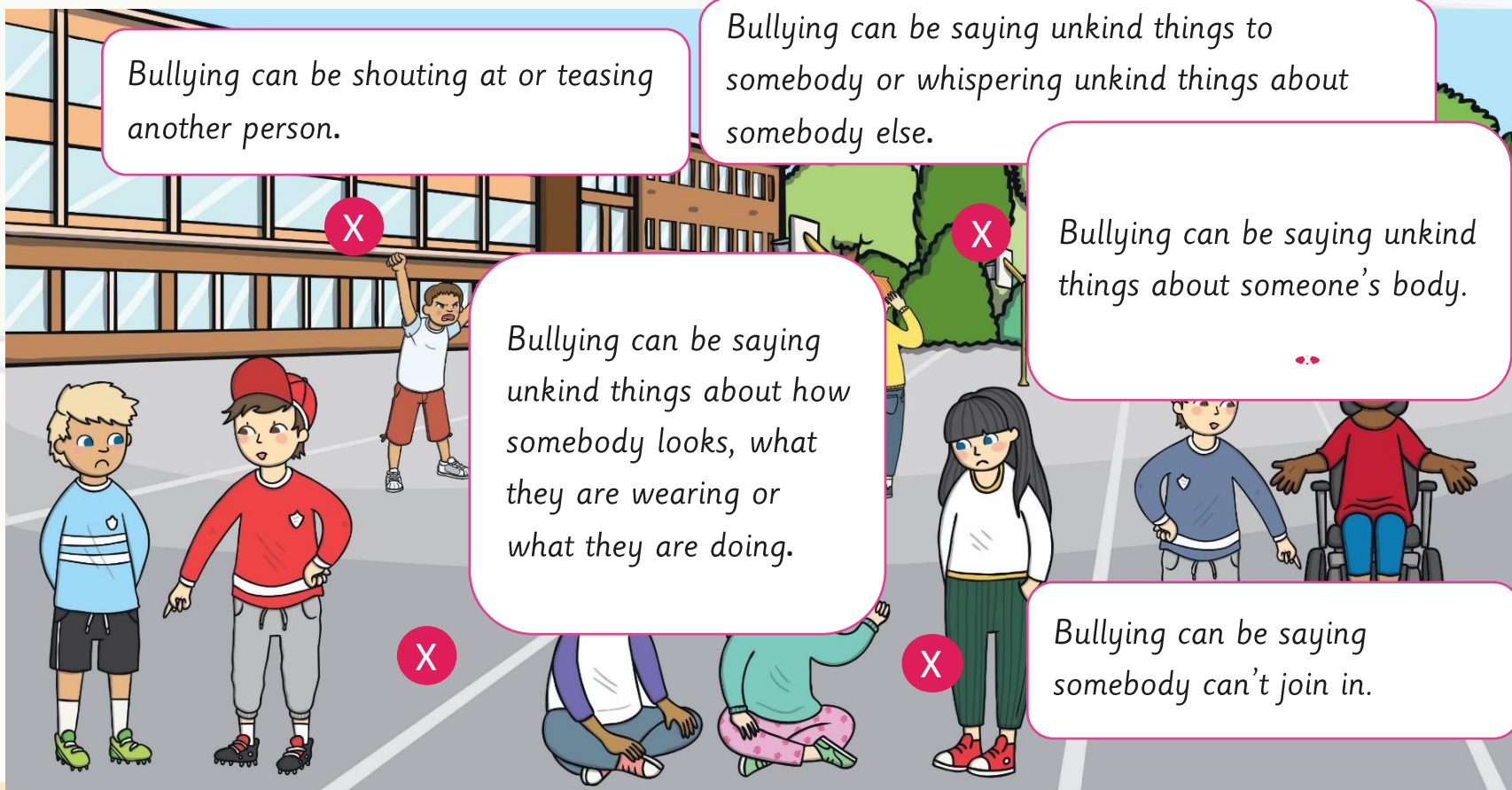


Ring the chime . Stay silent so you  
can hear the chime.

What thing that makes you happy  
will you think of?

Tuesday 18th November  
2025

Remember, bullying is hurting someone on purpose, over and over again. It is not when an unkind thing happens only once.



## Let's create a mind map.

Bullying sometimes happens because we are all **DIFFERENT**

?

*Bullies might be jealous of someone else's talents.*

?

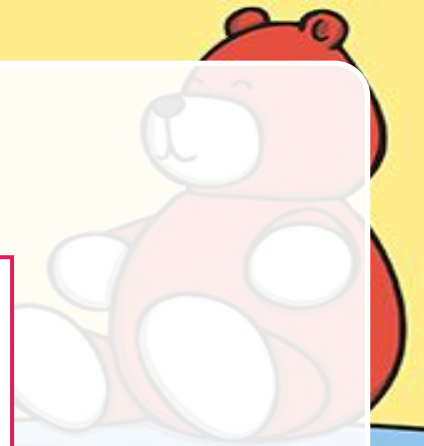
*Bullies might be jealous of other friendships.*

?

*Bullies might feel angry or bad about themselves.*

?

*Bullies might have been bullied or might not understand what bullying is.*



# We Are All Different

We are different for lots of different reasons.

height

eye  
colour

skin  
colour

what we  
find tricky  
to do

body  
shape

weight

hair  
colour

family

what we  
find easy  
to do

Can you  
think of  
any more?



# What Is Anti-Bullying Week?

?

*It is an annual event that is held every November.*

?

*It is an event that takes place in schools.*

?

*It aims to raise awareness of bullying.*



Photo courtesy of Working Word (@flickr.com) - granted under creative commons licence - attribution



# Anti-Bullying Week 2025

- The theme this year is:  
*Respect*
- It starts with one kind word. It starts today.

**Remember:**

We can all make a change by listening, by noticing and by working together to stop bullying.

Some children may wear odd socks for Anti-Bullying Week. Odd socks show that we are all different.



# What Should You Do If You Are Being Bullied?



Somebody can always help.

**Tell  
someone!**



Even if it's not you being bullied, help other people around you. Ask if they are OK or if they need something.

# True or False?<sup>2025</sup>

You can tell somebody is a bully just by looking at them.

false

If you are a bully, you will always be a bully.

false

Bullies make people feel upset.

true

Nobody should be bullied because they are different.

true

## Self Assessment

Do you understand what bullying is and what you do when you are being bullied?

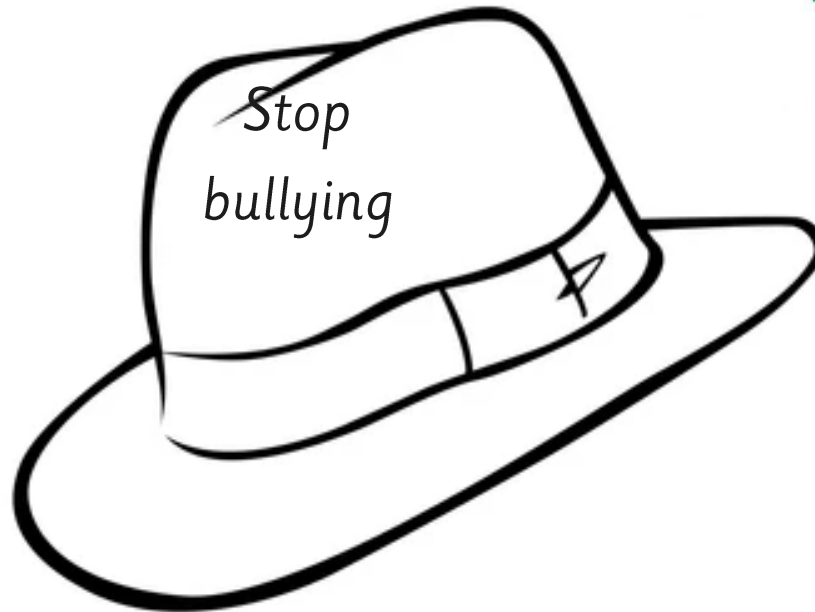
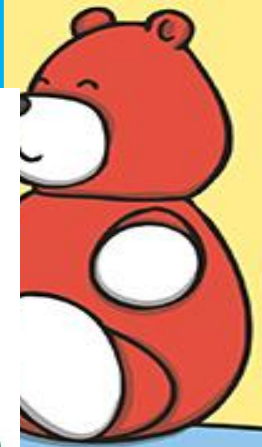




# Task

Tuesday 18th November  
2025

Think of anti-bullying slogans.  
Write your of some slogan on a  
hat



shutterstock.com · 62975692



Self Assessment

Do you understand the task?

