

Our R.E Learning Journey

Key vocabulary:

- Altar
- Minaret
- Qui'blah
- Ark
- Bimah
- Church
- Mandir
- Synagogue
- Mosque

What makes a place special?

Where do Muslims go to worship?

Where do Jewish people go to worship? Spr 1 wk 5/6

Where do Hindus Worship?
What is the name of their place of worship?

What are some of your favourite places?

Where do Christians go to worship?



Steps to success



I can name the place where Hindus worship.

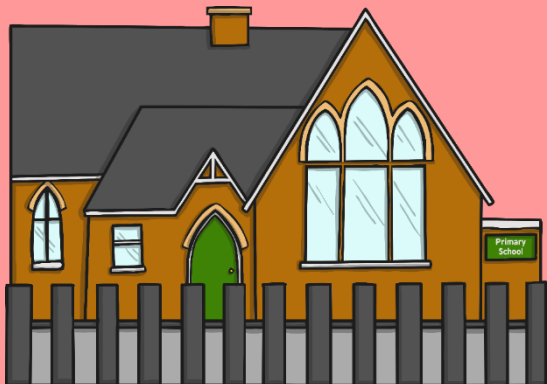
I know what a puja tray is.

I know how to show respect in special places.

This year we are learning about Belonging.

Belonging means feeling like you fit in. It means feeling like you are in the right place.

This half term we will think about special places people go to worship God.



Star words



Puja tray



Hinduism



Hindu



Mandir



Let's recap....

Last week we thought about churches and Christian worship.

LQ: Where do Christians go to worship?

Christians might go to church to:

- Pray
- Sing
- Worship
- Read the Bible
- Get married
- Get baptised
- For a funeral
- To meet new friends



TP: Can you remember three things you would expect to see inside a Christian Church?

I remember....

Hindu worship

- Many people who believe in a faith, have a special place/ building where they can pray and celebrate their religion.
- One place Hindus worship is called a **Mandir**.
- Hindus also worship at home.
- Most Hindus have a home shrine.



LQ: Can I explain where Hindus go to worship?

Monday 17th November 2025



Shoe Rack

A place to store shoes before entering the Mandir.

Important Features of a Hindu Mandir



Murtis

A murtis is a statue of God, a god or goddess.



Main Shrine

This is the heart of the temple to represent the heart of the worshipper. It is usually at the front of the temple.



Bell

Worshippers ring the bell before entering to let God know they have arrived.



Important Features of a Hindu Mandir

Vedas

These are the ancient Hindu texts. They are kept safe in a special case.



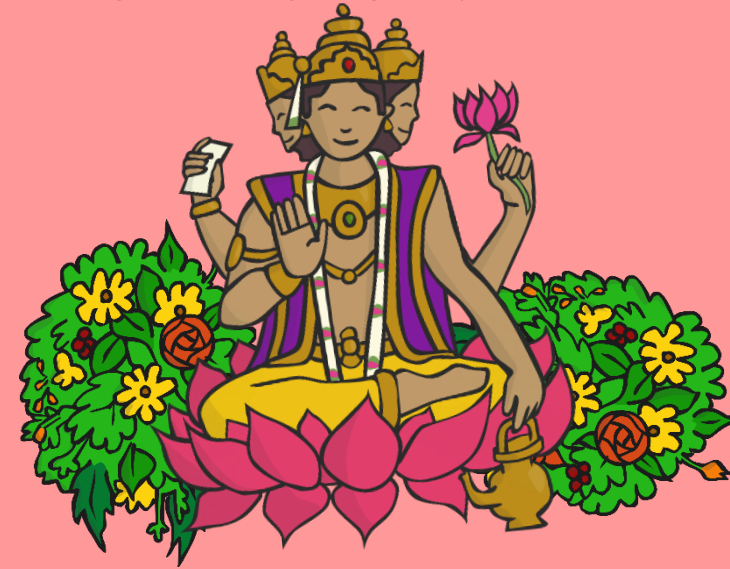
Aum

This is the Hindu symbol. You may see this is if you ever visit a Hindu temple.

Why do people go to a Hindu Mandir?



Worship takes place here. Hindus can attend their local **Mandir** to be peaceful, pray and sing religious songs.



Each Mandir is dedicated to a god and inside will be a **shrine** to that god.

Offerings such as flowers, fruit, water, milk, nuts or sweets are made.

Incense (a nice smelling fragrance) is burned to make the temple feel special.

During **worship** Hindus chant the names of gods and goddesses.

Showing Respect

- *Before entering the Mandir you have to wash, make sure you are wearing clean clothes and remove your shoes.*
- *Hindus can make offerings to the gods.*
- *Sometimes men and women need to worship separately.*
- *Bow to show respect to the gods.*

TP- stand up and show your partner how to bow.

Self assessment

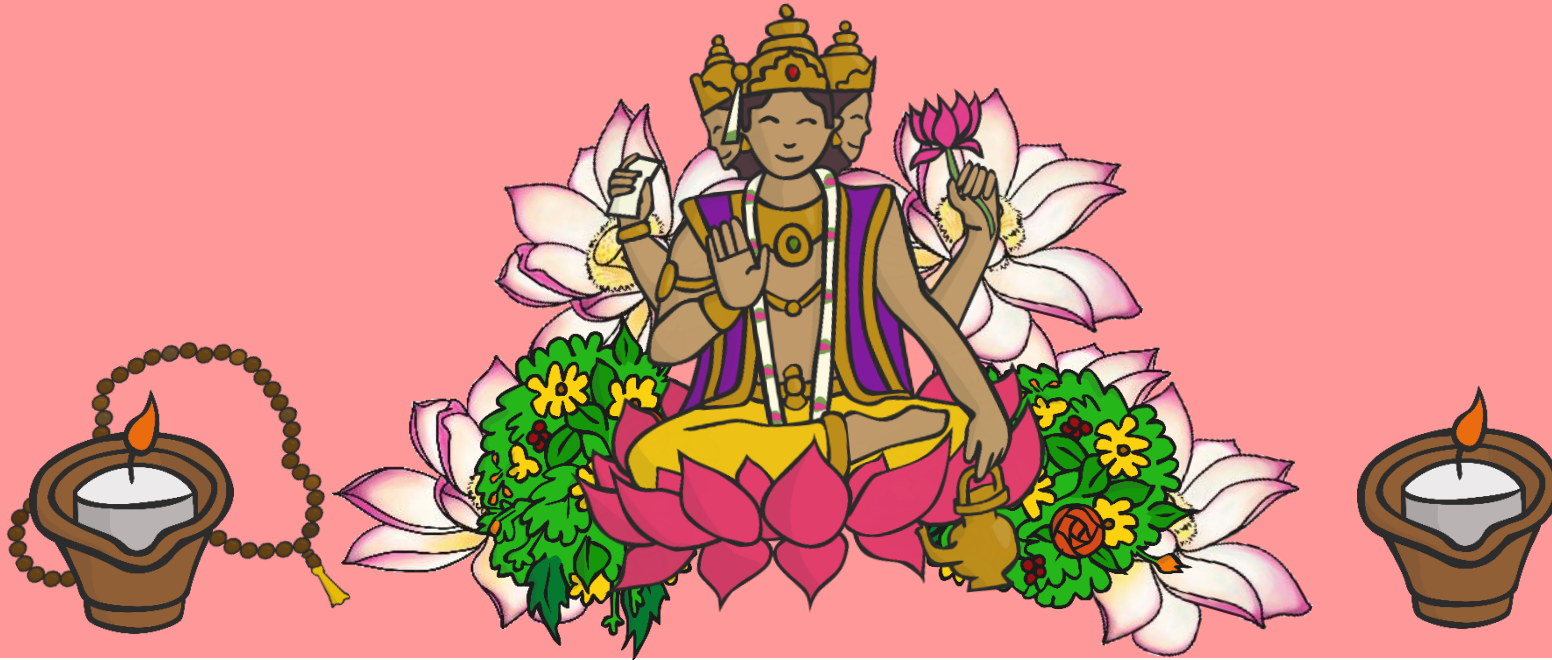
Do you understand how to show respect in a Mandir?



Vraj is going to tell us how he worships. (4 minutes)

- <https://www.youtube.com/watch?v=o-s0mN5P8jo>





Hindus can worship at **home**. Making **offerings** to the gods is something that can be done at home too.

In a Hindu home there may be a shrine where offerings can be made and prayers are spoken. The shrine could be as big as a room, a small corner or a statue.



It is a way of honouring the gods and goddesses. A daily *puja* ceremony uses all five of the senses.

Object	Use in worship	Sense
Bell	To awaken the god or goddess and symbolise the beginning of the worship.	Hearing
Food	To make a gift, fruit or other food is placed in the shrine as an offering to the deity.	Tasting
Murti	An image of the god or goddess being worshipped.	Seeing
Incense and flowers	Burning incense sticks fill the room with scent, symbolising the presence of the deity. Flowers are often placed in the shrine to honour the deity.	Smelling
Kum-kum powder	Making a coloured mark on the worshipper's forehead shows honour to the deity and reminds the worshipper of their devotion throughout the day.	Touching

TP- Which sense is used for each item on the puja tray?

Task

Stem sentence:

Inside a Mandir you will see a _____.

