



*Week 5*

# Our Art Learning Journey

Key vocabulary:

- |              |                 |
|--------------|-----------------|
| Drawing      | Colour          |
| Techniques   | Tones           |
| Mediums      | Mix             |
| Sketching    | Primary Colours |
| Materials    | Artists         |
| Curved       | Influential     |
| Lines        | Portrait        |
| Zig-zag      | Busts           |
| Tones        | Stimulus        |
| Expressions  | Cross-Hatching  |
| Shapes       | Texture         |
| Observations |                 |



Monday 25<sup>th</sup> November 2025



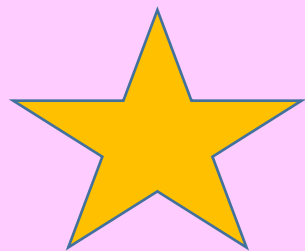
*LQ: Can I comment on the work of different artists?*

*All – I can understand what a portrait is.*

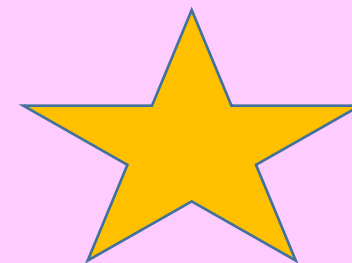
*Most – I can discuss features of a portrait.*

*Some – I can analyse different portraits and comment on the facial expressions, poses and representations.*

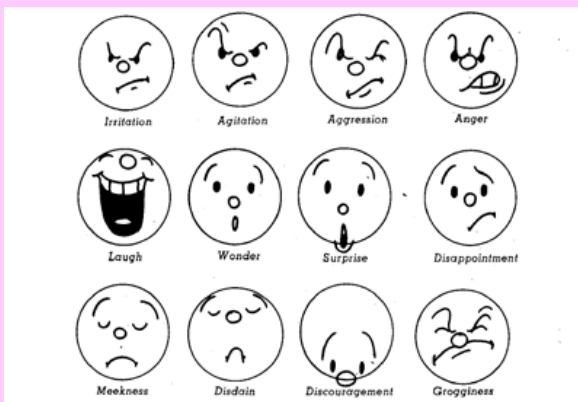




# STAR WORDS



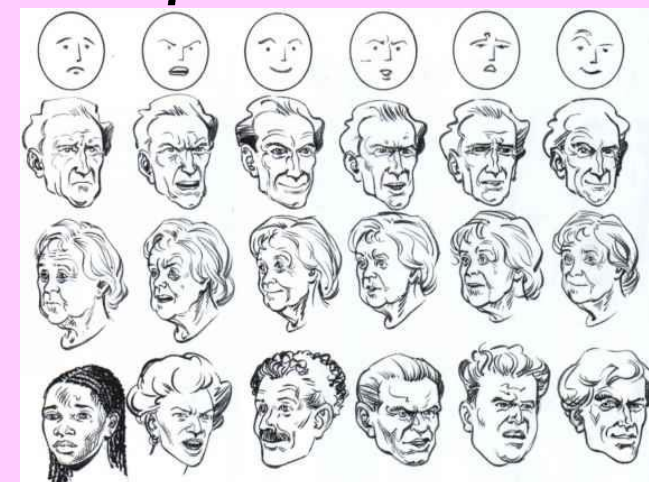
expression



face

portraiture

head



portrait

pose



artist

Let's recap our learning...

TP: What did you do last lesson?

Did you create different tones?

Were you able to create your skin tone?

### Self Assessment

Do you understand what tone means?



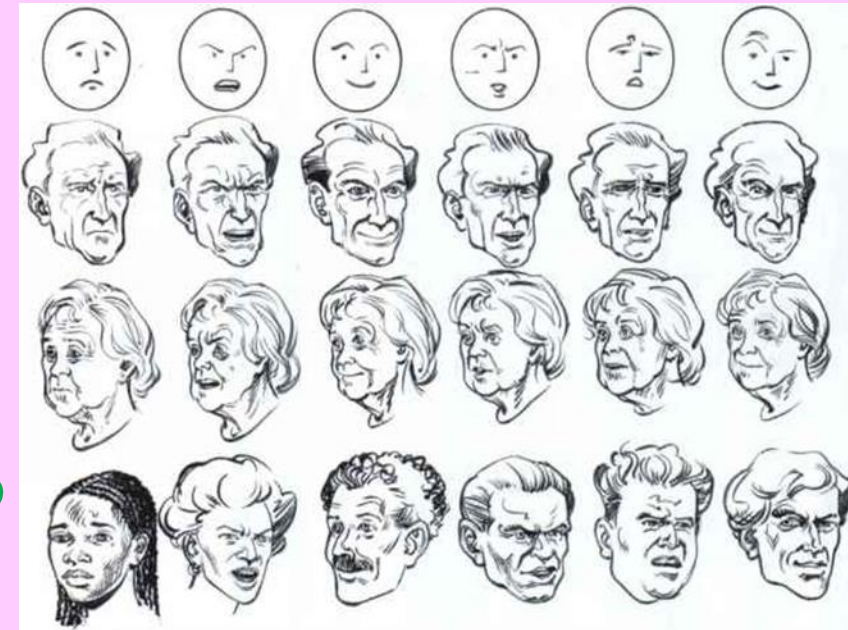
Next week we will be creating our own portraits of someone influential. You will need to bring in a picture of that person, it could be someone famous, someone in your family or that you know.

TP:

Who will you chose and why?

What is a portrait?

What part of them will it focus on and why?



*Portraiture is the recording of an individual's appearance and personality, whether in a photograph, painting, sculpture, or any other medium.*

*Here is a picture of a famous portrait 'Mona Lisa' by an Italian artist called Leonardo da Vinci.*

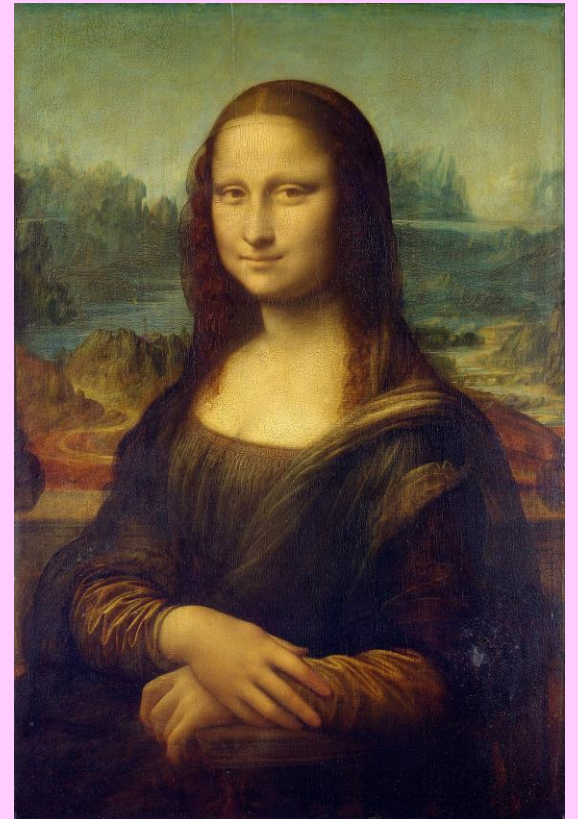
*TP: What does the picture tell you about this person?*

*How is their facial expression?*

*What does the portrait represent?*

*Are there any outstanding features of the person?*

*How is she posing?*



*Here is a portrait picture of the famous King Henry VIII(8<sup>th</sup>), who was a king of England that had six wives over the course of his life. He was a significant individual, can you tell why?*

TP:

*What does the picture tell you about the person?*

*How is their facial expression?*

*What does the portrait represent?*

*Are there any outstanding features of the person?*

*How is he posing?*



LQ: Can I comment on the work of different artists?

Monday 24<sup>th</sup> November 2025

Here are more examples of significant individuals you have learnt about.

TP - What do their portraits say about them?



**TASK** - Look at the portraits of these significant individuals and comment on their poses, facial expression and representations.



*Stem sentence:*




*I think the portrait of [name] shows...*

*[name]'s facial expression shows...*

*Their [feature] stands out in the picture because...*

**Self Assessment**

Do you understand what you have to do?

Stem sentence:

- I think the portrait of \_\_\_\_\_ shows...
- \_\_\_\_\_'s facial expression shows...
- Their \_\_\_\_\_ stands out in the picture because...
- \_\_\_\_\_'s pose is..... because..

Marcus Rashford

Martin Luther King

Rosa parks

Queen Elizabeth

Malala Yousafzai