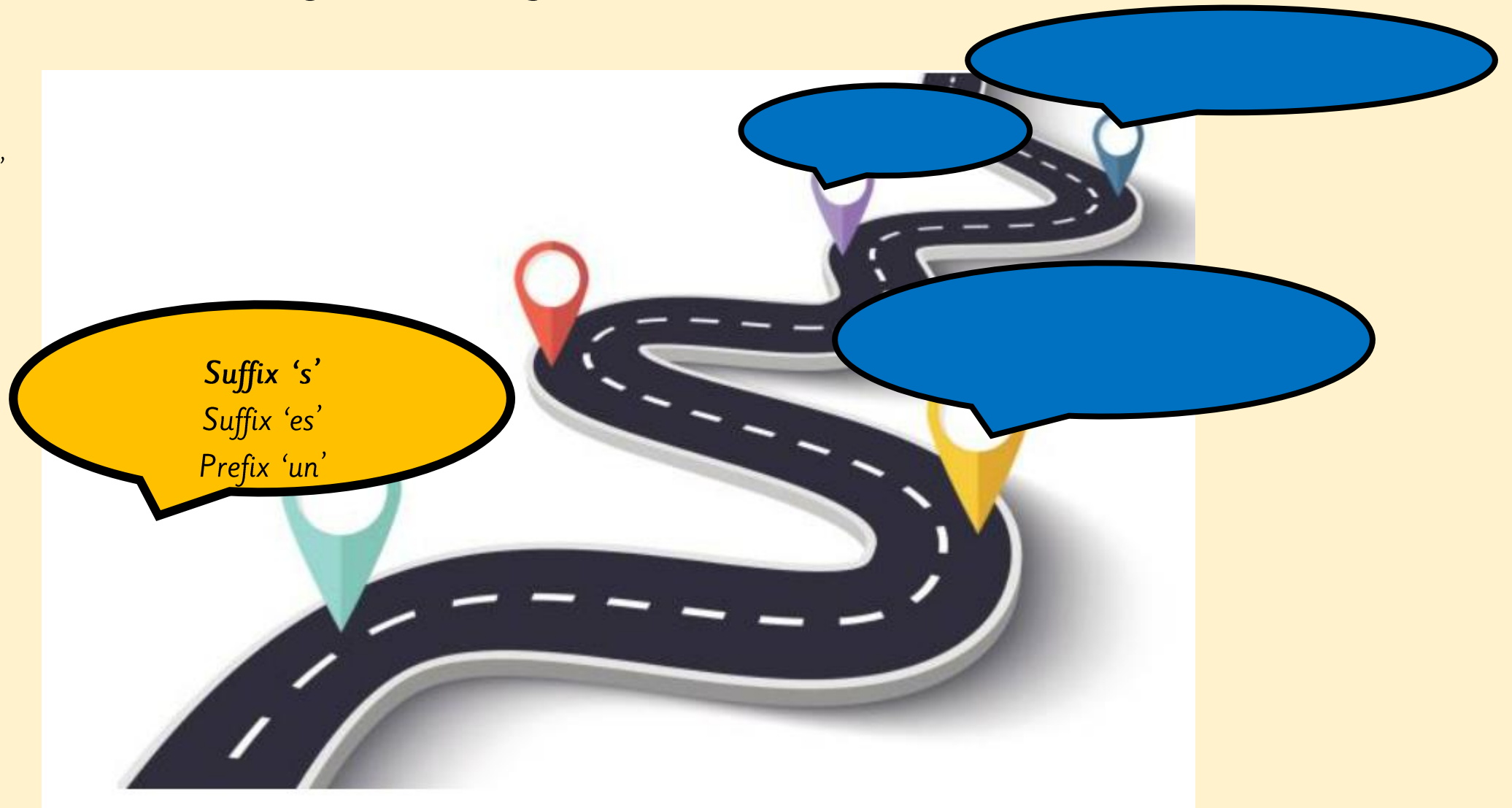


Our English Learning Journey

Key vocabulary:

Suffix 's' and 'es'



Suffix 's'
Suffix 'es'
Prefix 'un'

Monday 1st December 2025

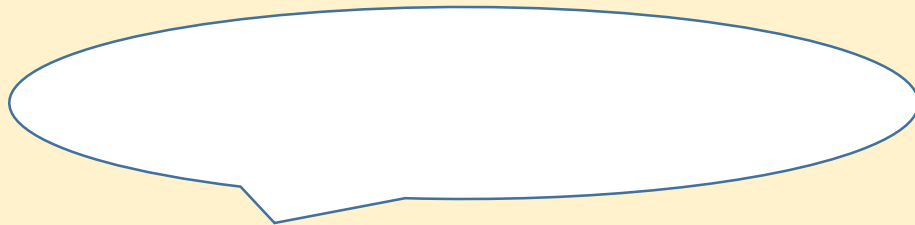
advice

To receive help or recommendations.

Sentence

“My mum gave me advice to help me tie my laces.”

TPs- Can you use it in a sentence?



Monday 1st December 2025



LQ: Can I add the suffix 'es'?



Steps to success

- *I can decode words.*
- *I can add the suffix 'es' at the end of the word.*
- *I can read the new word.*

Revisit

What is a suffix?

A **suffix** is a word ending that is added to the **end** of a root word. It changes the word and makes it **plural** (more than one).

Which word is plural?

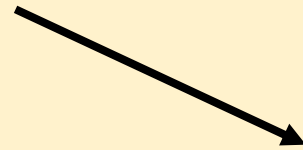
Pen

Pens

Revisit

Where does the suffix go?

Root word



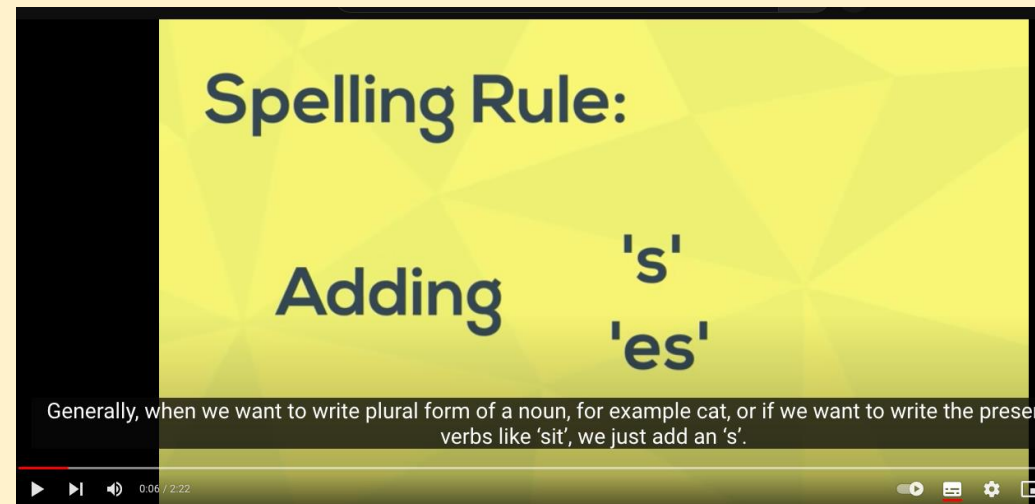
Lion

TP: the suffix goes at the _____ of the root word.

LQ: Can I add the suffix 'es'?

Monday 1st December 2025

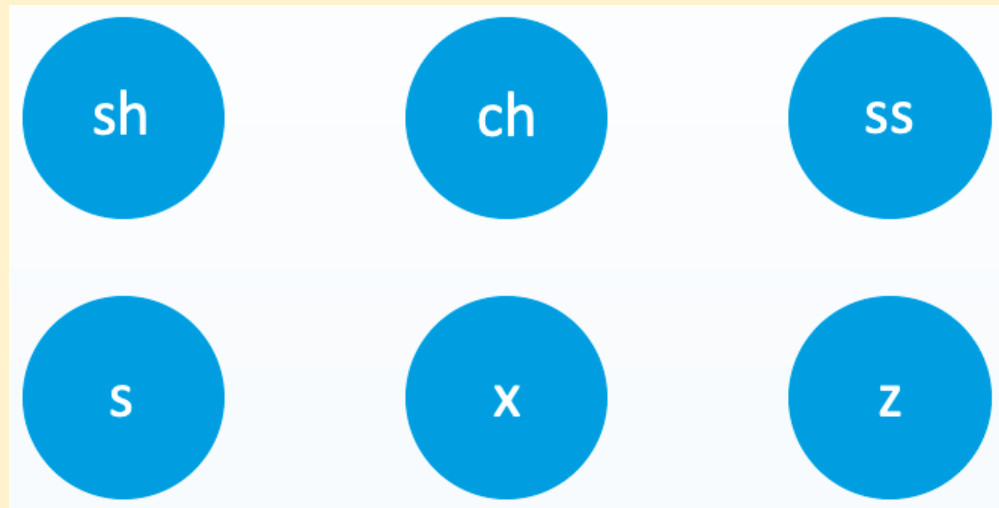
What is the spelling rule?



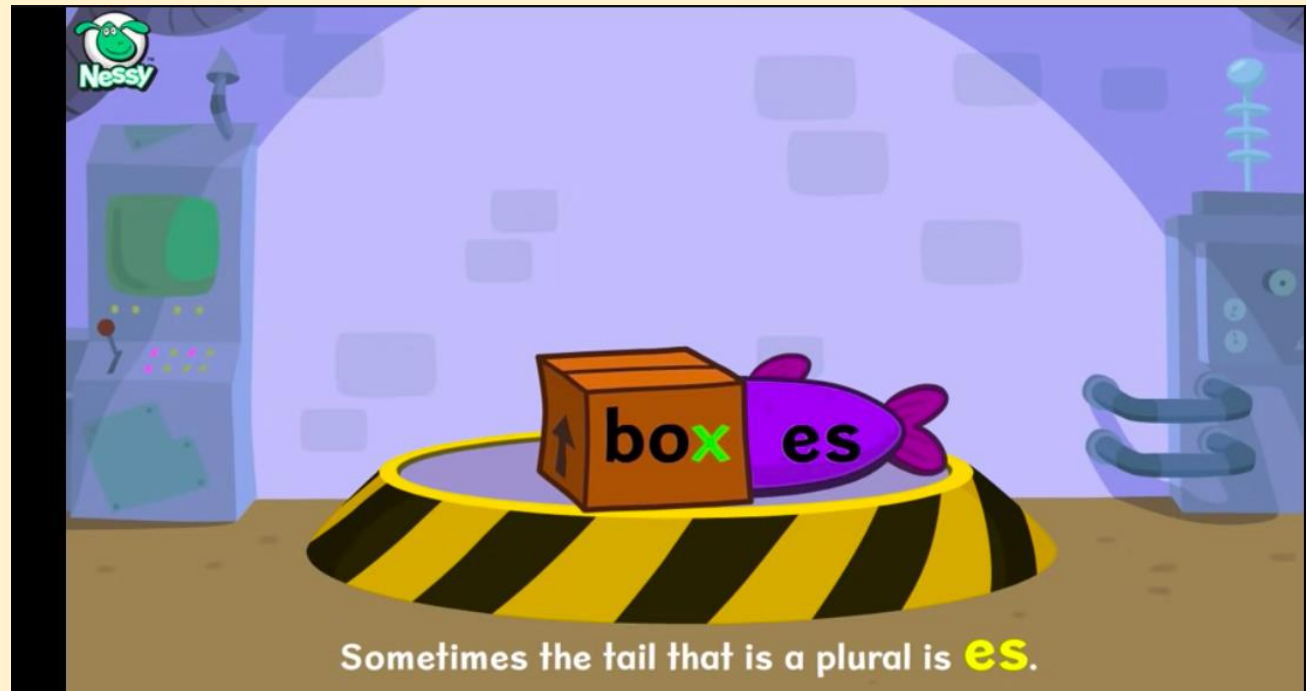
<https://www.youtube.com/watch?v=RhPubTi8GHQ>

Yesterday we focused on adding the suffix 's'. Today we will learn how to use another suffix 'es'.

Can you remember when we can use the suffix es?



Suffix 'es'



<https://www.youtube.com/watch?v=ID1OaD4FBqM>

LQ: Can I add the suffix 'es'?

Monday 1st December 2025

Add the suffix 'es'

TP: the plural is _____.

A church



Two churches



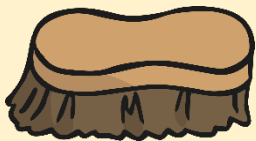
LQ: Can I add the suffix 'es'?

Monday 1st December 2025

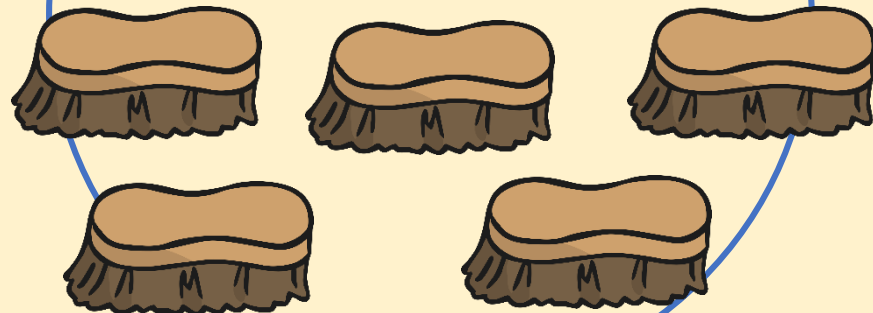
Add the suffix 'es'

TP: the plural is _____.

A brush



Lots of brush^{es}



LQ: Can I add the suffix 'es'?

Monday 1st December 2025

Add the suffix 'es'

TP: the plural is_____.

A glass



Four glasses



LQ: Can I add the suffix 'es'?

Monday 1st December 2025

Which words do we add
the suffix 'es' to?

bus

book

bench

Remember the rule!

TP: we add the suffix 's' to _____.

sh

ch

ss

s

x

z

LQ can I add the suffix 'es'?

Monday 1st December 2025

Which words do we add
the suffix 'es' to?

bus

buzz

shoe

Remember the rule!

TP: we add the suffix 's' to _____.

sh

ch

ss

s

x

z

Task

Today we will write the words for the pictures and add the suffix 'es' to change them to plural.

Self Assessment

Do you understand what you have to do?



Tuesday 2nd December 2025

Review

TP: What suffix can I add to the word dog to show that I have more than one?



dog



dogs



LQ: Can I sort the suffixes 's' and 'es'?



Steps to success

- *I understand singular and plural.*
- *I can sort the suffixes 's' and 'es' correctly*
- *I know the suffix rule*

Star Words



root word



suffix

'es 'or 's'

singular



plural



LQ: Can I sort the suffixes 's' and 'es'?

On Monday and Tuesday we learnt about the suffixes 's' and 'es'.

TP : When do we add the suffixes 's' or 'es'?

We add these suffixes when there is more than one thing.

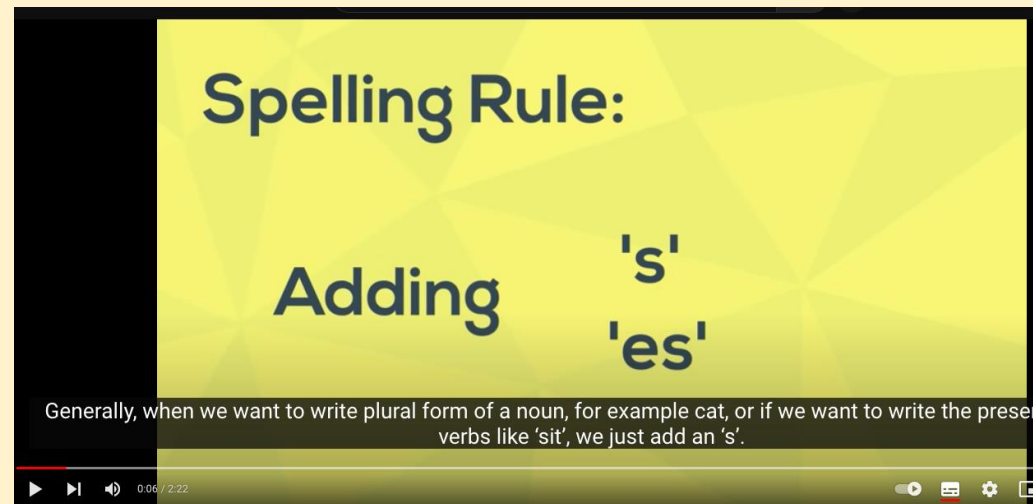
TP: Can you remember when we do not add 's' for more than one thing?

Let us have a look at the rules:

LQ can I add the suffixes 's' and 'es'?

Tuesday 2nd December 2025

What is the spelling rule?



<https://www.youtube.com/watch?v=RhPubTi8GHQ>

I have one shirt



Now I have _____



TP: What do I have now and what suffix should I use?

I found a fox



Now there are _____



TP: What do I have now and what suffix should I use?

Task

On your tables there are pictures and words ending with the suffixes 's' and 'es'. With your partner sort them out, matching them with the correct suffix.

Self assessment

Do you understand the task?



Wednesday 3rd December 2025



LQ: Can I use prefix 'un'?



Steps to success

- *I know what the prefix 'un' means.*
- *I know how to write the prefix 'un'.*
- *I can write the new word.*
- *I can explain how the prefix changes the word.*

Star Words



root word



prefix

Prefix + Word = New Word		
dis	connect	disconnect
re	do	redo
co	exist	coexist

'un'

Prefix un- Word Mat		
unable	unfamiliar	unpack
unafraid	unfinished	unpleasant
unbearable	unfortunate	unsafe
unbelievable	unfortunately	untidy
uncertain	unhappy	untie
uncomfortable	unhelpful	untrue
uncover	unkind	unusual
undo	unknown	unwanted
unexpected	unlock	unwell
unfair	unlucky	unwilling



LQ: Can I use prefix 'un'?

Wednesday 3rd December 2025

Let us have a look at this video



<https://www.youtube.com/watch?v=jvRq1BgwpVE>

TPs: What do all of these words have in common?

unhappy

undo

unkind

unable

They all begin with the prefix 'un'.

What does the prefix 'un' mean?

unhappy

not happy

unkind

not kind

untrue

Something that is false or incorrect

It means 'not' or the opposite of something.

Can you add an 'un' to the beginning of these words to make new ones?

lucky

unlucky

well

unwell

fair

unfair

It means 'not' or the opposite of something.

Self assessment

Do you understand what the prefix
'un' means'?



Add one of these 'un' words to complete each sentence:

unhappy

unkind

unhealthy

unwrap

It is _____ to eat too much chocolate.

It is _____ to call people names.

At Christmas, I _____ my presents.

I was very _____ when my friend moved schools.

Task

Now lets use our word bank and re-write the new word adding the prefix on the grid (below). Remember to read the new word to make sure it makes sense.

Challenge: Write sentences using the new words.

E.g. 'I was unhappy when I lost my teddy bear.'

Write the root word from the word bank and add the prefix 'un' to make the new word.

kind	lock	lucky	fair	wrap
well	healthy	clear	true	safe
pack	cover	fold	happy	

NS - Now write a sentence with the new words.

Root words

Add prefix 'un' to make new words

Prefix word bank



Root words

Add prefix 'un' to make new words

Self assessment

Do you understand the prefix task?



Thursday 4th December 2025-
Church Trip

Friday 5th December 2025



LQ: Can I consolidate my learning?



Steps to success

- *I can consolidate my learning*
- *I know what the prefix 'un' means.*
- *I can change singular words to plural using the suffixes 's' and 'es'*
- *I can write the new word*

Star Words



root word

prefix

'un'



Prefix + Word = New Word		
dis	connect	disconnect
re	do	redo
co	exist	coexist

Prefix un- Word Mat		
unable	unfamiliar	unpack
unafraid	unfinished	unpleasant
unbearable	unfortunate	unsafe
unbelievable	unfortunately	untidy
uncertain	unhappy	untie
uncomfortable	unhelpful	untrue
uncover	unkind	unusual
undo	unknown	unwanted
unexpected	unlock	unwell
unfair	unlucky	unwilling

plural 'es' or 's'

singular



LQ: Can I consolidate my learning?

Friday 5th December 2025

Today we are going to consolidate our learning for this week. This is to make sure that we understand how the suffixes 's' and 'es' changes the words from singular to plural and how adding the prefix 'un' changes the meaning of the word.

Let us remind ourselves how they work:

What is a suffix?



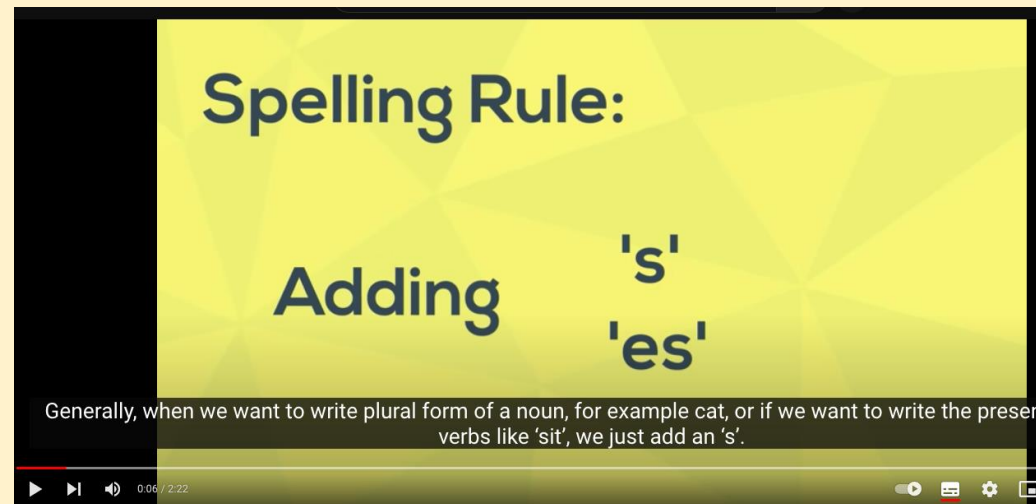
<https://www.youtube.com/watch?v=duZ-eu0aI7E>

A **suffix** is a word ending that is added to the **end** of a root word. It changes the word and makes it **plural** (more than one).

Friday 5th December 2025

LQ: Can I consolidate my learning?

What is the spelling rule?



<https://www.youtube.com/watch?v=RhPubTi8GHQ>

LQ: Can I consolidate my learning?

Friday 5th December 2025

Let us have a look at this video

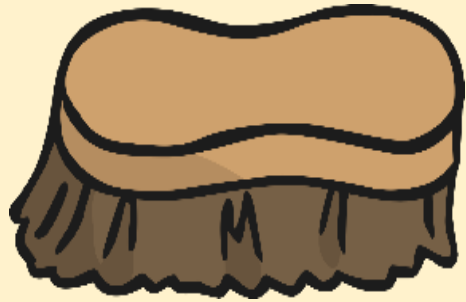


<https://www.youtube.com/watch?v=jvRq1BgwpVE>

LQ: Can I consolidate my learning?

Friday 5th December 2025

TP: What can you add to these words to show that it is plural (more than one)?



's' or 'es'

Brush to _____



Train to _____

LQ: Can I consolidate my learning?

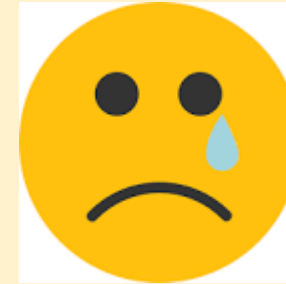
Friday 5th December 2025

TP: Where should we place the prefix 'un' to change the meaning of the words?

Happy



unhappy



Lucky



unlucky



Clean



unclean



Task

On your table there are some words and pictures. Read and match the root words to the correct suffixes 's' and 'es'. With your partner change the root word using the prefix 'un' to change the meaning of the words.

Self assessment

Do you understand what you are being asked to do task?

