

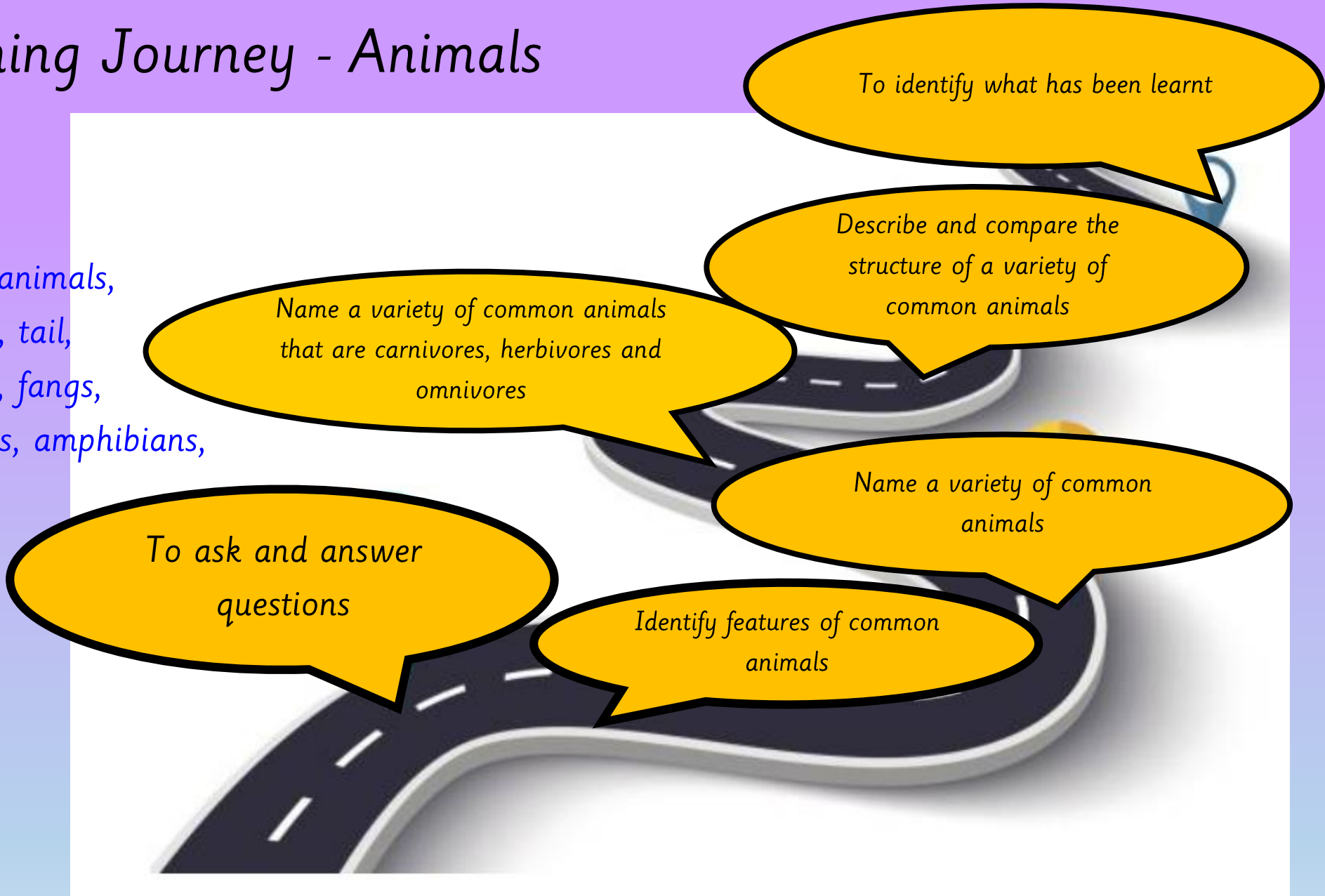


*Animals including Humans – Animals*  
*Week 6*

# Our Science Learning Journey - Animals

## Key vocabulary:

Animals – names of different animals, food, behaviour, pattern, legs, tail, fin, scales, eyes, claws, wings, fangs, beaks, ears, reptiles, mammals, amphibians, birds, fish, invertebrates, vertebrates, carnivores, herbivores, omnivores, meat, plants, compare, similarities, differences



Review



[Herbivores | Carnivores | Omnivores | Types of Animals \(youtube.com\)](#)



*TPs: What is the difference between carnivores, herbivores and omnivores?*



LQ: Can I identify what I have learnt about animals?

## Steps to Success

*All: I can name the animal groups.*

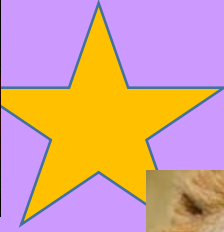
*Most: I can identify the three animal diets.*

*Some: I can describe the difference between vertebrates and invertebrates.*





Animals



# Star words



Classify/group



Tail



Fangs



Beak



Scales



Horns



Wings



Whiskers

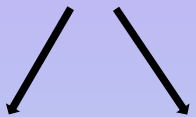


Mammal



Bird

Ears



Reptile



Amphibian



Insects



Carnivores



Omnivores



Herbivores

# TPs: What have you learnt about animals?

Sentence starter:

*I know that...*



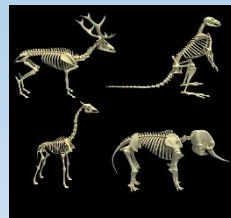
**Recap**

**TPs: What is the difference between vertebrates and invertebrate?**

**Vertebrates**



Vertebrates have backbones. They have a skeleton inside the body.



**Invertebrates**



Invertebrates do not have backbones. They have a soft body. Some animals have a hard shell on the outside to protect their soft body.

1

What is this animal part?

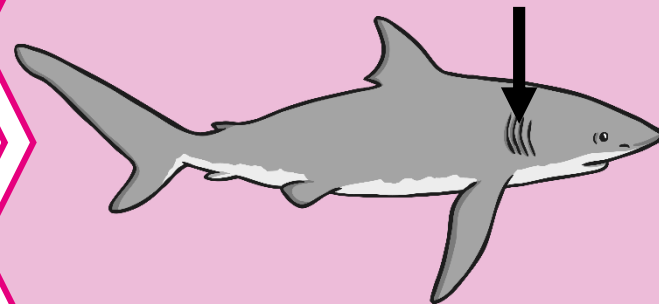
A gills



B leg



C eye



2

What is this animal covered in?

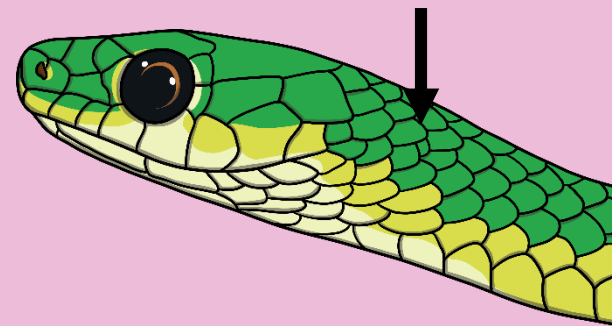
A fur



B scales



C feathers



3

Which group does this animal belong to?

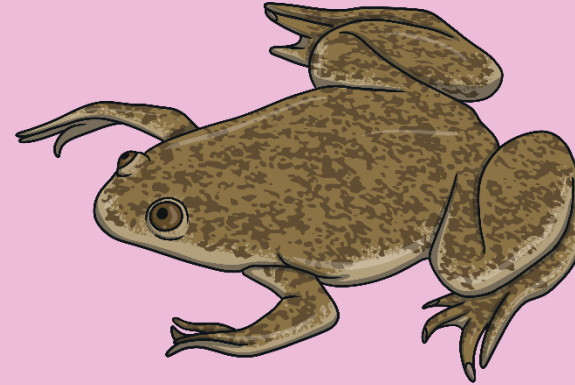
A fish



B amphibian



C reptile



4

Which group does this animal belong to?

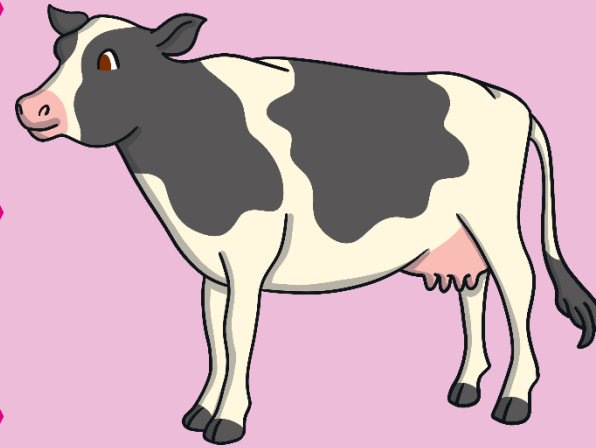
A mammal



B bird



C reptile



5

Which group does this animal belong to?

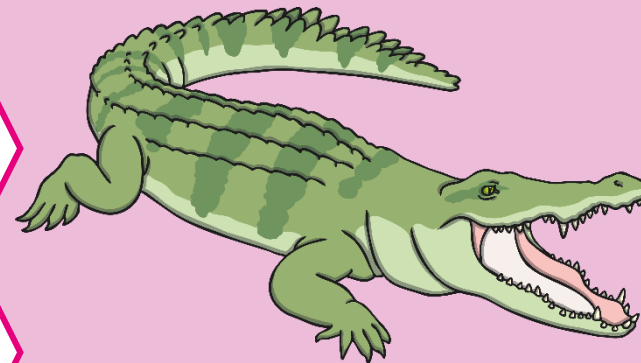
A amphibian



B reptile



C fish



6

Is this animal an omnivore, herbivore or carnivore?

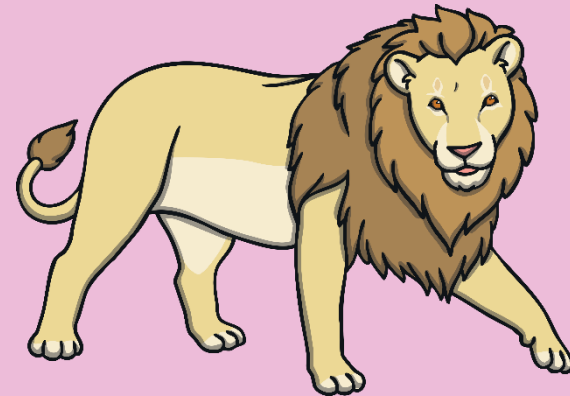
A carnivore



B omnivore



C herbivore



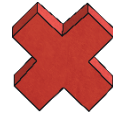
7

Is this animal an omnivore, herbivore or carnivore?

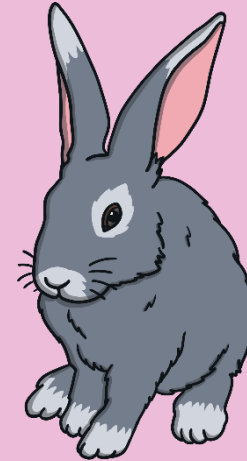
A herbivore



B omnivore



C carnivore



LQ: Can I identify what I have learnt about animals?

# Task - Assessment

Self assessment

Do you understand the task?



Now answer these questions in your books.  
Remember to use the star words to help you!

## Questions:

1. Can you name the animal groups?
2. What is the name given to animals that eat meat?
3. What is the name given to animals that eat plants?
4. What is the name given to animals that eat both plants and meat?
5. Describe the structure of a vertebrate?
6. Describe the structure of an invertebrate?

## STAR WORDS



Reptile



Amphibian



Mammal



Bird



Insects



Fish



Carnivores



Omnivores



Herbivores

Without bones



Skeleton inside the body

