

Our Geography Learning Journey

Key vocabulary:

Map

Symbols

Aerial view

Field work

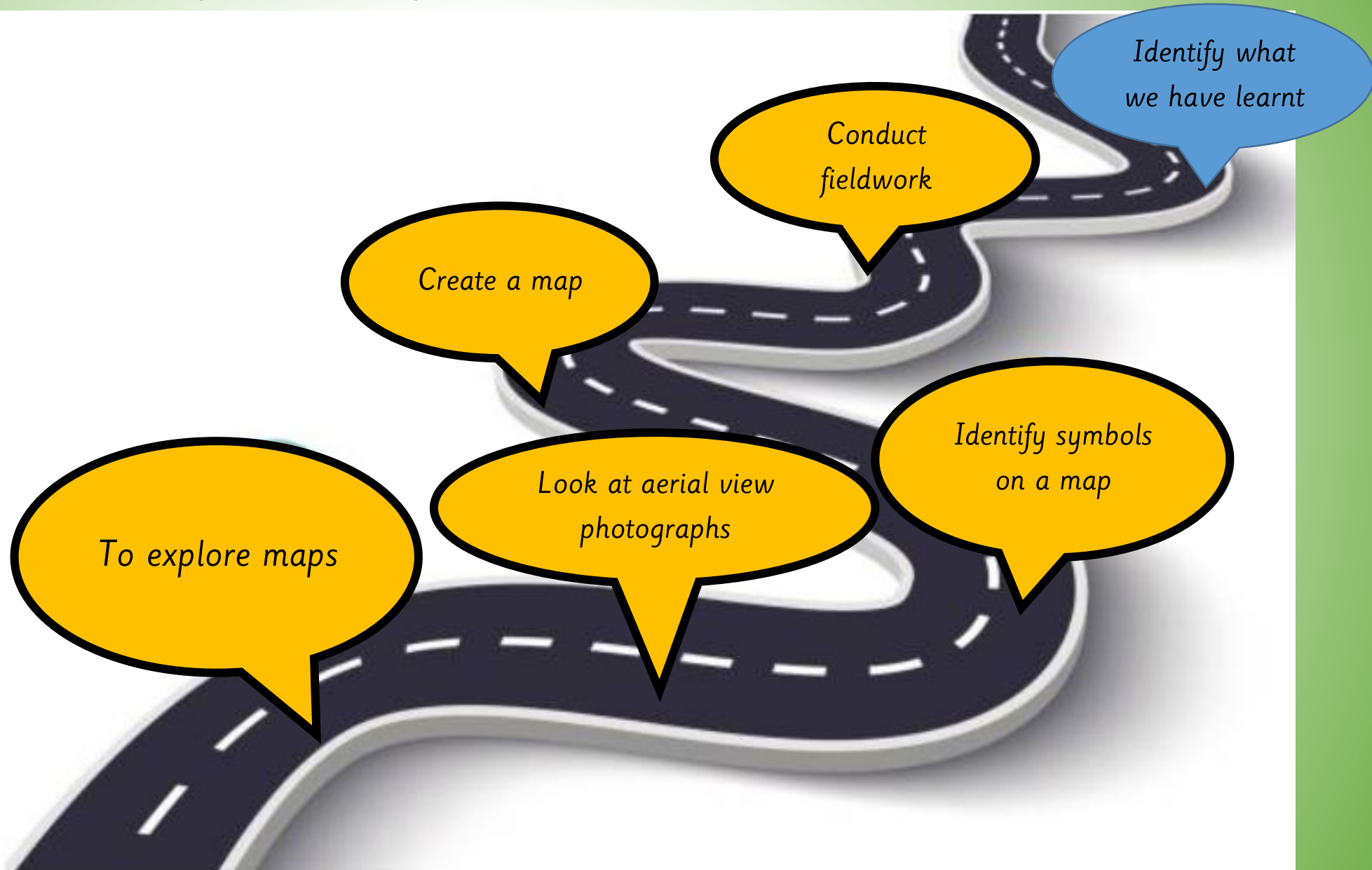
Human feature

Physical feature

Travel

Birds eye view

Ground View



Tuesday 17th March 2026



LQ: Can I conduct field work?

Steps to Success



All – I can observe the school grounds.

Most – I can identify some human and physical features

Some – I can suggest ways the school could improve.

LQ: Can I conduct field work?

Tuesday 17th March 2026



STAR WORDS



physical feature



human feature



field work



school grounds



LQ: Can I conduct field work?

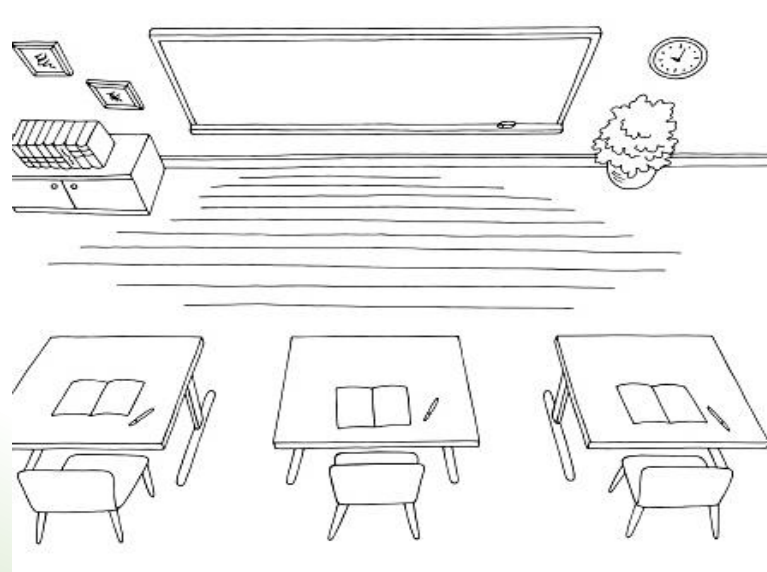
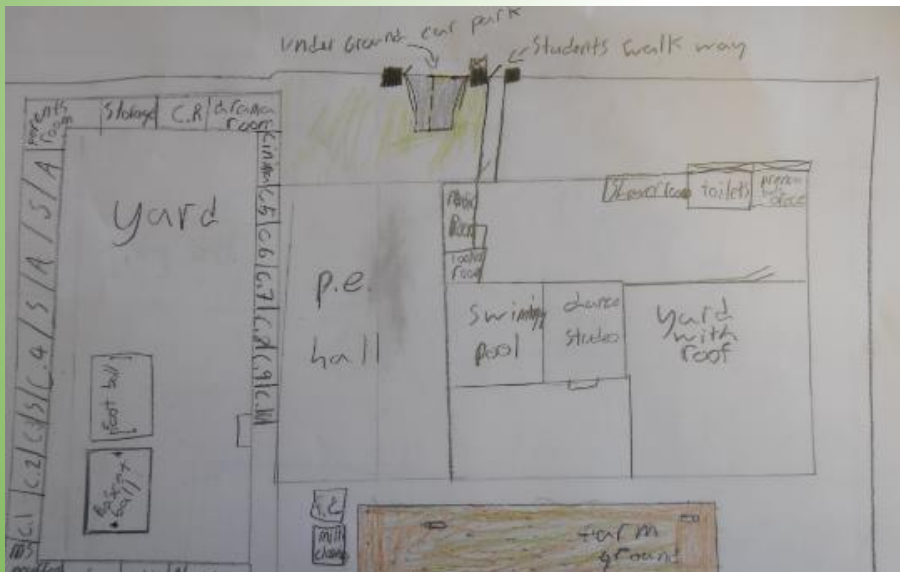
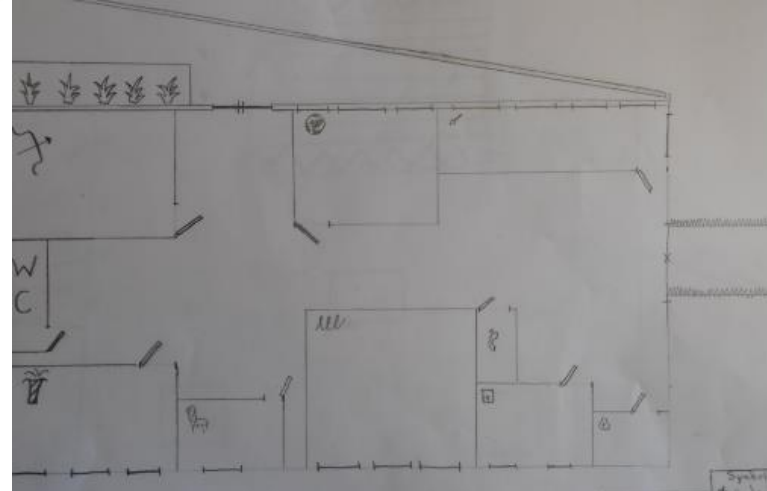
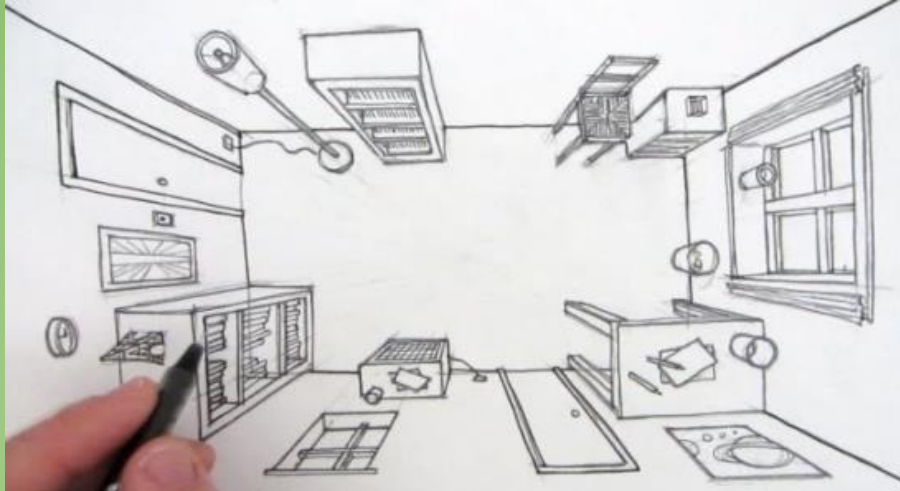
Tuesday 17th March 2026

TPs- What did we do last week?

How did you draw your map?

Was your map ground view or aerial view? Why?

What else did you have on your map? Why?



LQ: Can I conduct field work?

Tuesday 17th March 2026



This week we will be conducting field work.

Geographers conducts field work to investigate an area, land or site to find out more information about it .



LQ: Can I conduct field work?

Tuesday 17th March 2026

Let's have a look at this video. It will help us to understand what field work is.



TPs:

What information were they looking for? What did they find out?

<https://www.bbc.co.uk/bitesize/topics/zqj3n9q/articles/zr6nscw>

LQ: Can I conduct field work?

Tuesday 17th March 2026

Question: Does our school have more physical features or more human features?

Today we are going to explore the physical and human features in our school grounds.

Human features

Human features are things that have been made by humans or machines. Things such as shops, churches, hospitals, cars and playgrounds.

TPs: What are some other human features?



LQ: Can I conduct field work?

Tuesday 17th March 2026

Physical features

Physical features are things that are naturally here on earth, things that were not made by humans or machines such as rocks and the ocean.

TPs: What other physical features can you think of?



LQ: Can I conduct field work?

Quiz

Human or Physical?



*This waterfall is a **physical** geographical feature.*

LQ: Can I conduct field work?

Quiz

Human or Physical?



*This motorway is a **human** geographical feature.*

LQ: Can I conduct field work?

Quiz

Human or Physical?



*These beach huts are a **human** geographical feature.*

LQ: Can I conduct field work?

Quiz

Human or Physical?



*This mosque is a **human** geographical feature.*

LQ: Can I conduct field work?

Quiz

Human or Physical?



*These towers of rock are a **physical** geographical feature.*

LQ: Can I conduct field work?

Quiz

Human or Physical?



*This lighthouse is a **human** geographical feature.*

LQ: Can I conduct field work?

Quiz

Human or Physical?



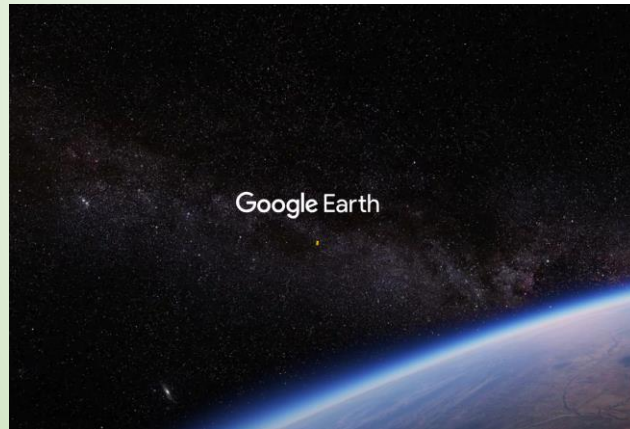
*This train station is a **human** geographical feature.*

LQ: Can I conduct field work?

Tuesday 17th March 2026

We are going to explore Google Earth and type in different locations in street view:

<https://earth.google.com/web/>



Croydon Town Centre, McDonalds Thornton Heath,
mount fuji (volcano), Brighton beach and Kenya.

TPs: What human features can you see?

What physical features can you see?

Self Assessment

Do you understand what human and physical features are?

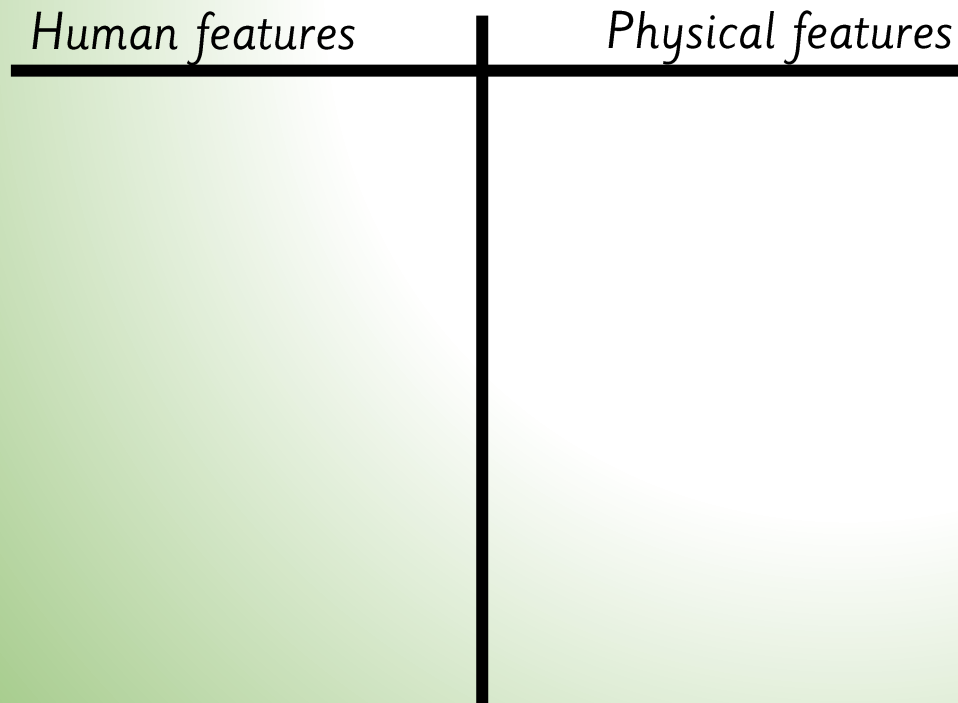


LQ: Can I conduct field work?

TASK

Tuesday 17th March 2026

You are going to carry out your own field work around the school grounds. Identify the human and physical features within our school environment and write them in your book.



Draw a line in your book, on one side write human features on the other side write physical features.

Self Assessment

Do you understand the task?



Assessment

- *All: I know the use of maps.*
- *Most: I know why maps have symbols.*
- *Some: I can identify human and physical features in our local environment.*

1. *What type of 'view' is a map in?*
2. *Why do we use maps?*
3. *What is the difference between aerial view and ground view?*
4. *Why do maps have symbols?*
5. *Name a human feature in your school.*
6. *Name a physical feature in your school.*