

Our Geography Learning Journey

Key vocabulary:

Map

Towns

City

Village

Human feature

Physical feature

United Kingdom

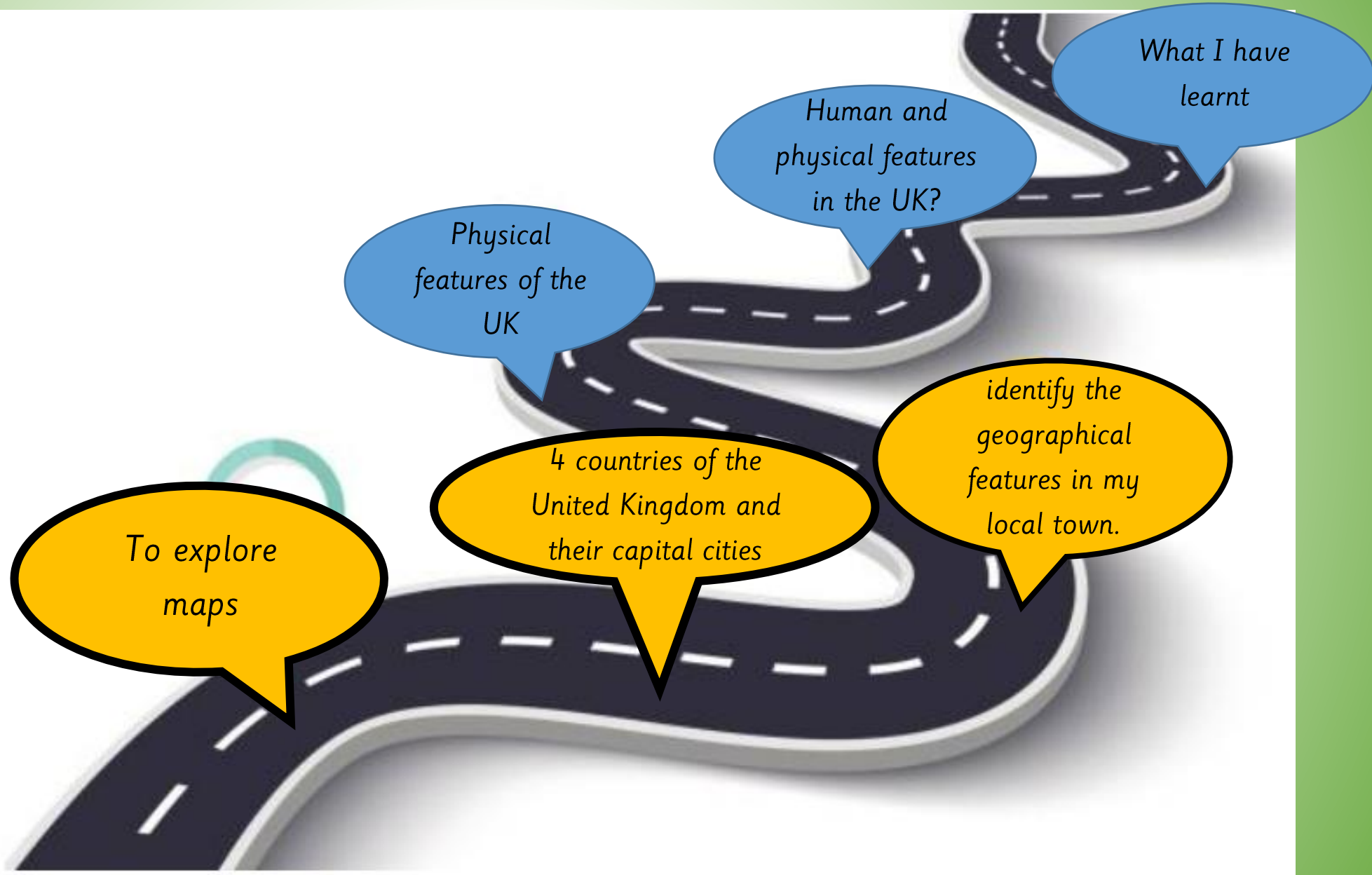
England

Scotland

Northern Ireland

Wales

Capital cities





LQ: Can I identify the geographical features in my local town.

Steps to Success



All: I can name the 4 countries of the United Kingdom and the capital cities.

Most: I can discuss what a valley, village and town is.

Some: I can explain the similarities and the differences between a village, valley and a town?

STAR WORDS



city



town



village



map of United Kingdom / UK



countries



Recap



Where is Scotland?

Where is Wales?

Where is England?

Where is Northern Ireland?

What is the capital city of England? What is the capital city of Scotland? What is the capital city of Northern Ireland? What is the capital city of Wales?

We live in the **United Kingdom (UK)**, which is made up of **4 smaller countries**. Do you remember the 4 countries in the United Kingdom and their capital cities?



A capital city is the home to the government and ruler of a country.

<https://www.bbc.co.uk/teach/class-clips-video/geography-ks1-ks2-the-united-kingdom/zhtgrj6>

England



London

Northern Ireland



Belfast

Scotland



Edinburgh

Wales



Cardiff

<https://www.bbc.co.uk/teach/class-clips-video/geography-ks1--ks2-cities-towns-villages/zjn492p>

village



- Small settlement
- Few 100 people
- Farms
- Countryside's
- A place of worship
- A few shops.

A village – a village is a community made up of a small number of houses, usually in a country area. A village is bigger than a **hamlet** but smaller than a town or city. The number of people can range from a few hundred to a few thousand.

A hamlet is a very small settlement with just a group of houses.



town



- Larger settlement
- A few thousand
- More shops and more homes
- Leisure facilities
- Town hall
- Schools

A town – a town is a larger area with streets, more houses, and buildings such as shopping centre, primary schools and leisure facilities. A town is larger than a village but usually smaller than a city, usually home to a population of a few thousand people.



city



A city – a city is the largest type of settlement, containing lots of buildings and lots of people. They usually have hospitals, sports facilities, universities, shops, offices, many houses and often a cathedral.

- Bigger settlement
- Millions of people
- Lots of houses, flats, apartments
- Lots of shops
- Lots of cinemas
- Lots of restaurants
- Museums
- schools
- Very busy



LQ: Can I identify the geographical features in my local town.

Monday 27th May 2026

TP: What kind of settlement is Thornton Heath and why? Is it a city, a town, or a village? How do you know?



Self Assessment
Do you understand what the similarities and the differences between a village and a town?
👍 👉 👎

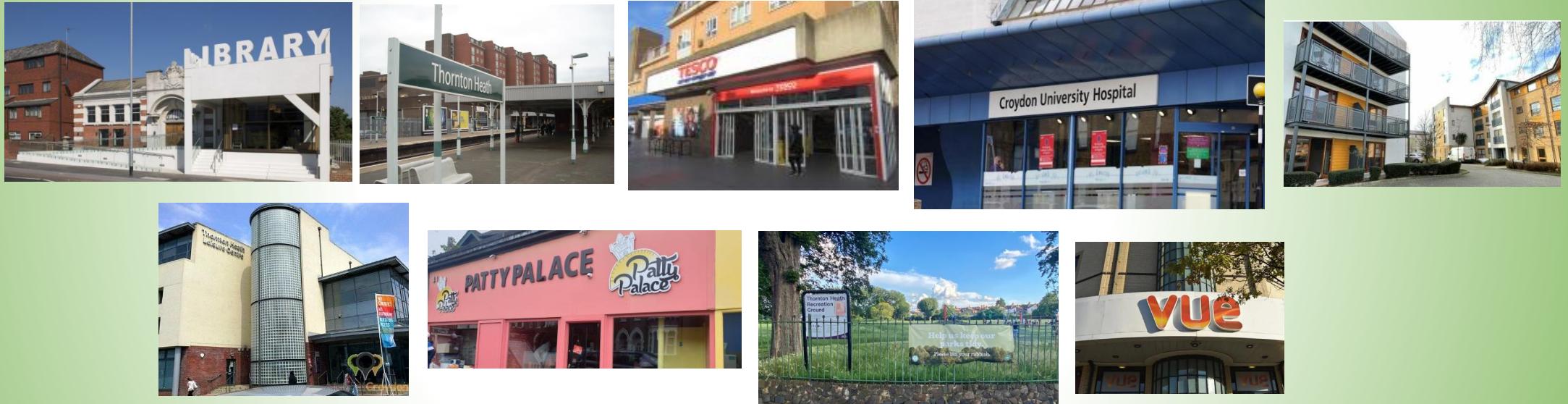
LQ: Can I identify the geographical features in my local town.

Monday 27th May 2026

TASK

Children to choose and draw a feature of Thornton Heath.

Write sentences/words to describe the feature.



NS

EXP/GD: What is a village?

WTS: What is a town?

SEN: Have 2 pictures stuck in. Chn to circle the correct one. **Which picture shows a town?**

Self Assessment

Do you understand the task?



Assessment:

All: To name and label the 4 countries and capital cities in the UK.

Most: To be able to identify human and physical features of the UK.

Some: To be able to discuss the similarities and differences between human and physical features.

1. What country do you live in?
2. What are the 4 countries that make up the United Kingdom?
3. What are the capital cities of the 4 countries?
4. What are human features?
5. What are physical features?
6. What are the seas around the UK called?
7. What is a village?
8. What is a city?