



Welcome Parents and Carers

Year 1

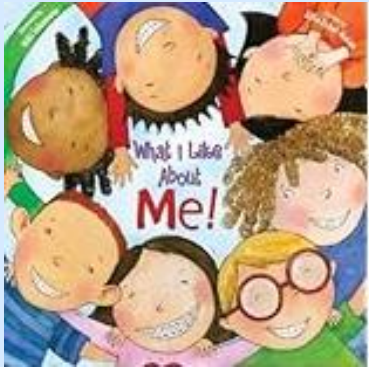
Topics and coverage during the
Summer 1 half term.

Year 1 topics

This is where we
are right now.



Incredible
Me



Superheroes



Paws Scales
& Tails



Let's explore



Bright Lights,
Busy City



Sensational
Skies



We use these topics as a stimulus for cross-curricular teaching.

Our current topic

Bright Lights, Busy City



This is the over-arching theme.

This half term we are taking the children to London as part of our WOW day experience. We will use this experience to support teaching in other areas of the curriculum e.g. English, Geography and Art.

English

We will be learning:

Write a recount- Visit to London

English Objectives

- Identify features of non-fiction text
- Sequence events
- Writing in the first person
- Factual writing



SPAG:

- Time adverbials (time conjunctions)
- Exclamation marks
- Verbs
- Capital letters and full stops

meanwhile first last
next then finally
eventually this evening
last week after a
while soon afterwards
meanwhile






Phonics



We follow the Little Wandle letters and sounds' programme. This half term we are continuing to learn the **phase 5 sounds**, 'growing the code', learning new diagraphs and alternative sounds.

The children will learn the different letters that make one sound as well as the different sounds a group of letters can make.

 ai ay a a-e eigh aigh ey ea	 ee ea e e-e y ey	 igh ie i i-e y	 oa o o-e ou oe ow	 oo ue u-e ew ou ui
 or aw au aur oor	 ur er ir or	 ow ou	 oi oy	 ear ere eer

Year 1 Phonic Screening Check

Monday 8th June – Friday 12th June

Year 1 phonic screening check will start on this date and will be carried out throughout the week. Your child will be assessed on reading alien words(words that are made up) and real words.

Please help your child to use their phonic skills to practise reading the words.

You can find the practise booklets on these websites

<https://www.gov.uk/government/publications/phonics-screening-check-2023-materials>

<https://www.gov.uk/government/publications/phonics-screening-check-2022-materials>



Year 1 Phonic Screening Check

Monday 8th June – Friday 12th June

Please use this link to play phonic games with your child to help them identify and read real words and fake words (made up words).

PhonicsPlay – Resources



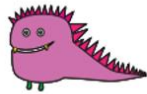
Each week your child will take home an additional phonics homework pack to practise reading alien words (made up) and real words. Help your child to identify the diagraphs, trigraphs and split diagraphs within the words.

Year 1

Mock Phonic Screening Check Practise Paper 1

*Please help your child to practise the real and alien words to prepare them for the Phonic Screening Check starting on **Monday 9th June.***

bem



besh



dax



quab



kig



barp



eld



chell



print

visit

clouds

fabric

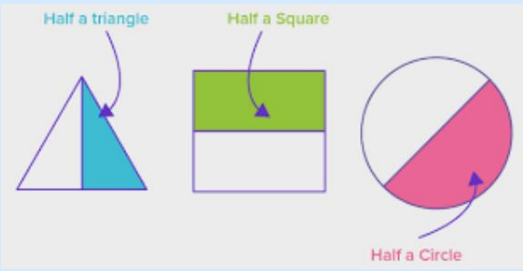
spree

trapeze

stroke

concrete

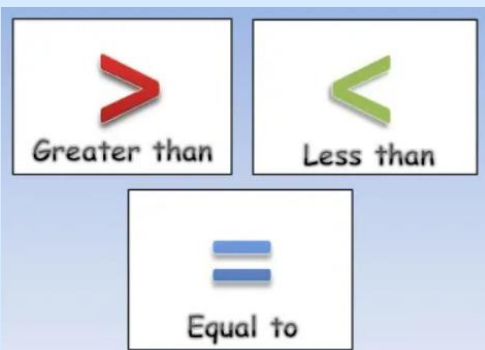
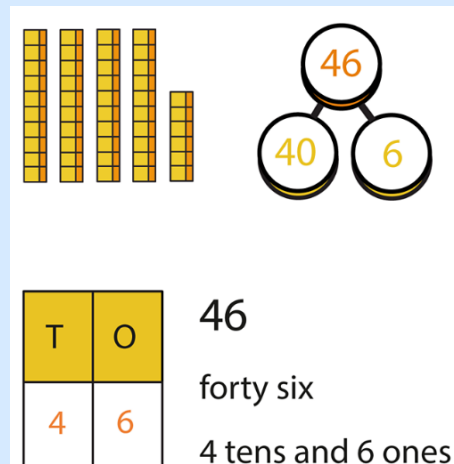
Maths



In Maths this half term we will be focusing on:

Fraction - Halves and Quarters, Position and Directions and Place value - Numbers to 100

- Finding whole, halves and quarters of shapes and amounts
- Describe turns
- Describe positions
- Count to 100
- Explore number patterns
- Partition numbers, understanding tens and ones
- Compare numbers
- Order numbers
- Number bonds to 100



Real life objects



Maths resources

We will be using the following resources to help us with our learning:

Counters



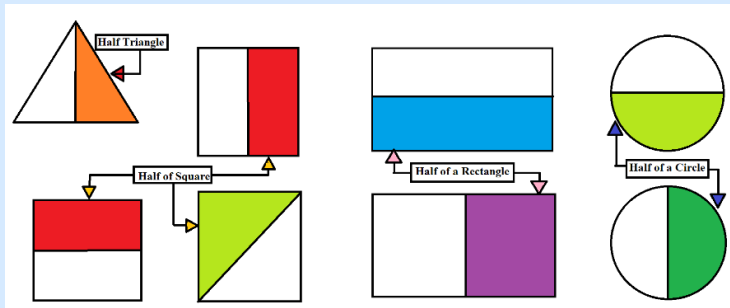
Counting beads



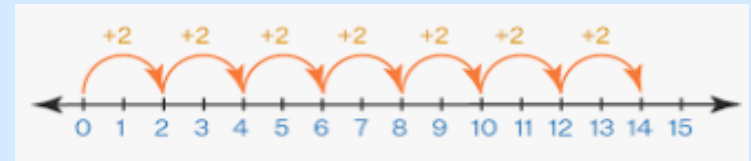
100 square grid

1	2	3	4	5	6	7	8	9	10
11	12	13	14	15	16	17	18	19	20
21	22	23	24	25	26	27	28	29	30
31	32	33	34	35	36	37	38	39	40
41	42	43	44	45	46	47	48	49	50
51	52	53	54	55	56	57	58	59	60
61	62	63	64	65	66	67	68	69	70
71	72	73	74	75	76	77	78	79	80
81	82	83	84	85	86	87	88	89	90
91	92	93	94	95	96	97	98	99	100

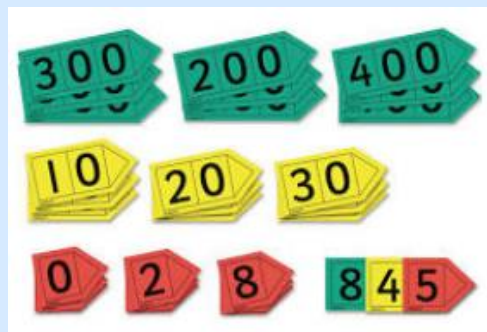
2D shapes - halves



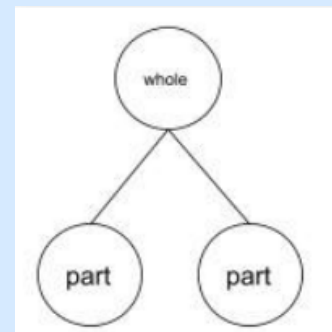
Number line



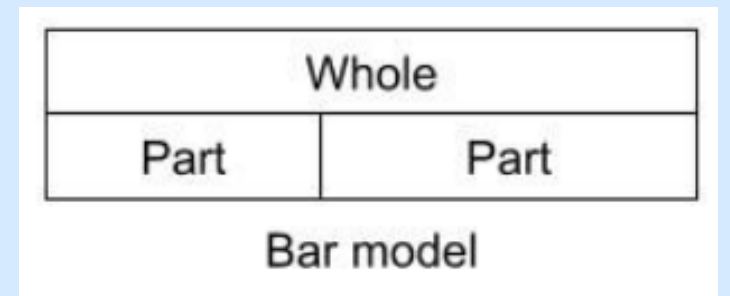
Place value cards



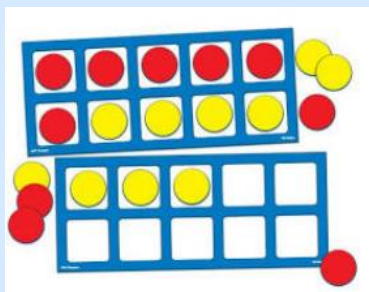
Part-whole model



Bar model



10 frame



Maths Vocabulary

Fraction – whole, half, halves, quarter, quarters

Position & Direction - turn, position, direction, half turn, quarter turn, three-quarter turn, whole turn, left, right, in between, forwards, backwards, above, below, top, middle, bottom, up, down

Place value - 100, number square, pattern, sequence, fewer, smaller, less than, greater than, equal to, (=) greatest, biggest, fewest, smallest, tens, ones, place value, place value grid, partition, how many?, count, number bonds to 100

Science

This half term's Science topic is **Plants**.

During this topic the children will:

- Describe the structure of a plant.
- Identify and name a variety of common plants.
- Observe, identify and compare evergreen and deciduous trees.



Key vocabulary

*plant, wild plant, garden plant,
tree, deciduous, evergreen, plant
parts, root, stem, flower, leaves,
anther*



Geography

Locality and the four countries of the United Kingdom



This half term's Geography topic will further develop the children's understanding of locality using geographical language. During this topic they will learn the names of the four countries of the United Kingdom and their capital cities and identify geographical features such as roads, villages, towns, cities and human & physical features.



Key vocabulary

geographical features rural area urban area countryside
town city village similarities differences England
Wales Northern Ireland Scotland Belfast Edinburgh
London Cardiff map



Art

This half term's Art topic is **Transient Art and Collage.**

This topic will explore different techniques and creative ways to make art, using natural material and collage resources. They will explore artwork created by the artists **Vincent Van Gogh** and **Laurence Stephen Lowry** and use their work as a stimulus to create their own artwork





RE

This term's R.E topic is all about **Celebrations**

The children will explore different religious festivals and celebrations. They will learn what different religions do to prepare for celebrations and festivals.



Physical Education (PE)



This half term the children will learn–**Athletics**

Children will learn:

- To further develop hand eye coordination, gross motor skills and aim
- To develop their understanding of sportsmanship and working as a team
- To recognise what is successful
- They will take part in relay races, sprints, press pushes, throwing and jumping





Personal, Social, Health Education (PSHE)

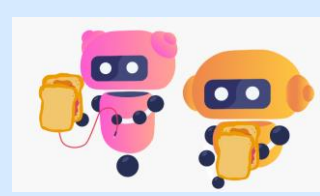


This term's PSHE topic is **Relationships**.

- To tell when they feel cared for
- To tell when they care or love someone
- To discuss when they feel jealous and how to deal with that feeling
- To discuss how they feel when they lose someone or something they care about



Computing



This topic in Computing this term is:

Programming - Algorithms

The children will learn to write clear algorithms.

- Recognise cause and effect when pressing buttons on a Bee-Bot
- Discuss and demonstrate how the Bee-Bot works
- Record video ensuring everyone is in the shot
- Give a number of clear instructions in sequence
- Program a Bee-Bot to reach a destination
- Identify and correct mistakes in their programming



Other Information

Spellings

- A list of Year 1 high frequency and common exception words have been sent home last half term.
- They must learn how to read and spell these words correctly by the end of Year 1!
- Practise, practise, practise! Let us know if you need another copy.

Maths

- Children will be ordering, counting and sorting numbers to 10,20,50.
- Encourage them to count forwards and back in 1's up to 50
- Use their number knowledge to add and subtract numbers within 20.
- Encourage them to represent numbers in different ways – drawing, using objects and arranging them in different ways.

Homework

- Homework
- Children will receive handwriting homework every Friday
- They must practise and complete the letters given
- They will take home phonics homework with the new phonemes they have learnt each week
- You can also find the phonemes, words corresponding to the sounds and tricky words on the weekly newsletter



Questions or queries?

You are still able to email your child's class teacher directly.

Browne class: Browneclass@winterbourne-inf.croydon.sch.uk

Kerr class: Kerrclass@winterbourne-inf.croydon.sch.uk

Rosen class: Rosenclass@winterbourne-inf.croydon.sch.uk

McKee class: Mckeeclass@winterbourne-inf.croydon.sch.uk