



Welcome Parents and Carers

Year 2

Topics and coverage during the Summer 1 half term.

Year 2 Topics

This is where we are right now.



Autumn 1



Discover and
Determination

Autumn 2



Hardworking
Humans

Spring 1



Fire! Fire!

Spring 2



Street
Detectives

Summer 1



Sand, Sea and
Sun

Summer 2



Joyful
Journeys

Our current topic

Sand, Sea & Sun

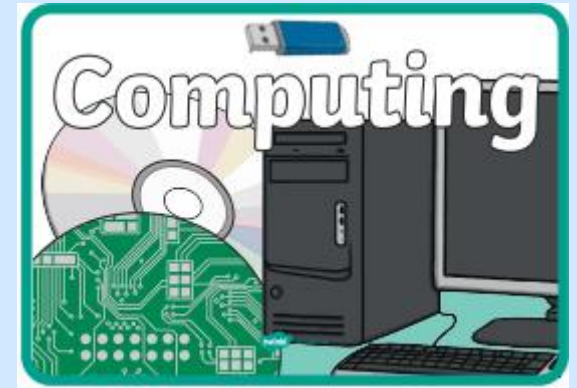
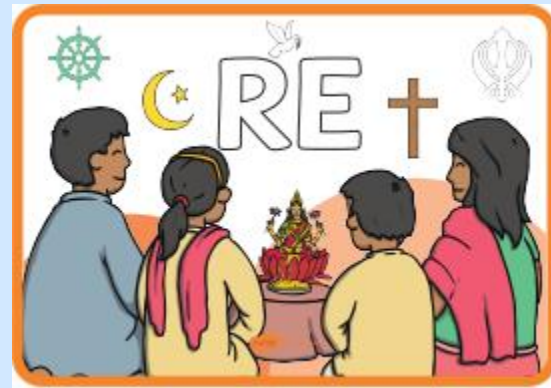
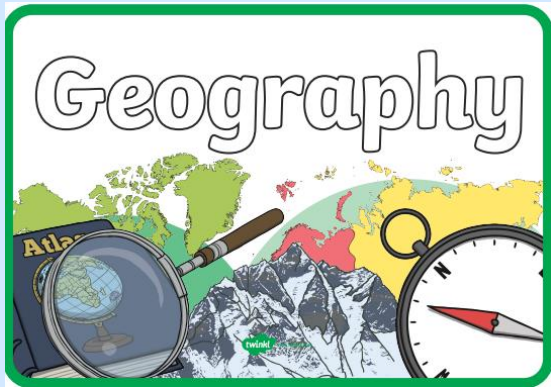
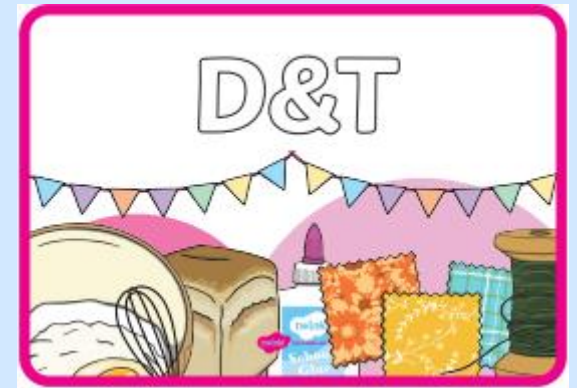
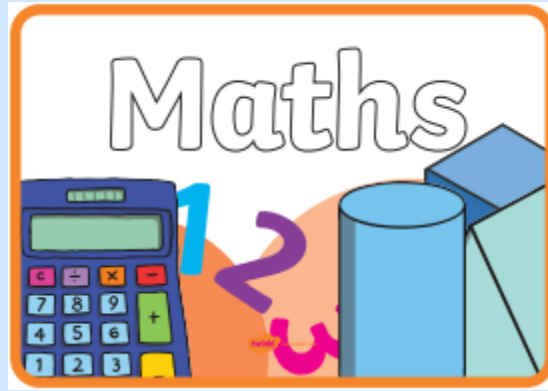


We use this topic to support teaching in all areas of the curriculum.

In this topic the children will:

- Discuss and explore human and physical features of local area and England (Geography).
- Observe and describe how seeds and bulbs grow into the plants. (**Science**).
- Design and create a greenhouse (**Design and Technology**).

These are the subjects that will be taught this half term.

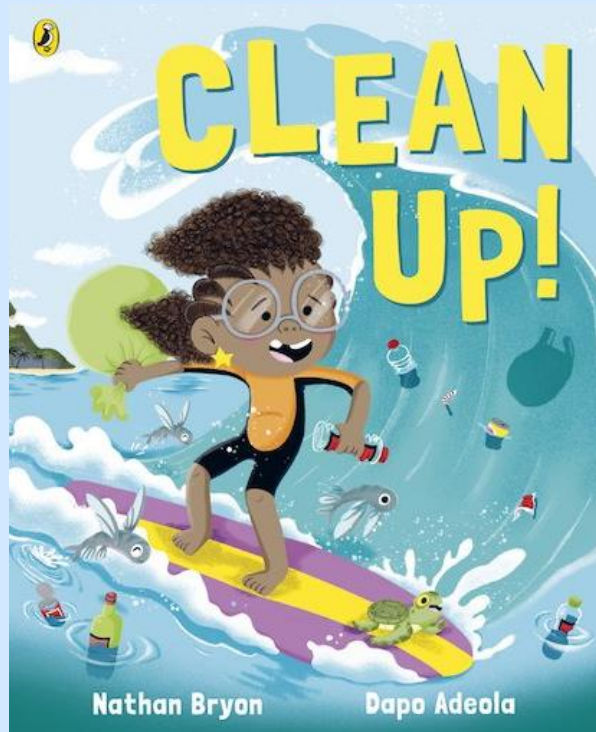


English



In English, the children will write a setting description based on our topic 'Sun, Sea and Sand'. They will apply the skills they have learnt throughout the year to describe a setting using the focus text 'Clean Up!'

Their writing will include adjectives, adverbs, verbs and senses and they will work on elements of a long narrative each week.



Phonics

Phonics re-take will commence on the week beginning **Monday 8th June – Friday 12th June.**

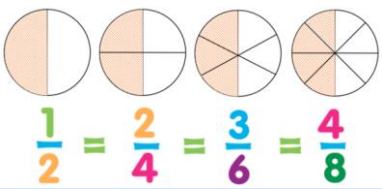
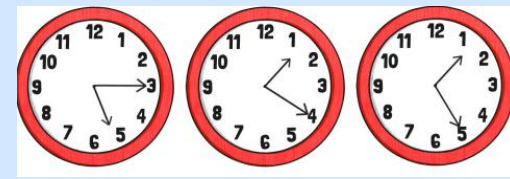
Please use this link to play phonic games with your child to help them identify and read real words and fake words (made up words).

[PhonicsPlay – Resources](#)



Maths

Fractions, Position and Direction and Time



In Maths they will learn:

Fraction:

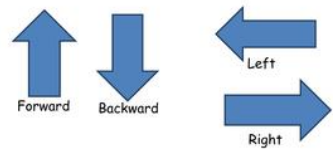
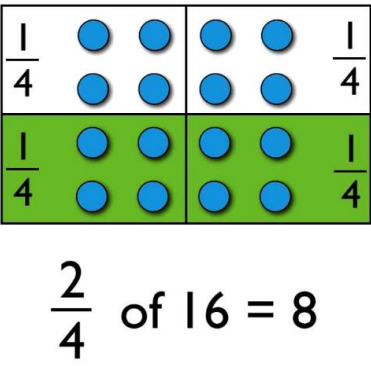
- Find quarters and thirds for amounts
- Find half, quarters and thirds for shapes
- Identify equivalent fraction

Position and Direction:

- Describe turns using positional and directional language

Time:

- Revisit telling and writing time for o'clock and half past the hour
- Learn to read and write time for quarter past and quarter to
- Telling time to 5 minute intervals
- Find and compare duration of time



Maths Vocabulary

Fraction: fraction half ($1/2$), quarter ($1/4$), third ($1/3$), whole, part, equal part, numerator, denominator, fraction bar, unit fraction, non-unit fraction, equivalent, three-quarters ($3/4$), equal, divided by (\div), odd, even, share, pattern

Position and Direction: quarter turn, half turn, three-quarter turn, whole turn, clockwise, anticlockwise, forwards, backwards left, right, up, down, turn, middle, position, pattern, above, below top, bottom, between, cube, cylinder, circle, semicircle, triangle, rectangle, square

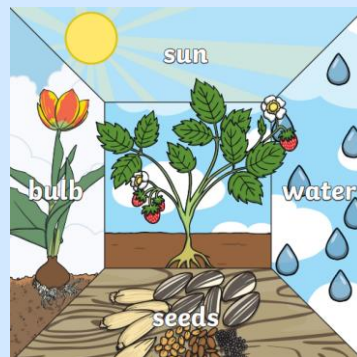
Time: hands, face, hour, minute, analogue, o'clock, past, to, half past, quarter past, quarter to, quarter of an hour, passed, 5, 10, 15, 20, 25, 30, 35, 40, 45, 50, 55, 60 time, 24 hours, day, daytime, night time, around the clock, am, pm midday, midnight, morning

Science

Plants

The children will explore, observe and describe how seeds and bulbs grow into mature plants. They will discuss that plants need water, light and a suitable temperature to grow and stay healthy.

The children will work scientifically by carrying out simple experiments in growing plants. They will observe closely to monitor the growth, the environment and record the results.



Geography

Human and Physical Features



- Discuss human and physical features in their local area / London
- Use Google Earth to explore the human and physical features of a contrasting non-European country
- Discuss similarities and differences between their local area/ London and a contrasting Non-European country
- Talk about how people can affect the local environment they live in



Design and Technology Greenhouse



This half term the children learn to:

- Understand what a green house is
- Discuss the purpose of a greenhouse
- Design the structure of a greenhouse thinking of its purpose
- Create a greenhouse for a real-life plant using a range of materials and linked to their design brief
- Evaluate their end product

This is linked to our Science topic - Plants





Physical Education (PE)

This half term the PE focus will be -

Athletics

Children will learn to:

- Further develop hand eye coordination, gross motor skills and aim
- Develop their understanding of sportsmanship and working as a team
- Recognise what success and failure is

They will take part in relay races, sprints, press pushes, throwing and jumping



Music

This half term the children will learn notations and beats.



INDONESIAN GAMELAN

- To look at the reasons why Gamelan music is played
- To explore different instruments in the orchestra and create using team work

They will focus on:

Singing, Call and response, Listening, Baris - Gong Kebyar of Peliatan, Composing ,Whole class orchestra creation, Creating rhythms and holding rhythm as a group.

Computing

We follow Kapow Program

In computing we will be learning about animation.

An animation is a series of still images shown in quick succession to give the appearance of a moving image; just like an optical illusion.

We will be creating flip books after that we will use these skills to create animation.

★

STAR WORDS



animation



flipbook

moving image



zoetrope

still image



frame

thaumatrope

Frame 1 Frame 2 Frame 3 Frame 4

Personal, Social, Health Education (PSHE)



This half term's PSHE topic is **Relationships**.

The children will learn to:

- Identify the different members of their family, understand their relationship with each of them and know why it is important to share and cooperate.
- Accept that everyone's family is different and understand that most people value their family.
- Understand that there are lots of forms of physical contact within a family and that some of this is acceptable and some is not.
- Know which types of physical contact they like and don't like and can talk about this.
- Identify some of the things that cause conflict with their friends.
- Understand that sometimes it is good to keep a secret and sometimes it is not good to keep a secret.
- Know how it feels to be asked to keep a secret they do not want to keep and know who to talk to about this.
- Recognise and appreciate people who can help them in their family, school and community.
- Express their appreciation for the people in my special relationships.



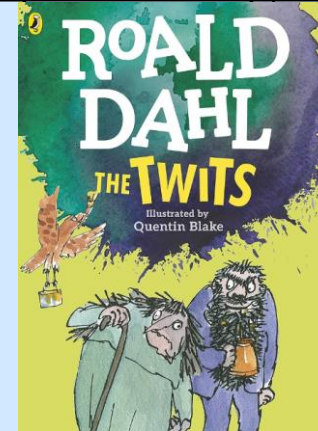
Reading

The children reads with an adult twice a week in a small group. They are taught to:

- Identify digraphs/trigraphs within words
- Read fluently
- Read with expression taking into account the punctuation
- The meaning of new unfamiliar words
- Answer questions using the text to help them
- Explain their answers
- Opportunities to review books

Daily story time at the end of the day

Weekly reading assembly



Friday morning reading with parents



Reading at home



Date	Book title and page number	Comments
04/ 09/25	The Great fire of London P: 12-14	

The children take their reading book home on Friday. They need to return their reading book to school on Monday.

- Adults should sit with their child and listen to them read each day.
- Then write the date, book title, number of pages and make a comment or sign in their record (it is great to read your comments on your child's reading).
- We will check their reading records once a week.

Other Information

Spellings

- Year 2 will bring home a list of spellings which they will learn
- On Tuesday the children will be tested on those spelling words.
- The teachers will keep a record of their test

Maths

- Every Monday the children will practise solving arithmetic test as a class and then take it home to practise
- They will discuss which methods they find easiest and how they can solve the calculations
- Children will retake the test on Friday for teacher record

Homework

On Friday the children will take home either **Maths, English** or the **Comprehension** homework book with specified page numbers. Their homework will relate to what they have been learning in class that week. Please encourage your child to complete the specified pages. You can find the answers in the book.



Questions or queries?

You can email your child's class teacher directly with any questions or query.

Lewis class: lewisclass@winterbourne-inf.croydon.sch.uk

Carroll class: carrollclass@winterbourne-inf.croydon.sch.uk

Andersen class: andersenclass@winterbourne-inf.croydon.sch.uk

Dahl class: dahlclass@winterbourne-inf.croydon.sch.uk